

Datasheet for ABIN363626
anti-EPB41L3 antibody (Internal Region)



[Go to Product page](#)

2 Images

Overview

Quantity:	0.1 mL
Target:	EPB41L3
Binding Specificity:	AA 400-500, Internal Region
Reactivity:	Human, Mouse, Rat, Xenopus laevis
Host:	Rabbit
Clonality:	Polyclonal
Application:	Western Blotting (WB)

Product Details

Immunogen:	Synthetic peptide made to an internal region of the human protein (within residues 400-500)
Specificity:	Reacts with human ~121 kDa DAL-1 protein
Cross-Reactivity:	Mouse (Murine), Rat (Rattus)
Cross-Reactivity (Details):	Cross reacts with mouse, rat and Xenopus proteins. Not tested in other species.
Purification:	Antigen affinity purified

Target Details

Target:	EPB41L3
Alternative Name:	Band 4.1-Like Protein 3 (EPB41L3 Products)
Pathways:	Cell-Cell Junction Organization , Maintenance of Protein Location

Application Details

Application Notes: Working dilution: Optimal dilution should be determined by the end user.
The following are guidelines only:
- WB : 2 µg/mL

Restrictions: For Research Use only

Handling

Format: Liquid

Concentration: 1.15 mg/mL

Buffer: PBS, glycerol 30 % , Sodium azide 0.1 %

Preservative: Sodium azide

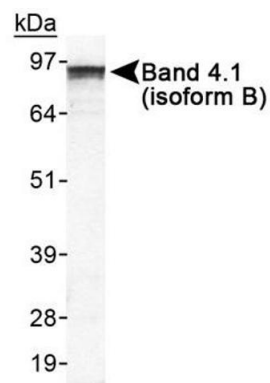
Precaution of Use: This product contains Sodium azide: a POISONOUS AND HAZARDOUS SUBSTANCE which should be handled by trained staff only.

Storage: 4 °C/-20 °C

Storage Comment: Short term storage at +4°C. For extended periods store in aliquots at -20°C. Antibodies are guaranteed for 6 month from date of receipt.

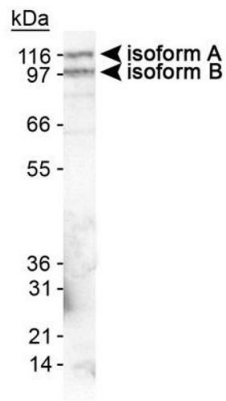
Expiry Date: 6 months

Images



Detection of Band 4.1 in HeLa whole cell lysate using pab50317

Image 1.



Detection of Band 4.1 in mouse brain lysate using pab50317

Image 2.