

Datasheet for ABIN363627
anti-LPO antibody (AA 300-400)



[Go to Product page](#)

1 Image

Overview

Quantity:	0.1 mL
Target:	LPO
Binding Specificity:	AA 300-400
Reactivity:	Cow, Human, Monkey
Host:	Rabbit
Clonality:	Polyclonal
Conjugate:	This LPO antibody is un-conjugated
Application:	Western Blotting (WB)

Product Details

Immunogen:	Synthetic peptide made to an internal portion of the human protein (within residues 300-400)
Specificity:	Reacts with human Lactoperoxidase
Cross-Reactivity:	Mouse (Murine), Cow (Bovine), Sheep (Ovine), Rat (Rattus)
Cross-Reactivity (Details):	Cross reacts with proteins from monkey and bovine. May cross reacts with sheep (81 % sequence homology), mouse and rat protein (73 %). Not tested in other species.
Purification:	Antigen affinity purified

Target Details

Target:	LPO
Alternative Name:	Lactoperoxidase (LPO Products)

Application Details

Application Notes: Working dilution: Optimal dilution should be determined by the end user.
The following are guidelines only:
- WB : 0.5 to 2 µg/mL

Restrictions: For Research Use only

Handling

Format: Liquid

Concentration: 1.7 mg/mL

Buffer: PBS, glycerol 30 % , Sodium azide 0.1 %

Preservative: Sodium azide

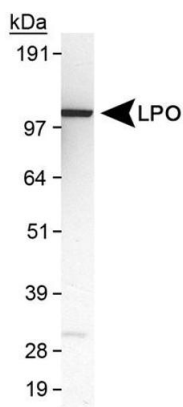
Precaution of Use: This product contains Sodium azide: a POISONOUS AND HAZARDOUS SUBSTANCE which should be handled by trained staff only.

Storage: 4 °C/-20 °C

Storage Comment: Short term storage at +4°C. For extended periods store in aliquots at -20°C. Antibodies are guaranteed for 6 month from date of receipt.

Expiry Date: 6 months

Images



Detection of LPO in MDA-MB231 cell lysate using pab50318

Image 1.