



[Go to Product page](#)

Datasheet for ABIN363628  
**anti-LPO antibody (C-Term)**

1 Image

### Overview

Quantity:	0.1 mL
Target:	LPO
Binding Specificity:	AA 650-712, C-Term
Reactivity:	Cow, Human, Mouse, Goat, Sheep
Host:	Rabbit
Clonality:	Polyclonal
Application:	Western Blotting (WB)

### Product Details

Immunogen:	Synthetic peptide made to a C-terminal portion of the human protein (within residues 650-712)
Specificity:	Reacts with human Lactoperoxidase
Cross-Reactivity:	Mouse (Murine), Cow (Bovine), Sheep (Ovine)
Cross-Reactivity (Details):	Cross reacts with proteins from mouse, hamster, sheep, bovine and goat. Not tested in other species.
Purification:	Antigen affinity purified

### Target Details

Target:	LPO
Alternative Name:	Lactoperoxidase ( <a href="#">LPO Products</a> )

## Application Details

Application Notes: Working dilution: Optimal dilution should be determined by the end user.  
The following are guidelines only:  
- WB : 0.5 to 2 µg/mL

Restrictions: For Research Use only

## Handling

Format: Liquid

Concentration: 1.5 mg/mL

Buffer: PBS, glycerol 30 % , Sodium azide 0.1 %

Preservative: Sodium azide

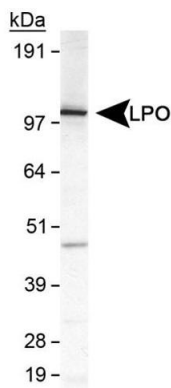
Precaution of Use: This product contains Sodium azide: a POISONOUS AND HAZARDOUS SUBSTANCE which should be handled by trained staff only.

Storage: 4 °C/-20 °C

Storage Comment: Short term storage at +4°C. For extended periods store in aliquots at -20°C. Antibodies are guaranteed for 6 month from date of receipt.

Expiry Date: 6 months

## Images



Detection of LPO in MDA-MB231 cell lysate using pab50319

Image 1.