

Datasheet for ABIN363653
anti-BHLHE40 antibody (C-Term)



[Go to Product page](#)

2 Images

Overview

Quantity:	0.1 mL
Target:	BHLHE40
Binding Specificity:	C-Term
Reactivity:	Human
Host:	Rabbit
Clonality:	Polyclonal
Conjugate:	This BHLHE40 antibody is un-conjugated
Application:	Western Blotting (WB), Immunoprecipitation (IP)

Product Details

Immunogen:	The epitope recognized by this antibody maps to a region between residues 350 and the Cter domain (residue 412) of human differentially expressed in chondrocytes
Specificity:	Reacts with human DEC1
Cross-Reactivity (Details):	Not tested in other species.
Purification:	Antigen affinity purified

Target Details

Target:	BHLHE40
Alternative Name:	Class E Basic Helix-Loop-Helix Protein 40 (bHLHe40) (BHLHE40 Products)
Pathways:	Photoperiodism

Application Details

Application Notes: Working dilution: Optimal dilution should be determined by the end user.
The following are guidelines only:
- IP : 1 to 4 µg/mL of lysate - WB : 1/5 000 to 1/15 000

Restrictions: For Research Use only

Handling

Format: Liquid

Concentration: 1 mg/mL

Buffer: Tris-citrate, phosphate, (pH 7-8) buffer, Sodium azide 0.09 %

Preservative: Sodium azide

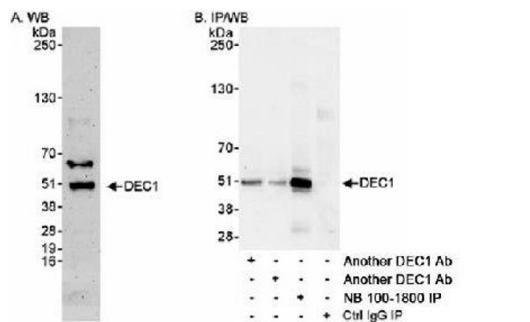
Precaution of Use: This product contains Sodium azide: a POISONOUS AND HAZARDOUS SUBSTANCE which should be handled by trained staff only.

Storage: 4 °C/-20 °C

Storage Comment: Short term storage at +4°C. For extended periods store in aliquots at -20°C. Antibodies are guaranteed for 6 month from date of receipt.

Expiry Date: 6 months

Images



Detection of Human DEC1 by Western Blot and Immunoprecipitation

Samples: Whole cell lysate from HeLa (50 mcg for WB) and 293T (1 mg/IP, 20% of IP loaded) cells. Antibodies: Affinity purified rabbit anti-DEC1 antibody pab50344 used for WB at 0,1 mcg/ml (A) and 1 mcg/ml (B) and for IP at 3 mcg/mg lysate. DEC1 was also immunoprecipitated using 2 other rabbit anti-DEC1 antibodies, which recognize upstream epitopes.

Detection: Chemiluminescence with exposure times of 3 minutes (A) and 30 seconds (B).

Image 1.

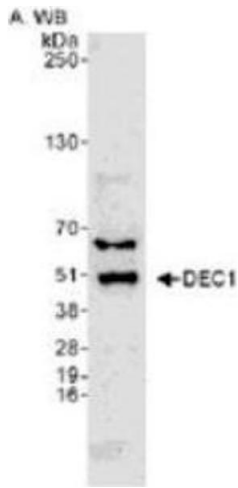


Image 2.