

Datasheet for ABIN363664
anti-AGR2 antibody (AA 50-100)



[Go to Product page](#)

3 Images

Overview

Quantity:	0.1 mL
Target:	AGR2
Binding Specificity:	AA 50-100
Reactivity:	Human, Mouse, Cow
Host:	Rabbit
Clonality:	Polyclonal
Application:	Immunohistochemistry (Paraffin-embedded Sections) (IHC (p))

Product Details

Immunogen:	Synthetic peptide made to an internal portion of the human protein (within residues 50-100)
Specificity:	Reacts with human and mouse 20 kDa AG-2 protein
Cross-Reactivity:	Cow (Bovine)
Cross-Reactivity (Details):	Cross reacts with protein from bovine due to sequence homology
Purification:	Antigen affinity purified

Target Details

Target:	AGR2
Alternative Name:	Anterior Gradient Protein 2 Homolog (AG-2) (AGR2 Products)
Background:	Required for MUC2 post-transcriptional synthesis and secretion. May play a role in the production of mucus by intestinal cells By similarity. Proto-oncogene that may play a role in cell

Target Details

migration, cell differentiation and cell growth.

Application Details

Application Notes: Working dilution: Optimal dilution should be determined by the end user.
The following are guidelines only:
- IHC - P : 1/100

Restrictions: For Research Use only

Handling

Format: Liquid

Concentration: 1 mg/mL

Buffer: PBS, glycerol 30 % , Sodium azide 0.1 %

Preservative: Sodium azide

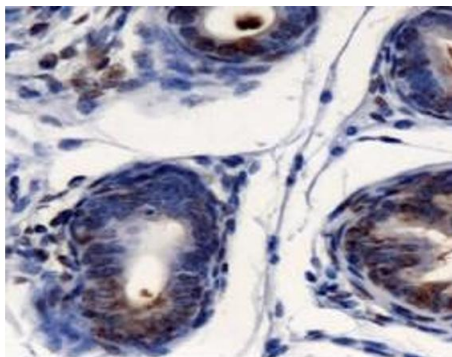
Precaution of Use: This product contains Sodium azide: a POISONOUS AND HAZARDOUS SUBSTANCE which should be handled by trained staff only.

Storage: 4 °C/-20 °C

Storage Comment: Short term storage at +4°C. For extended periods store in aliquots at -20°C. Antibodies are guaranteed for 6 month from date of receipt.

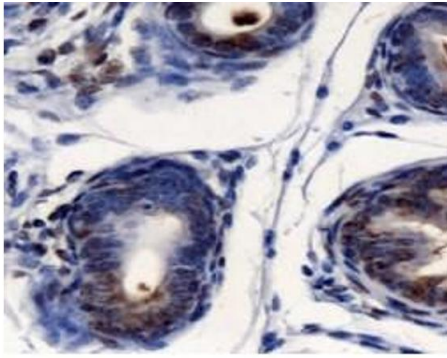
Expiry Date: 6 months

Images

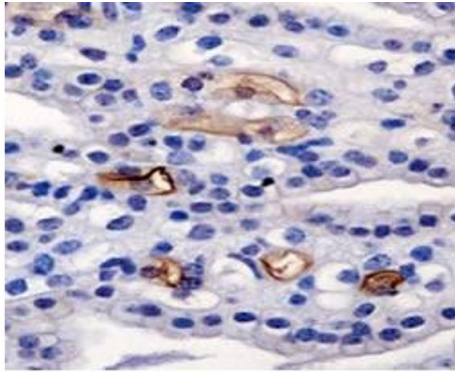


Detection of AGR2 in mouse prostate using pab50355

Image 1.



Detection of AGR2 in mouse prostate using pab50355



Detection of AGR2 in mouse kidney using pab50355

Image 2.

Image 3.