



[Go to Product page](#)

Datasheet for ABIN363665  
**anti-AGR2 antibody (N-Term)**

3 Images

### Overview

Quantity:	0.1 mL
Target:	AGR2
Binding Specificity:	AA 1-50, N-Term
Reactivity:	Human, Mouse, Cow
Host:	Rabbit
Clonality:	Polyclonal
Application:	Immunohistochemistry (Paraffin-embedded Sections) (IHC (p))

### Product Details

Immunogen:	Synthetic peptide derived from N-term domain of the mouse AGR2 protein (within residues 1-50).
Specificity:	Reacts with human and mouse 20 kDa AG-2 protein
Cross-Reactivity:	Cow (Bovine)
Cross-Reactivity (Details):	Cross reacts with protein from bovine due to sequence homology
Purification:	Antigen affinity purified

### Target Details

Target:	AGR2
Alternative Name:	Anterior Gradient Protein 2 Homolog (AG-2) ( <a href="#">AGR2 Products</a> )

## Application Details

---

Application Notes: Working dilution: Optimal dilution should be determined by the end user.  
The following are guidelines only :  
- IHC - P : 1/100

---

Restrictions: For Research Use only

---

## Handling

---

Format: Liquid

---

Concentration: 1 mg/mL

---

Buffer: PBS, glycerol 30 % , Sodium azide 0.1 %

---

Preservative: Sodium azide

---

Precaution of Use: This product contains Sodium azide: a POISONOUS AND HAZARDOUS SUBSTANCE which should be handled by trained staff only.

---

Storage: 4 °C/-20 °C

---

Storage Comment: Short term storage at +4°C. For extended periods store in aliquots at -20°C. Antibodies are guaranteed for 6 month from date of receipt.

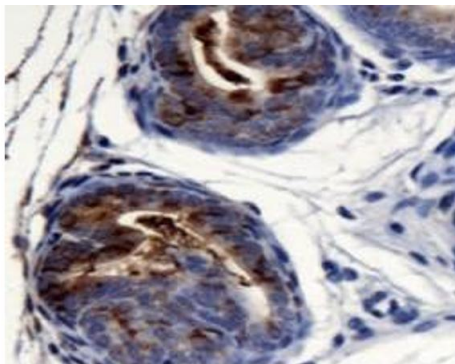
---

Expiry Date: 6 months

---

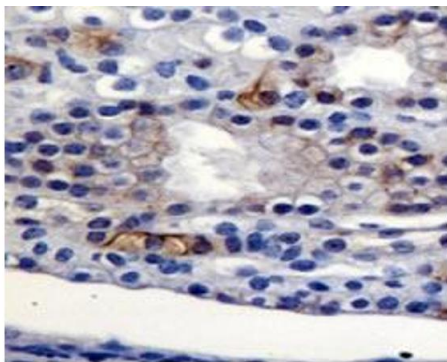
## Validation report #029594 for ELISA (ELISA)

---

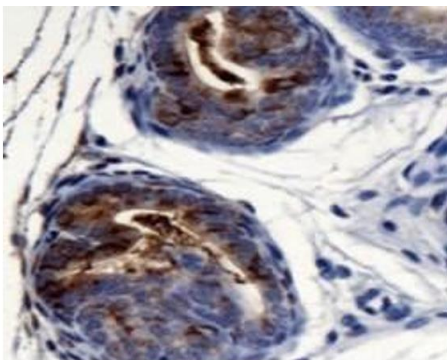


**Detection of AGR2 in mouse prostate using pab50356**

**Image 1.**



**Detection of AGR2 in mouse kidney using pab50356**



**Detection of AGR2 in mouse prostate using pab50356**

**Image 2.**

**Image 3.**