

Datasheet for ABIN363666  
**anti-SLC31A2 antibody (AA 50-100)**



[Go to Product page](#)

1 Image

## Overview

Quantity:	0.1 mL
Target:	SLC31A2
Binding Specificity:	AA 50-100
Reactivity:	Human, Mouse
Host:	Rabbit
Clonality:	Polyclonal
Application:	Western Blotting (WB)

## Product Details

Immunogen:	Synthetic peptide made to an internal portion of the human protein (within residues 50-100)
Specificity:	Reacts with human SLC31A2 protein
Cross-Reactivity:	Mouse (Murine)
Cross-Reactivity (Details):	Cross reacts with mouse protein.
Purification:	Antigen affinity purified

## Target Details

Target:	SLC31A2
Alternative Name:	Probable Low Affinity Copper Uptake Protein 2 ( <a href="#">SLC31A2 Products</a> )

## Application Details

Application Notes:	Working dilution: Optimal dilution should be determined by the end user. The following are guidelines only : - WB : 1 µg/mL
Restrictions:	For Research Use only

## Handling

Format:	Liquid
Concentration:	1.13 mg/mL
Buffer:	PBS, glycerol 30 % , Sodium azide 0.1 %
Preservative:	Sodium azide
Precaution of Use:	This product contains Sodium azide: a POISONOUS AND HAZARDOUS SUBSTANCE which should be handled by trained staff only.
Storage:	4 °C/-20 °C
Storage Comment:	Short term storage at +4°C. For extended periods store in aliquots at -20°C. Antibodies are guaranteed for 6 month from date of receipt.
Expiry Date:	6 months

## Images

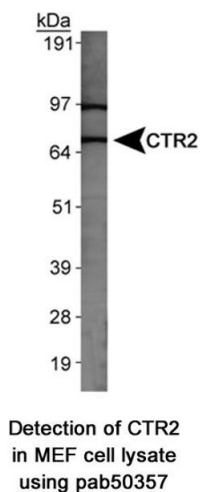


Image 1.