

Datasheet for ABIN363669  
**anti-SLC2A9 antibody (AA 400-450)**



[Go to Product page](#)

1 Image

## Overview

Quantity:	0.1 mL
Target:	SLC2A9
Binding Specificity:	AA 400-450
Reactivity:	Mouse
Host:	Rabbit
Clonality:	Polyclonal
Application:	Western Blotting (WB)

## Product Details

Immunogen:	Synthetic peptide made to an internal portion of the mouse protein (within residues 400-450)
Specificity:	Reacts with mouse GLUT9
Cross-Reactivity (Details):	Weakly cross reacts with human protein.
Purification:	Antigen affinity purified

## Target Details

Target:	SLC2A9
Alternative Name:	Glucose Transporter Type 9 (GLUT9) ( <a href="#">SLC2A9 Products</a> )

## Application Details

Application Notes:	Working dilution: Optimal dilution should be determined by the end user.
--------------------	--

Application Details

	The following are guidelines only: - WB : 0.5 µg/mL
Restrictions:	For Research Use only

Handling

Format:	Liquid
Concentration:	1 mg/mL
Buffer:	Tris-glycine, NaCl 150 mM buffer, Sodium azide 0.05 %
Preservative:	Sodium azide
Precaution of Use:	This product contains Sodium azide: a POISONOUS AND HAZARDOUS SUBSTANCE which should be handled by trained staff only.
Storage:	4 °C/-20 °C
Storage Comment:	Short term storage at +4°C. For extended periods store in aliquots at -20°C. Antibodies are guaranteed for 6 month from date of receipt.
Expiry Date:	6 months

Images

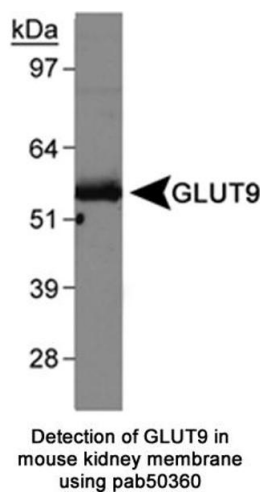


Image 1.