

Datasheet for ABIN364230
anti-S100A8 antibody (FITC)



[Go to Product page](#)

2 Images

Overview

Quantity:	50 µg
Target:	S100A8
Reactivity:	Human
Host:	Mouse
Clonality:	Monoclonal
Conjugate:	This S100A8 antibody is conjugated to FITC
Application:	Western Blotting (WB), Immunohistochemistry (IHC), Immunofluorescence (IF), Flow Cytometry (FACS), Immunohistochemistry (Paraffin-embedded Sections) (IHC (p))

Product Details

Brand:	IHC-plus™
Immunogen:	Purified granulocyte antigen of human origin.
Clone:	CF-145
Isotype:	IgG2b
Specificity:	Anti-Human Calgranulin A monoclonal antibody reacts with the human Calgranulin A protein. Calgranulin A, also known as MRP-8 and S 100A8 is a member of the S 100 family of proteins containing 2 EF hand (alpha helix, turn, alpha helix structure) calcium bi.
Purification:	Protein G purified

Target Details

Target:	S100A8
---------	--------

Target Details

Alternative Name:	S100A8 / MRP8 (S100A8 Products)
Background:	<p>Name/Gene ID: S100A8</p> <p>Synonyms: S100A8, 60B8AG, CFAG, CAGA, Calgranulin A, Calgranulin-A, Calprotectin L1L subunit, Cystic fibrosis antigen, CGLA, L1Ag, NIF, p8, Protein S100-A8, MRP8, Urinary stone protein band A, CP-10, MA387, MRP-8</p>
Gene ID:	6279
UniProt:	P05109
Pathways:	Transition Metal Ion Homeostasis , Positive Regulation of Endopeptidase Activity , S100 Proteins

Application Details

Application Notes:	<p>Approved: Flo (0.5 µg/10 x10⁶), IF, IHC, IHC-P (1:50), WB</p> <p>Usage: Immunohistochemistry: This antibody was validated for use in immunohistochemistry on a panel of 21 formalin-fixed, paraffin-embedded (FFPE) human tissues after heat induced antigen retrieval in pH 6.0 citrate buffer. After incubation with the primary antibody, slides were incubated with biotinylated secondary antibody, followed by alkaline phosphatase-streptavidin and chromogen. The stained slides were evaluated by a pathologist to confirm staining specificity. The optimal working concentration for this antibody was determined to be 1:50. The applications listed have been tested for the unconjugated form of this product. Other forms have not been tested.</p>
Comment:	Target Species of Antibody: Human
Restrictions:	For Research Use only

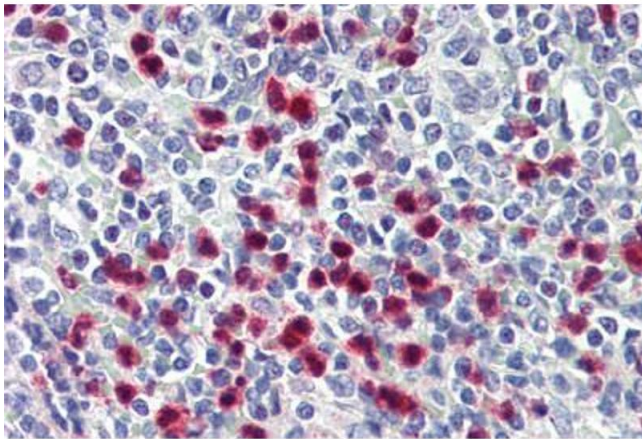
Handling

Format:	Liquid
Concentration:	Lot specific
Buffer:	PBS, 0.02 % sodium azide, EIA grade BSA.
Preservative:	Sodium azide
Precaution of Use:	This product contains Sodium azide: a POISONOUS AND HAZARDOUS SUBSTANCE which should be handled by trained staff only.

Handling

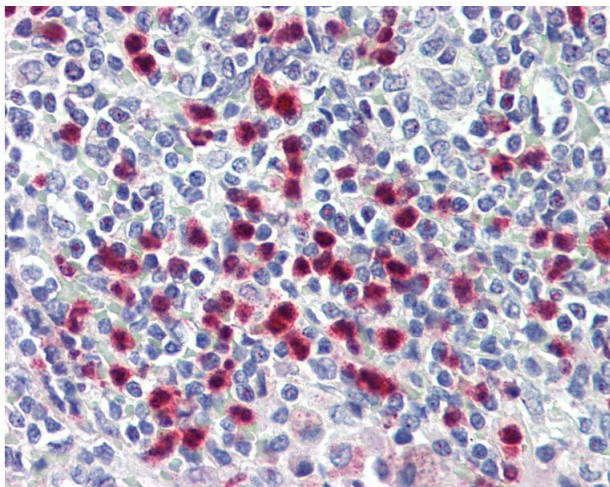
Handling Advice:	Avoid repeated freezing and thawing.
Storage:	4 °C,-20 °C
Storage Comment:	Short term: store at 4°C. Long term: -20°C. Avoid freeze-thaw cycles. Protect from light.

Images



Immunohistochemistry (Paraffin-embedded Sections)

Image 1. Human Spleen (formalin-fixed, paraffin-embedded) stained with S100A8 antibody ABIN364230 at 1:50 followed by biotinylated anti-mouse IgG secondary antibody ABIN481714, alkaline phosphatase-streptavidin and chromogen.



Immunohistochemistry

Image 2. Anti-S100A8 antibody IHC of human spleen. Immunohistochemistry of formalin-fixed, paraffin-embedded tissue after heat-induced antigen retrieval. Antibody dilution 1:50. This image was taken for the unconjugated form of this product. Other forms have ...