

Datasheet for ABIN364233  
**anti-TLR9 antibody (AA 268-284) (FITC)**



[Go to Product page](#)

2 Images

## Overview

Quantity:	50 µg
Target:	TLR9
Binding Specificity:	AA 268-284
Reactivity:	Human, Mouse, Rat, Dog, Monkey, Horse
Host:	Mouse
Clonality:	Monoclonal
Conjugate:	This TLR9 antibody is conjugated to FITC
Application:	Western Blotting (WB), Immunohistochemistry (IHC), Flow Cytometry (FACS), Immunohistochemistry (Paraffin-embedded Sections) (IHC (p)), Immunocytochemistry (ICC), Immunohistochemistry (Frozen Sections) (IHC (fro))

## Product Details

Brand:	IHC-plus™
Immunogen:	Synthetic peptide corresponding to aa 268-284 in the cytoplasmic portion of human TLR9 (Toll-like Receptor 9).  Type of Immunogen: Synthetic peptide
Isotype:	IgG1
Specificity:	Recognizes human TLR9. Detects a band of ~120kD by Western blot, may also detect a smaller band of TLR9 isoform B.
Purification:	Protein G purified

## Target Details

---

Target:	TLR9
Alternative Name:	TLR9 ( <a href="#">TLR9 Products</a> )
Background:	Name/Gene ID: TLR9 Family: Toll-like Receptor  Synonyms: TLR9, CD289, CD289 antigen, Scri2a, Toll-like receptor 9
Gene ID:	54106
UniProt:	<a href="#">Q9NR96</a>
Pathways:	<a href="#">TLR Signaling</a> , <a href="#">Activation of Innate immune Response</a> , <a href="#">Cellular Response to Molecule of Bacterial Origin</a> , <a href="#">Toll-Like Receptors Cascades</a>

## Application Details

---

Application Notes:	Approved: Flo, ICC, IHC, IHC-Fr (10 - 20 µg/mL), IHC-P (5 - 10 µg/mL), WB (1 - 3 µg/mL)  Usage: Immunohistochemistry: This antibody was validated for use in immunohistochemistry on a panel of 21 formalin-fixed, paraffin-embedded (FFPE) human tissues after heat induced antigen retrieval in pH 6.0 citrate buffer. After incubation with the primary antibody, slides were incubated with biotinylated secondary antibody, followed by alkaline phosphatase-streptavidin and chromogen. The stained slides were evaluated by a pathologist to confirm staining specificity. The optimal working concentration for this antibody was determined to be 5-10 µg/mL. Flow Cytometry (Intracellular): 0.1-2 µg/10 <sup>6</sup> cells, cell surface. The applications listed have been tested for the unconjugated form of this product. Other forms have not been tested.
Comment:	Target Species of Antibody: Human
Restrictions:	For Research Use only

## Handling

---

Format:	Liquid
Concentration:	Lot specific
Buffer:	10 mM Tris, 150 mM sodium chloride, 0.05 % sodium azide.
Preservative:	Sodium azide
Precaution of Use:	This product contains Sodium azide: a POISONOUS AND HAZARDOUS SUBSTANCE which

## Handling

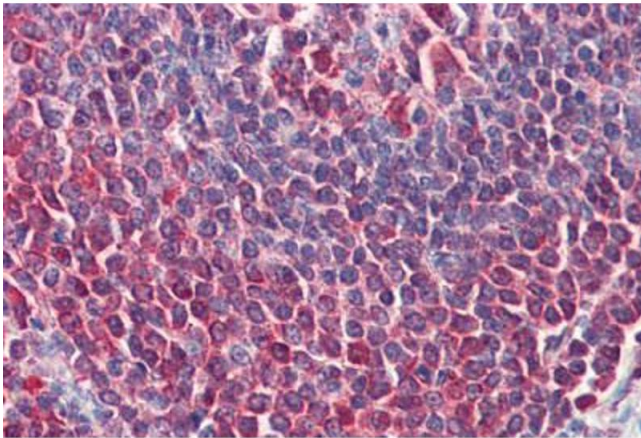
should be handled by trained staff only.

Handling Advice: avoid freeze thaw cycles. Sensitive to light.

Storage: 4 °C, -20 °C

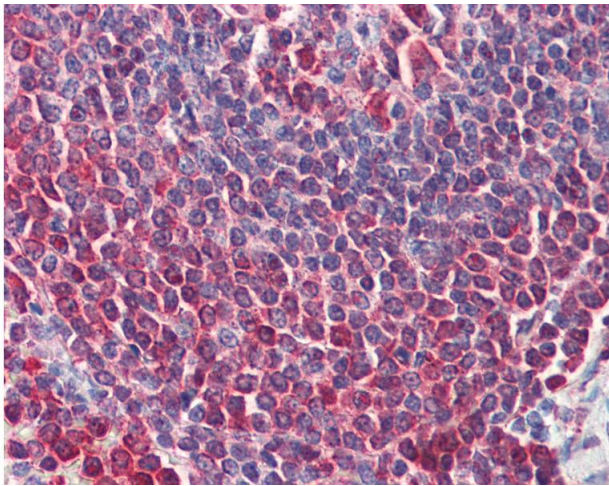
Storage Comment: Short term: store at 4°C. Long term: aliquot and store -20°C. Avoid freeze-thaw cycles. Protect from light.

## Images



### Immunohistochemistry (Paraffin-embedded Sections)

**Image 1.** Human Spleen (formalin-fixed, paraffin-embedded) stained with TLR9 antibody ABIN364233 at 5-10 ug/ml followed by biotinylated anti-mouse IgG secondary antibody ABIN481714, alkaline phosphatase-streptavidin and chromogen.



### Immunohistochemistry

**Image 2.** Anti-TLR9 antibody IHC of human spleen. Immunohistochemistry of formalin-fixed, paraffin-embedded tissue after heat-induced antigen retrieval. Antibody concentration 10 ug/ml. This image was taken for the unconjugated form of this product. Other form ...