



[Go to Product page](#)

Datasheet for ABIN364242

## anti-C1S antibody

### 2 Images

#### Overview

Quantity:	50 µg
Target:	C1S
Reactivity:	Human
Host:	Goat
Clonality:	Polyclonal
Application:	Immunohistochemistry (IHC), ELISA, Immunohistochemistry (Paraffin-embedded Sections) (IHC (p))

#### Product Details

Brand:	IHC-plus™
Immunogen:	Complement component 1 subunit (C1s) purified from human plasma. Type of Immunogen: Purified protein
Isotype:	IgG
Specificity:	Recognizes human C1s.
Purification:	Immunoaffinity purified

#### Target Details

Target:	C1S
Alternative Name:	Complement C1s ( <a href="#">C1S Products</a> )
Background:	Name/Gene ID: C1S

## Target Details

---

Subfamily: Serine S1

Family: Protease

Synonyms: C1S, C1 esterase, ComplementC1S, Complement 1s, Complement C1s subcomponent

Gene ID: 716

UniProt: [P09871](#)

Pathways: [Complement System](#)

## Application Details

---

Application Notes: Approved: ELISA, IHC, IHC-P (5 µg/mL)

Usage: Immunohistochemistry: This antibody was validated for use in immunohistochemistry on a panel of 21 formalin-fixed, paraffin-embedded (FFPE) human tissues after heat induced antigen retrieval in pH 6.0 citrate buffer. After incubation with the primary antibody, slides were incubated with biotinylated secondary antibody, followed by alkaline phosphatase-streptavidin and chromogen. The stained slides were evaluated by a pathologist to confirm staining specificity. The optimal working concentration for this antibody was determined to be 5 µg/mL.

Comment: Target Species of Antibody: Human

Restrictions: For Research Use only

## Handling

---

Format: Liquid

Concentration: Lot specific

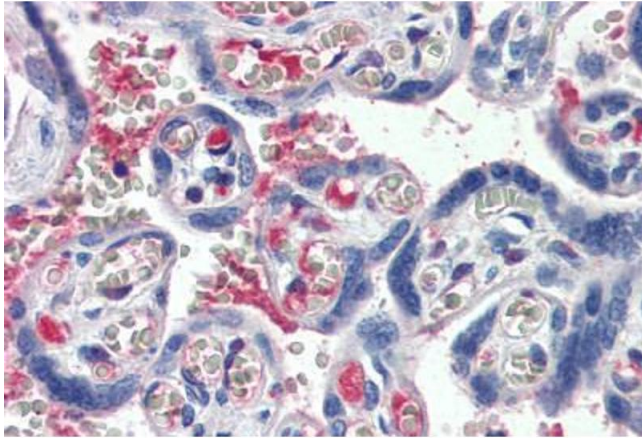
Buffer: 10 mM HEPES, pH 7.4, 0.15 M sodium chloride, 50 % glycerol. No preservative added.

Preservative: Without preservative

Handling Advice: Avoid repeat freeze-thaw cycles.

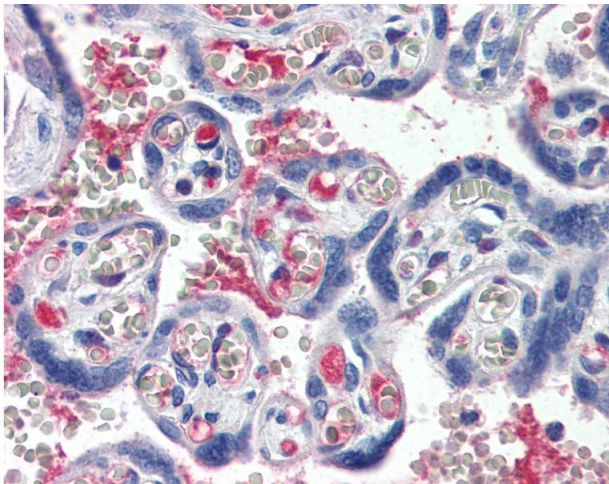
Storage: 4 °C, -20 °C

Storage Comment: Short term: 4°C. Long term: Store at -20°C. Avoid freeze-thaw cycles.



#### Immunohistochemistry (Paraffin-embedded Sections)

**Image 1.** Human Placenta (formalin-fixed, paraffin-embedded) stained with C1S antibody ABIN364242 at 5 ug/ml followed by biotinylated anti-goat IgG secondary antibody ABIN481715, alkaline phosphatase-streptavidin and chromogen.



#### Immunohistochemistry

**Image 2.** Anti-C1S / Complement C1s antibody IHC staining of human placenta. Immunohistochemistry of formalin-fixed, paraffin-embedded tissue after heat-induced antigen retrieval. Antibody concentration 5 ug/ml.