

Datasheet for ABIN364250
anti-KDM4C antibody (AA 475-525)[Go to Product page](#)

2 Images

Overview

Quantity:	50 µL
Target:	KDM4C
Binding Specificity:	AA 475-525
Reactivity:	Human
Host:	Rabbit
Clonality:	Polyclonal
Application:	Western Blotting (WB), Immunohistochemistry (IHC), Immunohistochemistry (Paraffin-embedded Sections) (IHC (p))

Product Details

Brand:	IHC-plus™
Immunogen:	The epitope recognized maps to a region between residue 475 and 525 of human Jumonji Domain Containing 2C using the numbering given in entry NP_055876.2 (GeneID 23081). Type of Immunogen: Synthetic peptide
Specificity:	This antibody is specific to the JMJD2C protein. Species cross-reactivity: Human. Other species not yet tested.
Purification:	Immunoaffinity purified

Target Details

Target:	KDM4C
---------	-------

Target Details

Alternative Name:	KDM4C / JMJD2C (KDM4C Products)
Background:	Name/Gene ID: KDM4C Synonyms: KDM4C, BA146B14.1, GASC-1 protein, GASC1, Jumonji domain containing 2C, JMJD2C, JHDM3C, KIAA0780, Lysine-specific demethylase 4C
Gene ID:	23081
NCBI Accession:	NP_055876
UniProt:	Q9H3R0
Pathways:	Nuclear Hormone Receptor Binding , Warburg Effect

Application Details

Application Notes:	Approved: IHC, IHC-P (5 µg/mL), WB Usage: Immunohistochemistry: This antibody was validated for use in immunohistochemistry on a panel of 21 formalin-fixed, paraffin-embedded (FFPE) human tissues after heat induced antigen retrieval in pH 6.0 citrate buffer. After incubation with the primary antibody, slides were incubated with biotinylated secondary antibody, followed by alkaline phosphatase-streptavidin and chromogen. The stained slides were evaluated by a pathologist to confirm staining specificity. The optimal working concentration for this antibody was determined to be 5 µg/mL. Positive control: HeLa whole cell extract.
Comment:	Target Species of Antibody: Human
Restrictions:	For Research Use only

Handling

Format:	Liquid
Concentration:	Lot specific
Buffer:	Tris-citrate/phosphate buffer, pH 7.5, 0.09 % sodium azide.
Preservative:	Sodium azide
Precaution of Use:	This product contains Sodium azide: a POISONOUS AND HAZARDOUS SUBSTANCE which should be handled by trained staff only.
Handling Advice:	Avoid repeated freezing and thawing.

Handling

Storage: 4 °C

Storage Comment: 4°C, avoid freezing.

Images

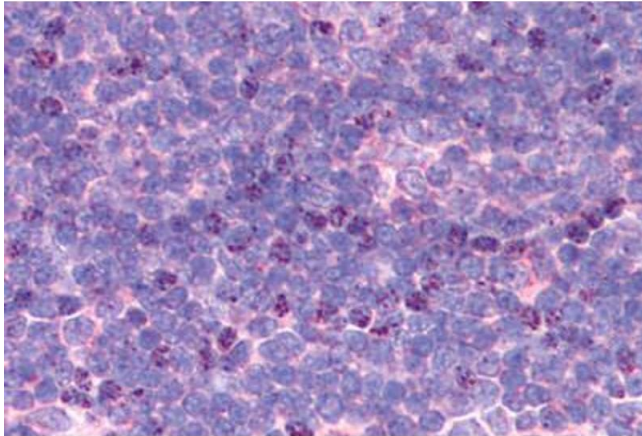
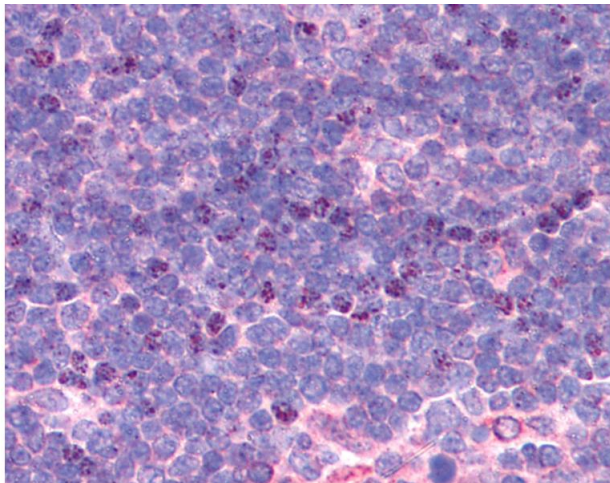


Image 1. Thymus



Immunohistochemistry

Image 2. Anti-JMJD2C antibody IHC of human thymus. Immunohistochemistry of formalin-fixed, paraffin-embedded tissue after heat-induced antigen retrieval. Antibody concentration 5 ug/ml.