

Datasheet for ABIN364262

**anti-ERCC4 antibody****2** Images[Go to Product page](#)

## Overview

Quantity:	50 µL
Target:	ERCC4
Reactivity:	Human
Host:	Mouse
Clonality:	Monoclonal
Application:	Western Blotting (WB), Immunohistochemistry (IHC), Immunohistochemistry (Paraffin-embedded Sections) (IHC (p))

## Product Details

Brand:	IHC-plus™
Immunogen:	Recombinant human XPF protein. Type of Immunogen: Recombinant protein
Isotype:	IgG2 kappa
Specificity:	Recognizes XPF. Species cross-reactivity: human.
Purification:	Protein G purified

## Target Details

Target:	ERCC4
Alternative Name:	ERCC4 / XPF ( <a href="#">ERCC4 Products</a> )
Background:	Name/Gene ID: ERCC4

## Target Details

Synonyms: ERCC4, ERCC11, DNA repair endonuclease XPF, XPF

Gene ID: 2072

UniProt: [Q92889](#)

Pathways: [DNA Damage Repair](#)

## Application Details

Application Notes: Approved: IHC, IHC-P (10 µg/mL), WB (1 - 2 µg/mL)

Usage: Immunohistochemistry: This antibody was validated for use in immunohistochemistry on a panel of 21 formalin-fixed, paraffin-embedded (FFPE) human tissues after heat induced antigen retrieval in pH 6.0 citrate buffer. After incubation with the primary antibody, slides were incubated with biotinylated secondary antibody, followed by alkaline phosphatase-streptavidin and chromogen. The stained slides were evaluated by a pathologist to confirm staining specificity. The optimal working concentration for this antibody was determined to be 10 µg/mL. Western Blot: 1-2 µg/mL for 2hrs at RT. Positive control: MCF-7 cells or human tonsil.

Comment: Target Species of Antibody: Human

Restrictions: For Research Use only

## Handling

Format: Liquid

Concentration: Lot specific

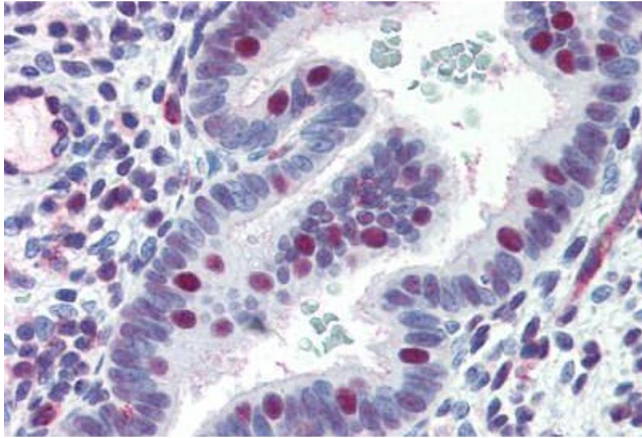
Buffer: PBS, pH 7.4, 0.2 % BSA, 0.09 % sodium azide.

Preservative: Sodium azide

Precaution of Use: This product contains Sodium azide: a POISONOUS AND HAZARDOUS SUBSTANCE which should be handled by trained staff only.

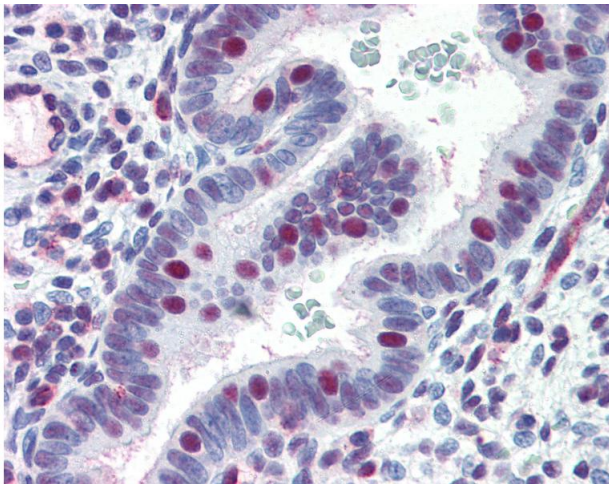
Storage: 4 °C,-20 °C

Storage Comment: Short term: 4°C. Long term: Store at -20°C. Avoid freeze-thaw cycles.



#### Immunohistochemistry (Paraffin-embedded Sections)

**Image 1.** Human Uterus (formalin-fixed, paraffin-embedded) stained with ERCC4 antibody ABIN364262 at 10 ug/ml followed by biotinylated anti-mouse IgG secondary antibody ABIN481714, alkaline phosphatase-streptavidin and chromogen.



#### Immunohistochemistry

**Image 2.** Anti-ERCC4 / XPF antibody IHC of human uterus. Immunohistochemistry of formalin-fixed, paraffin-embedded tissue after heat-induced antigen retrieval. Antibody concentration 10 ug/ml.