

Datasheet for ABIN364293

anti-HSPB6 antibody

3 Images

[Go to Product page](#)

Overview

Quantity:	50 µg
Target:	HSPB6
Reactivity:	Human, Rat, Mouse, Cow, Rabbit
Host:	Rabbit
Clonality:	Polyclonal
Application:	Western Blotting (WB), Immunohistochemistry (IHC), Immunoprecipitation (IP), Immunohistochemistry (Paraffin-embedded Sections) (IHC (p))

Product Details

Brand:	IHC-plus™
Immunogen:	Native HSP20 purified from human skeletal muscle.
Isotype:	IgG
Specificity:	Recognizes HSP20, Mr ~20kD. Species cross-reactivity: Human, mouse, rabbit, rat and bovine.
Purification:	Immunoaffinity purified

Target Details

Target:	HSPB6
Alternative Name:	HSPB6 / HSP20 (HSPB6 Products)
Background:	Name/Gene ID: HSPB6 Synonyms: HSPB6, Heat shock protein beta-6, Hsp20

Target Details

Gene ID: 126393

UniProt: [O14558](#)

Application Details

Application Notes: Approved: IHC, IHC-P (2.5 µg/mL), IP, WB

Usage: Immunohistochemistry: This antibody was validated for use in immunohistochemistry on a panel of 21 formalin-fixed, paraffin-embedded (FFPE) human tissues after heat induced antigen retrieval in pH 6.0 citrate buffer. After incubation with the primary antibody, slides were incubated with biotinylated secondary antibody, followed by alkaline phosphatase-streptavidin and chromogen. The stained slides were evaluated by a pathologist to confirm staining specificity. The optimal working concentration for this antibody was determined to be 2.5 µg/mL. Western Blot Analysis: 1 µg/mL detected HSP20 in RIPA lysates from rabbit skeletal muscle and mouse heart cytosol. Immunoprecipitation: Reported to immunoprecipitate HSP20 from rat heart extract and lysates of bovine carotid artery smooth muscle.

Comment: Target Species of Antibody: Human

Restrictions: For Research Use only

Handling

Format: Liquid

Concentration: Lot specific

Buffer: 0.1 M PBS, pH 7.0, 0.1 % sodium azide, 30 mg/mL BSA, 50 % glycerol.

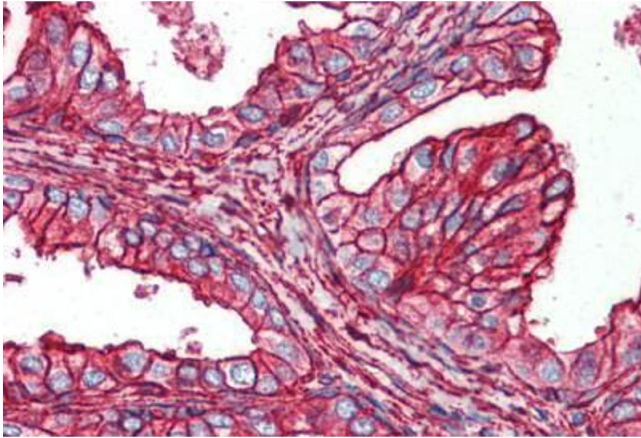
Preservative: Sodium azide

Precaution of Use: This product contains Sodium azide: a POISONOUS AND HAZARDOUS SUBSTANCE which should be handled by trained staff only.

Handling Advice: Avoid repeat freeze-thaw cycles.

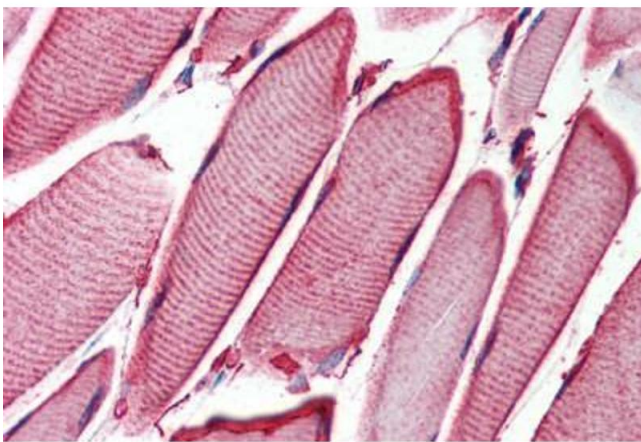
Storage: 4 °C, -20 °C

Storage Comment: Short term: 4°C. Long term: Store at -20°C. Avoid freeze-thaw cycles.



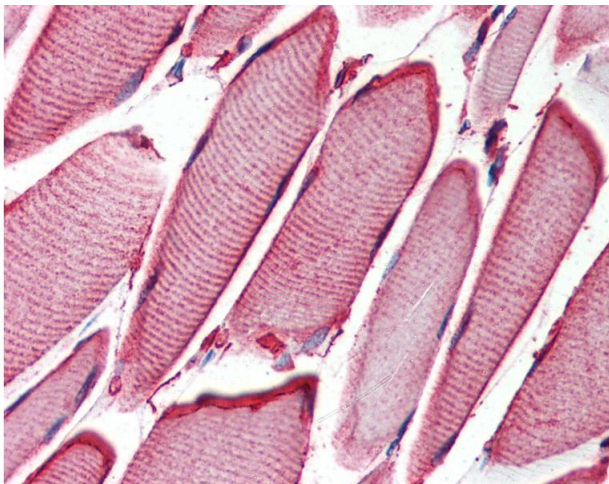
Immunohistochemistry (Paraffin-embedded Sections)

Image 1. Human Prostate (formalin-fixed, paraffin-embedded) stained with HSPB6 antibody ABIN364293 at 2.5 ug/ml followed by biotinylated goat anti-rabbit IgG secondary antibody ABIN481713, alkaline phosphatase-streptavidin and chromogen.



Immunohistochemistry (Paraffin-embedded Sections)

Image 2. Human Skeletal Muscle (formalin-fixed, paraffin-embedded) stained with HSPB6 antibody ABIN364293 at 2.5 ug/ml followed by biotinylated goat anti-rabbit IgG secondary antibody ABIN481713, alkaline phosphatase-streptavidin and chromogen.



Immunohistochemistry

Image 3. Anti-HSPB6 antibody IHC of human skeletal muscle. Immunohistochemistry of formalin-fixed, paraffin-embedded tissue after heat-induced antigen retrieval. Antibody concentration 5 ug/ml.