

Datasheet for ABIN364303

anti-FBXW7 antibody (Internal Region)



[Go to Product page](#)

2 Images

Overview

Quantity:	50 µg
Target:	FBXW7
Binding Specificity:	Internal Region
Reactivity:	Human
Host:	Rabbit
Clonality:	Polyclonal
Application:	Western Blotting (WB), Immunohistochemistry (IHC), Immunohistochemistry (Paraffin-embedded Sections) (IHC (p)), Immunoprecipitation (IP)

Product Details

Brand:	IHC-plus™
Immunogen:	Synthetic peptide derived from an internal region of the human and mouse Cdc4 (archipelago (AGO), F-box/WD-repeat protein 7, F-box and WD-40 domain protein 7, F-box protein FBW7, FBX30 and SEL-10). Type of Immunogen: Synthetic peptide
Isotype:	IgG
Specificity:	Recognizes human Cdc4 protein at ~60-80kD. Multiple bands may represent various isoforms.
Purification:	Immunoaffinity purified

Target Details

Target:	FBXW7
Alternative Name:	FBXW7 / FBW7 (FBXW7 Products)
Background:	Name/Gene ID: FBXW7 Family: F-Box Synonyms: FBXW7, AGO, Archipelago homolog, Archipelago, CDC4, F-box protein FBW7, FBXW6, F-box protein FBX30, F-box protein SEL-10, HCdc4, Homolog of C elegans sel-10, FBW6, FBX30, FBW7, HAgo, SEL-10, SEL10
Gene ID:	55294
UniProt:	Q969H0
Pathways:	Notch Signaling , EGFR Signaling Pathway

Application Details

Application Notes:	Approved: IHC, IHC-P (5 µg/mL), IP, WB (1 - 3 µg/mL) Usage: Immunohistochemistry: This antibody was validated for use in immunohistochemistry on a panel of 21 formalin-fixed, paraffin-embedded (FFPE) human tissues after heat induced antigen retrieval in pH 6.0 citrate buffer. After incubation with the primary antibody, slides were incubated with biotinylated secondary antibody, followed by alkaline phosphatase-streptavidin and chromogen. The stained slides were evaluated by a pathologist to confirm staining specificity. The optimal working concentration for this antibody was determined to be 5 µg/mL. Immunoprecipitation: 7 µg/reaction. Positive control: Human T47D, U2-OS, MCF-7, HepG2 and HeLa cell lysates.
Comment:	Target Species of Antibody: Human
Restrictions:	For Research Use only

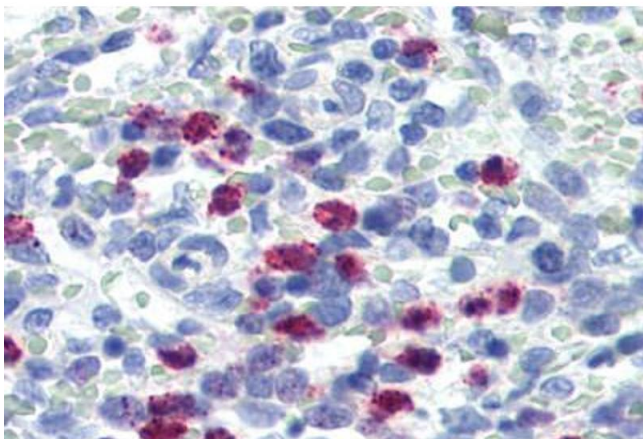
Handling

Format:	Liquid
Concentration:	Lot specific
Buffer:	PBS, pH 7.4, 0.09 % sodium azide.
Preservative:	Sodium azide

Handling

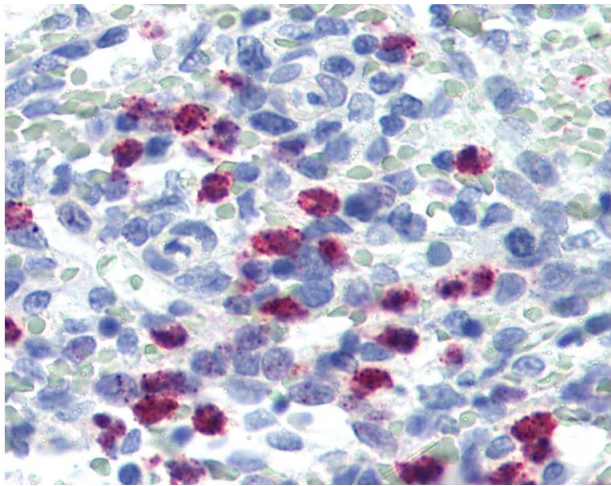
Precaution of Use:	This product contains Sodium azide: a POISONOUS AND HAZARDOUS SUBSTANCE which should be handled by trained staff only.
Handling Advice:	Avoid freeze-thaw cycles.
Storage:	4 °C,-20 °C
Storage Comment:	Short term: 4°C. Long term: Store at -20°C. Avoid freeze-thaw cycles.

Images



Immunohistochemistry (Paraffin-embedded Sections)

Image 1. Human Spleen (formalin-fixed, paraffin-embedded) stained with FBXW7 antibody ABIN364303 at 5 ug/ml followed by biotinylated goat anti-rabbit IgG secondary antibody ABIN481713, alkaline phosphatase-streptavidin and chromogen.



Immunohistochemistry

Image 2. Anti-FBXW7 antibody IHC of human spleen. Immunohistochemistry of formalin-fixed, paraffin-embedded tissue after heat-induced antigen retrieval. Antibody concentration 5 ug/ml.