

Datasheet for ABIN364310  
**anti-CYP26A1 antibody (C-Term)**



[Go to Product page](#)

2 Images

## Overview

Quantity:	50 µg
Target:	CYP26A1
Binding Specificity:	C-Term
Reactivity:	Human
Host:	Mouse
Clonality:	Monoclonal
Application:	Western Blotting (WB), ELISA, Immunohistochemistry (IHC), Immunohistochemistry (Paraffin-embedded Sections) (IHC (p))

## Product Details

Brand:	IHC-plus™
Immunogen:	Synthetic peptide derived from the C-terminus of the human CYP 450 26A1 protein. Type of Immunogen: Synthetic peptide
Clone:	F27 P6 A1
Isotype:	IgG1
Purification:	Protein A/G purified

## Target Details

Target:	CYP26A1
Alternative Name:	CYP26 / CYP26A1 ( <a href="#">CYP26A1 Products</a> )

## Target Details

---

Background: Name/Gene ID: CYP26A1  
Family: Cytochrome P450  
  
Synonyms: CYP26A1, CYP26, Cytochrome P450 26A1, Cytochrome P450RAI, HP450RAI, p450RAI, p450RAI1, Retinoic acid 4-hydroxylase, CP26

Gene ID: 1592

UniProt: [O43174](#)

Pathways: [Retinoic Acid Receptor Signaling Pathway](#), [Monocarboxylic Acid Catabolic Process](#)

## Application Details

---

Application Notes: Approved: ELISA, IHC, IHC-P (10 µg/mL), WB

Usage: Immunohistochemistry: This antibody was validated for use in immunohistochemistry on a panel of 21 formalin-fixed, paraffin-embedded (FFPE) human tissues after heat induced antigen retrieval in pH 6.0 citrate buffer. After incubation with the primary antibody, slides were incubated with biotinylated secondary antibody, followed by alkaline phosphatase-streptavidin and chromogen. The stained slides were evaluated by a pathologist to confirm staining specificity. The optimal working concentration for this antibody was determined to be 10 µg/mL.

Comment: Target Species of Antibody: Human

Restrictions: For Research Use only

## Handling

---

Format: Liquid

Concentration: Lot specific

Buffer: PBS, 0.08 % sodium azide. Sourced in TCS.

Preservative: Sodium azide

Precaution of Use: This product contains Sodium azide: a POISONOUS AND HAZARDOUS SUBSTANCE which should be handled by trained staff only.

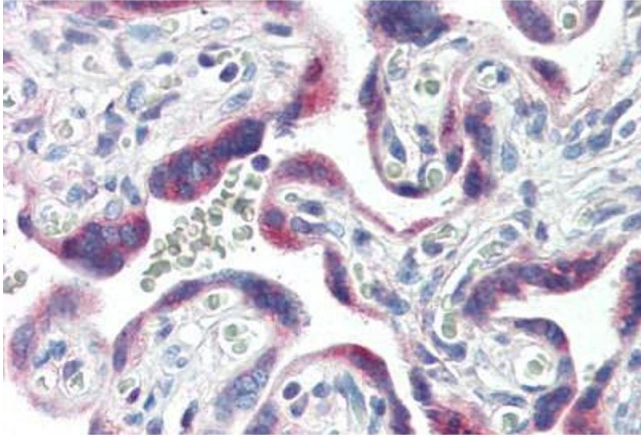
Handling Advice: Minimize freezing and thawing.

Storage: -20 °C

## Handling

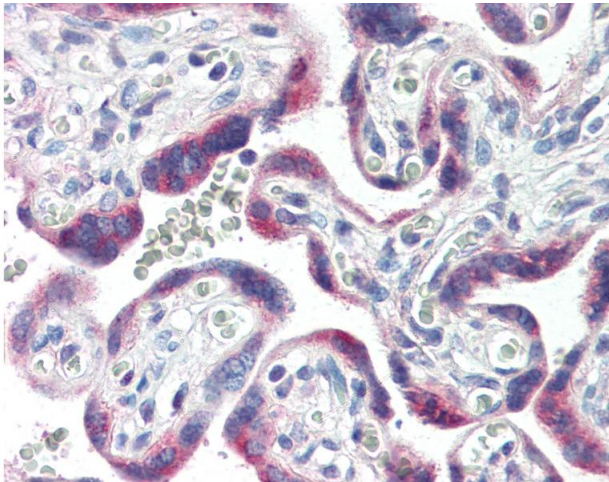
Storage Comment: Aliquot and store at -20°C. Avoid freeze-thaw cycles.

## Images



### Immunohistochemistry (Paraffin-embedded Sections)

**Image 1.** Human Placenta (formalin-fixed, paraffin-embedded) stained with CYP26A1 antibody ABIN364310 at 10 ug/ml followed by biotinylated anti-mouse IgG secondary antibody ABIN481714, alkaline phosphatase-streptavidin and chromogen.



### Immunohistochemistry

**Image 2.** Anti-CYP26A1 antibody IHC of human placenta. Immunohistochemistry of formalin-fixed, paraffin-embedded tissue after heat-induced antigen retrieval. Antibody concentration 10 ug/ml.