

Datasheet for ABIN364312
anti-Claudin 7 antibody (C-Term)

2 Images

[Go to Product page](#)

Overview

| | |
|----------------------|---|
| Quantity: | 50 µg |
| Target: | Claudin 7 (CLDN7) |
| Binding Specificity: | C-Term |
| Reactivity: | Human |
| Host: | Mouse |
| Clonality: | Monoclonal |
| Application: | Western Blotting (WB), ELISA, Immunohistochemistry (IHC), Immunohistochemistry (Paraffin-embedded Sections) (IHC (p)), Immunoprecipitation (IP) |

Product Details

| | |
|---------------|--|
| Brand: | IHC-plus™ |
| Immunogen: | Synthetic peptide derived from the C-terminal region of the human Claudin-7 protein. Type of Immunogen: Synthetic peptide |
| Isotype: | IgG2a kappa |
| Specificity: | Specific for the claudin-7 protein and does not cross-react with Claudin-3 or -4. On Western blots, it identifies a band at ~22kD. Reactivity has been confirmed with T47D cells by Western blotting and with formalin-fixed, paraffin-embedded human breast cancer tissues by immunohistochemistry. |
| Purification: | Protein A purified |

Target Details

| | |
|-------------------|--|
| Target: | Claudin 7 (CLDN7) |
| Alternative Name: | CLDN7 / Claudin 7 (CLDN7 Products) |
| Background: | Name/Gene ID: CLDN7 Family: Claudin Synonyms: CLDN7, Claudin-7, Claudin-1, CLDN-7, Hs.84359, CEPTRL2, Claudin 7, CPETRL2 |
| Gene ID: | 1366 |
| UniProt: | O95471 |
| Pathways: | Hepatitis C |

Application Details

| | |
|--------------------|---|
| Application Notes: | Approved: ELISA (0.1 - 1 µg/mL), IHC, IHC-P (10 µg/mL), IP, WB (1 µg/mL) Usage: Immunohistochemistry: This antibody was validated for use in immunohistochemistry on a panel of 21 formalin-fixed, paraffin-embedded (FFPE) human tissues after heat induced antigen retrieval in pH 6.0 citrate buffer. After incubation with the primary antibody, slides were incubated with biotinylated secondary antibody, followed by alkaline phosphatase-streptavidin and chromogen. The stained slides were evaluated by a pathologist to confirm staining specificity. The optimal working concentration for this antibody was determined to be 10 µg/mL. Positive control: Western Blot: T47D cells. |
| Comment: | Target Species of Antibody: Human |
| Restrictions: | For Research Use only |

Handling

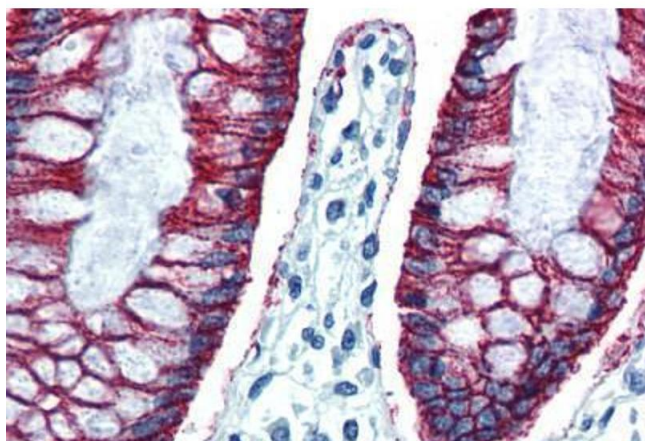
| | |
|--------------------|--|
| Format: | Liquid |
| Concentration: | Lot specific |
| Buffer: | PBS, pH 7.4, 0.1 % sodium azide. |
| Preservative: | Sodium azide |
| Precaution of Use: | This product contains Sodium azide: a POISONOUS AND HAZARDOUS SUBSTANCE which should be handled by trained staff only. |
| Handling Advice: | Avoid freeze-thaw cycles. |

Handling

Storage: 4 °C, -20 °C

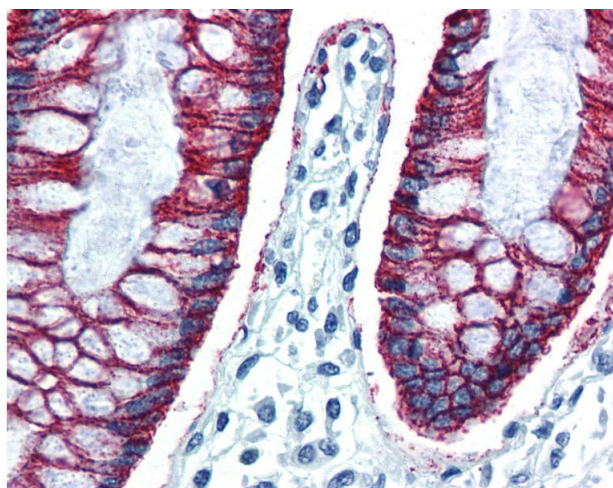
Storage Comment: Short term: 4°C. Long term: Store at -20°C. Avoid freeze-thaw cycles.

Validation report #029594 for ELISA (ELISA)



Immunohistochemistry (Paraffin-embedded Sections)

Image 1. Human Colon (formalin-fixed, paraffin-embedded) stained with CLDN7 antibody ABIN364312 at 10 ug/ml followed by biotinylated anti-mouse IgG secondary antibody ABIN481714, alkaline phosphatase-streptavidin and chromogen.



Immunohistochemistry

Image 2. Anti-CLDN7 / Claudin-7 antibody IHC of human colon. Immunohistochemistry of formalin-fixed, paraffin-embedded tissue after heat-induced antigen retrieval. Antibody concentration 10 ug/ml.