

Datasheet for ABIN364315

anti-SETD7 antibody

3 Images

[Go to Product page](#)

Overview

Quantity:	50 µg
Target:	SETD7
Reactivity:	Human
Host:	Mouse
Clonality:	Monoclonal
Application:	Western Blotting (WB), ELISA, Immunohistochemistry (IHC), Immunohistochemistry (Paraffin-embedded Sections) (IHC (p))

Product Details

Brand:	IHC-plus™
Immunogen:	Recombinant human SET7/9 protein Isotype Mouse IgG2b, heavy chains and kappa light chains. Type of Immunogen: Recombinant protein
Clone:	S4E5
Isotype:	IgG2b kappa
Purification:	Protein G purified

Target Details

Target:	SETD7
Alternative Name:	SETD7 / SET7 (SETD7 Products)

Target Details

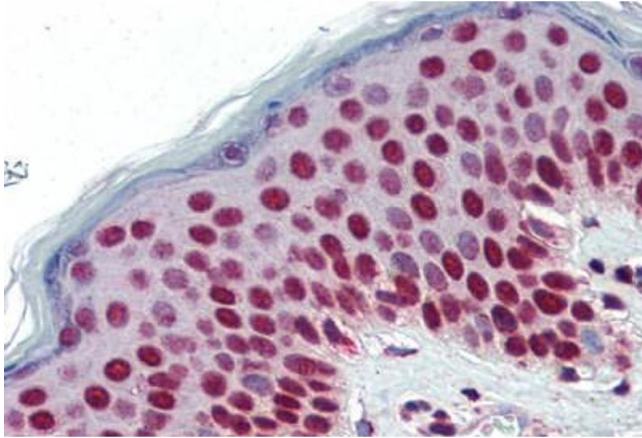
Background:	Name/Gene ID: SETD7 Synonyms: SETD7, Lysine N-methyltransferase 7, KIAA1717, SET9, H3-K4-HMTase SETD7, KMT7, SET7, SET7/9
Gene ID:	80854
UniProt:	Q8WTS6

Application Details

Application Notes:	Approved: ELISA, IHC, IHC-P (5 µg/mL), WB (1:250 - 1:2000) Usage: Immunohistochemistry: This antibody was validated for use in immunohistochemistry on a panel of 21 formalin-fixed, paraffin-embedded (FFPE) human tissues after heat induced antigen retrieval in pH 6.0 citrate buffer. After incubation with the primary antibody, slides were incubated with biotinylated secondary antibody, followed by alkaline phosphatase-streptavidin and chromogen. The stained slides were evaluated by a pathologist to confirm staining specificity. The optimal working concentration for this antibody was determined to be 5 µg/mL.
Comment:	Target Species of Antibody: Human
Restrictions:	For Research Use only

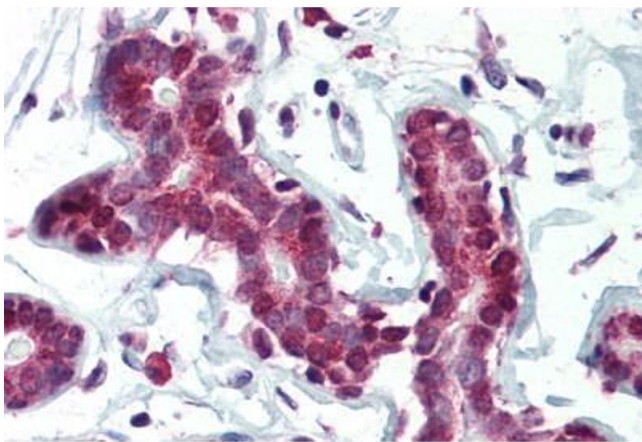
Handling

Format:	Liquid
Concentration:	Lot specific
Buffer:	PBS, pH 7.4, 0.1 % sodium azide
Preservative:	Sodium azide
Precaution of Use:	This product contains Sodium azide: a POISONOUS AND HAZARDOUS SUBSTANCE which should be handled by trained staff only.
Handling Advice:	Avoid freeze-thaw cycles.
Storage:	4 °C, -20 °C
Storage Comment:	Short term: 4°C. Long term: Store at -20°C. Avoid freeze-thaw cycles.



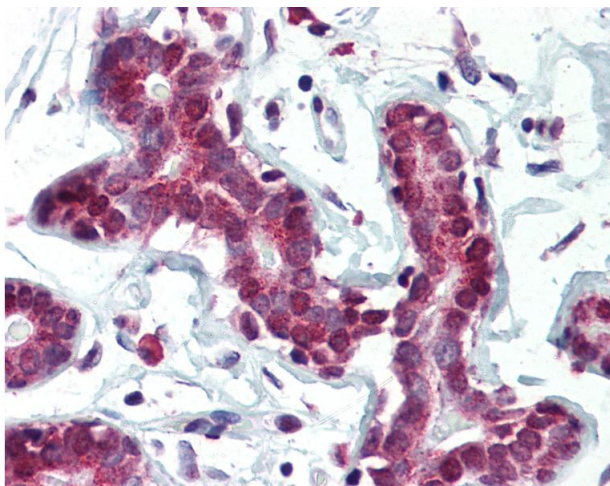
Immunohistochemistry (Paraffin-embedded Sections)

Image 1. Human Skin (formalin-fixed, paraffin-embedded) stained with SETD7 antibody ABIN364315 at 5 ug/ml followed by biotinylated anti-mouse IgG secondary antibody ABIN481714, alkaline phosphatase-streptavidin and chromogen.



Immunohistochemistry (Paraffin-embedded Sections)

Image 2. Human Breast (formalin-fixed, paraffin-embedded) stained with SETD7 antibody ABIN364315 at 5 ug/ml followed by biotinylated anti-mouse IgG secondary antibody ABIN481714, alkaline phosphatase-streptavidin and chromogen.



Immunohistochemistry

Image 3. Anti-SETD7 / SET7 antibody IHC of human breast. Immunohistochemistry of formalin-fixed, paraffin-embedded tissue after heat-induced antigen retrieval. Antibody concentration 5 ug/ml.