

Datasheet for ABIN364316

**anti-PPP2CA antibody****2** Images[Go to Product page](#)

## Overview

Quantity:	50 µg
Target:	PPP2CA
Reactivity:	Human
Host:	Mouse
Clonality:	Monoclonal
Application:	Western Blotting (WB), ELISA, Immunohistochemistry (IHC), Immunohistochemistry (Paraffin-embedded Sections) (IHC (p)), Immunoprecipitation (IP)

## Product Details

Brand:	IHC-plus™
Immunogen:	Recombinant human PP2Ckappa protein. Type of Immunogen: Recombinant protein
Clone:	P6C7
Isotype:	IgG2b kappa
Purification:	Protein G purified

## Target Details

Target:	PPP2CA
Alternative Name:	PP2Ac / PPP2CA ( <a href="#">PPP2CA Products</a> )
Background:	Name/Gene ID: PPP2CA

## Target Details

Subfamily: PP2A

Family: Protein Phosphatase

Synonyms: PPP2CA, PP2Ac, PP2Calpha, ppp2A1, Protein phosphatase 2A alpha, Replication protein C, PP2CA, RP-C, PP2A-alpha

Gene ID: 5515

UniProt: [P67775](#)

Pathways: [PI3K-Akt Signaling](#), [Mitotic G1-G1/S Phases](#), [Hepatitis C](#), [Toll-Like Receptors Cascades](#)

## Application Details

Application Notes: Approved: ELISA, IHC, IHC-P (15 µg/mL), IP, WB (1:250 - 1:1000)

Usage: Immunohistochemistry: This antibody was validated for use in immunohistochemistry on a panel of 21 formalin-fixed, paraffin-embedded (FFPE) human tissues after heat induced antigen retrieval in pH 6.0 citrate buffer. After incubation with the primary antibody, slides were incubated with biotinylated secondary antibody, followed by alkaline phosphatase-streptavidin and chromogen. The stained slides were evaluated by a pathologist to confirm staining specificity. The optimal working concentration for this antibody was determined to be 15 µg/mL.

Comment: Target Species of Antibody: Human

Restrictions: For Research Use only

## Handling

Format: Liquid

Concentration: Lot specific

Buffer: PBS, pH 7.4, 0.1 % sodium azide

Preservative: Sodium azide

Precaution of Use: This product contains Sodium azide: a POISONOUS AND HAZARDOUS SUBSTANCE which should be handled by trained staff only.

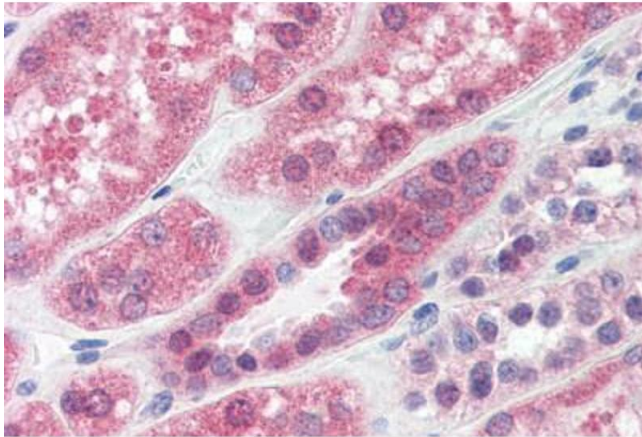
Handling Advice: Avoid freeze-thaw cycles.

Storage: 4 °C, -20 °C

## Handling

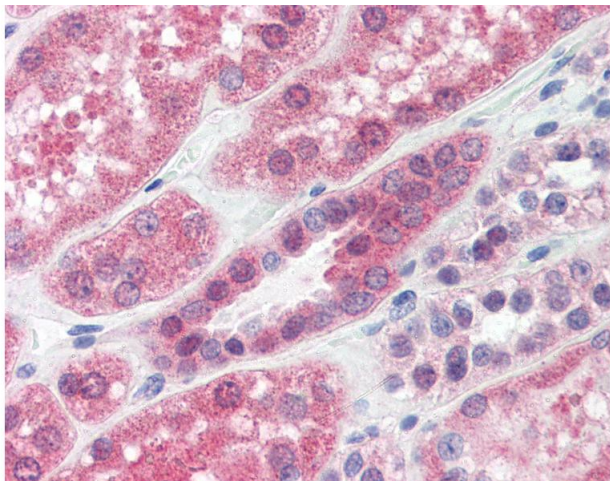
Storage Comment: Short term: 4°C. Long term: Store at -20°C. Avoid freeze-thaw cycles.

## Images



### Immunohistochemistry (Paraffin-embedded Sections)

**Image 1.** Human Kidney (formalin-fixed, paraffin-embedded) stained with PPP2CA antibody ABIN364316 at 15 ug/ml followed by biotinylated anti-mouse IgG secondary antibody ABIN481714, alkaline phosphatase-streptavidin and chromogen.



### Immunohistochemistry

**Image 2.** Anti-PPP2CA / PP2Ac antibody IHC of human kidney. Immunohistochemistry of formalin-fixed, paraffin-embedded tissue after heat-induced antigen retrieval. Antibody concentration 15 ug/ml.