

Datasheet for ABIN364329  
**anti-PSPH antibody (AA 1-225)**



[Go to Product page](#)

3 Images

### Overview

Quantity:	50 µg
Target:	PSPH
Binding Specificity:	AA 1-225
Reactivity:	Human, Mouse
Host:	Mouse
Clonality:	Monoclonal
Application:	Western Blotting (WB), ELISA, Immunohistochemistry (IHC), Immunohistochemistry (Paraffin-embedded Sections) (IHC (p))

### Product Details

Brand:	IHC-plus™
Immunogen:	Recombinant human PSP (1-225aa) purified from E. coli. Type of Immunogen: Recombinant protein
Clone:	3G12
Isotype:	IgG1 kappa
Purification:	Protein G purified

### Target Details

Target:	PSPH
Alternative Name:	PSPH / PSP ( <a href="#">PSPH Products</a> )

## Target Details

---

Background:	Name/Gene ID: PSPH  Synonyms: PSPH, L-3-phosphoserine phosphatase, Phosphoserine phosphatase, PSPase, PSP, PSPHD
Gene ID:	5723
UniProt:	<a href="#">P78330</a>
Pathways:	<a href="#">Warburg Effect</a>

## Application Details

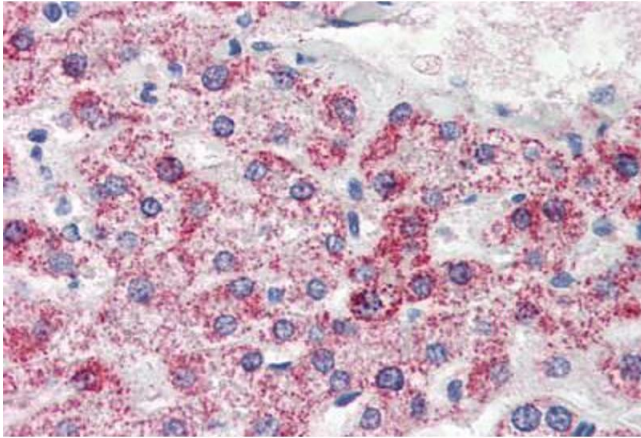
---

Application Notes:	Approved: ELISA, IHC, IHC-P (10 µg/mL), WB (1:1000 - 1:2000)  Usage: Immunohistochemistry: This antibody was validated for use in immunohistochemistry on a panel of 21 formalin-fixed, paraffin-embedded (FFPE) human tissues after heat induced antigen retrieval in pH 6.0 citrate buffer. After incubation with the primary antibody, slides were incubated with biotinylated secondary antibody, followed by alkaline phosphatase-streptavidin and chromogen. The stained slides were evaluated by a pathologist to confirm staining specificity. The optimal working concentration for this antibody was determined to be 10 µg/mL.
Comment:	Target Species of Antibody: Human
Restrictions:	For Research Use only

## Handling

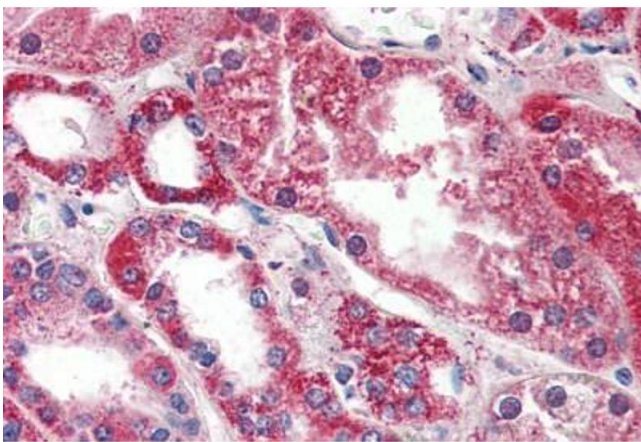
---

Format:	Liquid
Concentration:	Lot specific
Buffer:	PBS, pH 7.4, 0.1 % sodium azide. Sourced in Ascites.
Preservative:	Sodium azide
Precaution of Use:	This product contains Sodium azide: a POISONOUS AND HAZARDOUS SUBSTANCE which should be handled by trained staff only.
Handling Advice:	Avoid freeze-thaw cycles.
Storage:	4 °C, -20 °C
Storage Comment:	Short term: 4°C. Long term: Store at -20°C. Avoid freeze-thaw cycles.



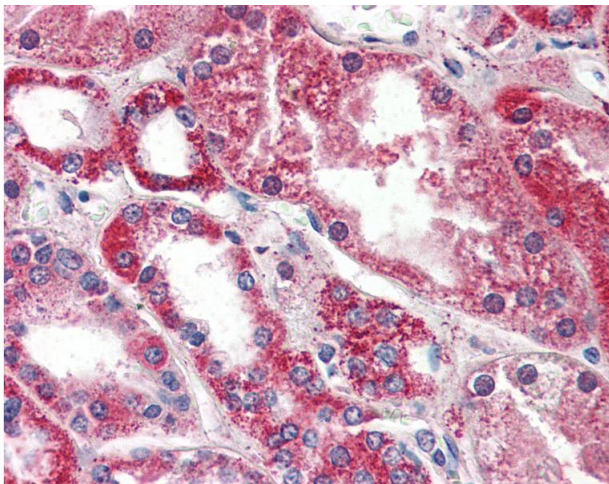
#### Immunohistochemistry (Paraffin-embedded Sections)

**Image 1.** Human Liver (formalin-fixed, paraffin-embedded) stained with PSPH antibody ABIN364329 at 10 ug/ml followed by biotinylated anti-mouse IgG secondary antibody ABIN481714, alkaline phosphatase-streptavidin and chromogen.



#### Immunohistochemistry (Paraffin-embedded Sections)

**Image 2.** Human Kidney (formalin-fixed, paraffin-embedded) stained with PSPH antibody ABIN364329 at 10 ug/ml followed by biotinylated anti-mouse IgG secondary antibody ABIN481714, alkaline phosphatase-streptavidin and chromogen.



#### Immunohistochemistry

**Image 3.** Anti-PSPH antibody IHC of human kidney. Immunohistochemistry of formalin-fixed, paraffin-embedded tissue after heat-induced antigen retrieval. Antibody concentration 10 ug/ml.