

Datasheet for ABIN364336
anti-REX01 antibody (AA 1060-1221)[Go to Product page](#)

3 Images

Overview

Quantity:	50 µg
Target:	REX01
Binding Specificity:	AA 1060-1221
Reactivity:	Human
Host:	Mouse
Clonality:	Monoclonal
Application:	ELISA, Immunohistochemistry (IHC), Immunohistochemistry (Paraffin-embedded Sections) (IHC (p)), Western Blotting (WB)

Product Details

Brand:	IHC-plus™
Immunogen:	Recombinant human REX01 (1060-1221aa) purified from E. coli. Type of Immunogen: Recombinant protein
Clone:	4H5
Isotype:	IgG2b kappa
Purification:	Protein G purified

Target Details

Target:	REX01
Alternative Name:	REX01 / REX1 (REX01 Products)

Target Details

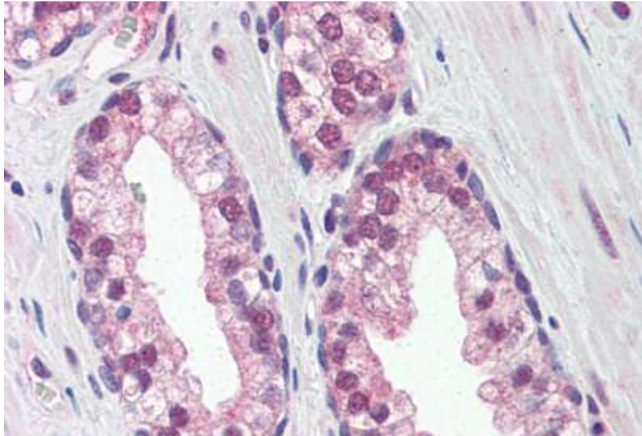
Background:	Name/Gene ID: REXO1 Synonyms: REXO1, ELOABP1, Elongin A-binding protein 1, Elongin-A-binding protein 1, KIAA1138, REX1, RNA exonuclease 1 homolog, TCEB3BP1, EloA-BP1, Elongin A binding protein 1
Gene ID:	57455
UniProt:	Q8N1G1

Application Details

Application Notes:	Approved: ELISA, IHC, IHC-P (5 µg/mL), WB (1:1000 - 1:2000) Usage: Immunohistochemistry: This antibody was validated for use in immunohistochemistry on a panel of 21 formalin-fixed, paraffin-embedded (FFPE) human tissues after heat induced antigen retrieval in pH 6.0 citrate buffer. After incubation with the primary antibody, slides were incubated with biotinylated secondary antibody, followed by alkaline phosphatase-streptavidin and chromogen. The stained slides were evaluated by a pathologist to confirm staining specificity. The optimal working concentration for this antibody was determined to be 5 µg/mL.
Comment:	Target Species of Antibody: Human
Restrictions:	For Research Use only

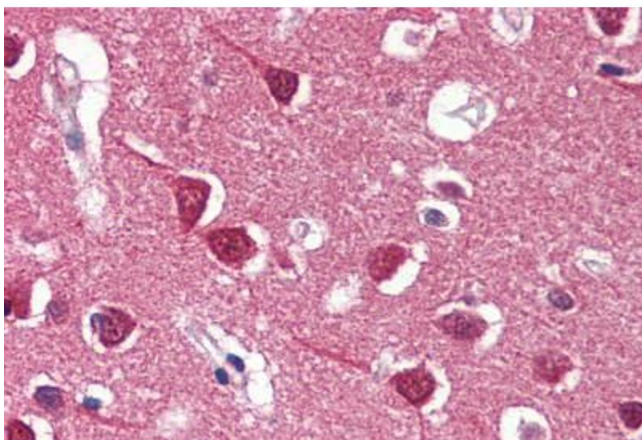
Handling

Format:	Liquid
Concentration:	Lot specific
Buffer:	PBS, pH 7.4, 0.1 % sodium azide
Preservative:	Sodium azide
Precaution of Use:	This product contains Sodium azide: a POISONOUS AND HAZARDOUS SUBSTANCE which should be handled by trained staff only.
Handling Advice:	Avoid freeze-thaw cycles.
Storage:	4 °C, -20 °C
Storage Comment:	Short term: 4°C. Long term: Store at -20°C. Avoid freeze-thaw cycles.



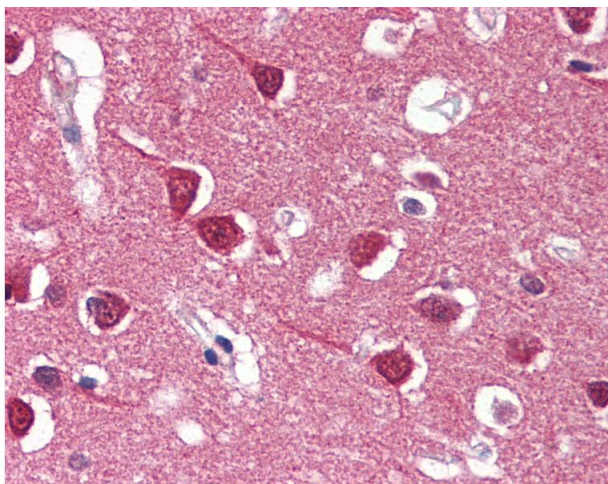
Immunohistochemistry (Paraffin-embedded Sections)

Image 1. Human Prostate (formalin-fixed, paraffin-embedded) stained with REXO1 antibody ABIN364336 at 5 ug/ml followed by biotinylated anti-mouse IgG secondary antibody ABIN481714, alkaline phosphatase-streptavidin and chromogen.



Immunohistochemistry (Paraffin-embedded Sections)

Image 2. Human Brain, Cortex (formalin-fixed, paraffin-embedded) stained with REXO1 antibody ABIN364336 at 5 ug/ml followed by biotinylated anti-mouse IgG secondary antibody ABIN481714, alkaline phosphatase-streptavidin and chromogen.



Immunohistochemistry

Image 3. Anti-REXO1 antibody IHC of human brain, cortex. Immunohistochemistry of formalin-fixed, paraffin-embedded tissue after heat-induced antigen retrieval. Antibody concentration 5 ug/ml.