

Datasheet for ABIN364356  
**anti-Cathepsin L antibody (AA 114-333)**

## 3 Images

[Go to Product page](#)

## Overview

Quantity:	50 µg
Target:	Cathepsin L (CTSL1)
Binding Specificity:	AA 114-333
Reactivity:	Human
Host:	Mouse
Clonality:	Monoclonal
Conjugate:	This Cathepsin L antibody is un-conjugated
Application:	Western Blotting (WB), ELISA, Immunohistochemistry (IHC), Immunohistochemistry (Paraffin-embedded Sections) (IHC (p))

## Product Details

Brand:	IHC-plus™
Immunogen:	Recombinant human Cathepsin L (114-333aa) purified from E. coli.  Type of Immunogen: Recombinant protein
Clone:	2H7
Isotype:	IgG2b kappa
Purification:	Protein G purified

## Target Details

Target:	Cathepsin L (CTSL1)
---------	---------------------

## Target Details

Alternative Name:	CTSL / Cathepsin L ( <a href="#">CTSL1 Products</a> )
Background:	Name/Gene ID: CTSL Subfamily: Cysteine C1 Family: Protease  Synonyms: CTSL, Cathepsin L, Cathepsin L1, CATL, CTSL1, Major excreted protein, MEP
Gene ID:	1514
UniProt:	<a href="#">P07711</a>
Pathways:	<a href="#">Activation of Innate immune Response</a> , <a href="#">Toll-Like Receptors Cascades</a>

## Application Details

Application Notes:	Approved: ELISA, IHC, IHC-P (5 µg/mL), WB (1:1000 - 1:2000)  Usage: Immunohistochemistry: This antibody was validated for use in immunohistochemistry on a panel of 21 formalin-fixed, paraffin-embedded (FFPE) human tissues after heat induced antigen retrieval in pH 6.0 citrate buffer. After incubation with the primary antibody, slides were incubated with biotinylated secondary antibody, followed by alkaline phosphatase-streptavidin and chromogen. The stained slides were evaluated by a pathologist to confirm staining specificity. The optimal working concentration for this antibody was determined to be 5 µg/mL.
Comment:	Target Species of Antibody: Human
Restrictions:	For Research Use only

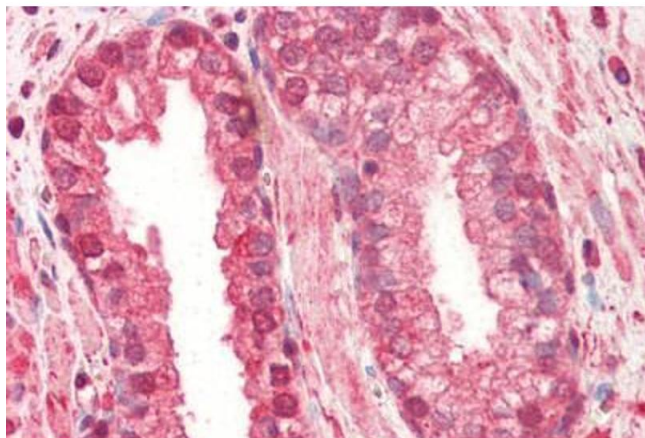
## Handling

Format:	Liquid
Concentration:	Lot specific
Buffer:	PBS, pH 7.4, 0.1 % sodium azide
Preservative:	Sodium azide
Precaution of Use:	This product contains Sodium azide: a POISONOUS AND HAZARDOUS SUBSTANCE which should be handled by trained staff only.
Handling Advice:	Avoid freeze-thaw cycles.
Storage:	4 °C, -20 °C

## Handling

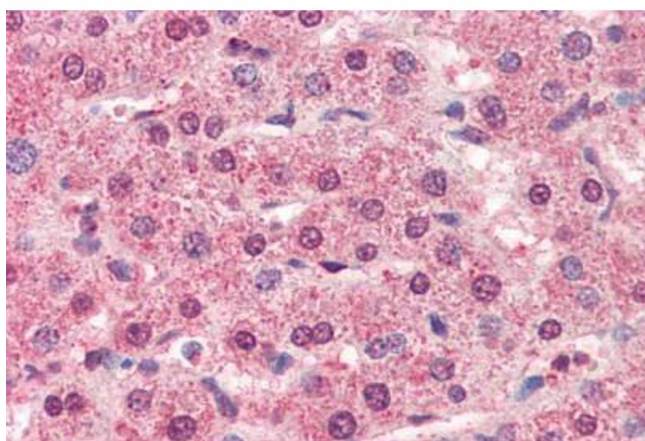
Storage Comment: Short term: 4°C. Long term: Store at -20°C. Avoid freeze-thaw cycles.

## Images



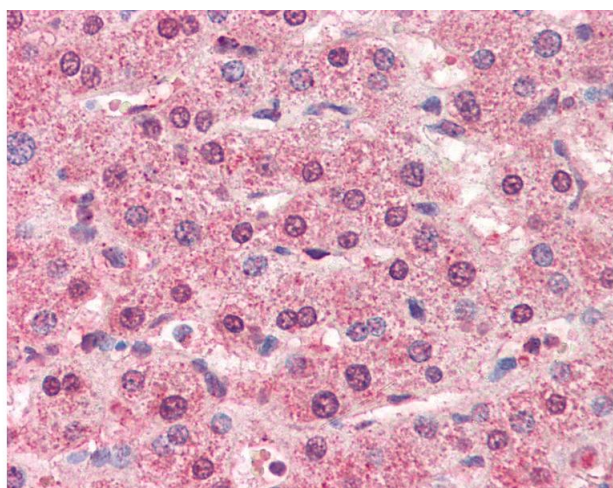
### Immunohistochemistry (Paraffin-embedded Sections)

**Image 1.** Human Prostate (formalin-fixed, paraffin-embedded) stained with CTSL1 antibody ABIN364356 at 5 ug/ml followed by biotinylated anti-mouse IgG secondary antibody ABIN481714, alkaline phosphatase-streptavidin and chromogen.



### Immunohistochemistry (Paraffin-embedded Sections)

**Image 2.** Human Liver (formalin-fixed, paraffin-embedded) stained with CTSL1 antibody ABIN364356 at 5 ug/ml followed by biotinylated anti-mouse IgG secondary antibody ABIN481714, alkaline phosphatase-streptavidin and chromogen.



### Immunohistochemistry

**Image 3.** Anti-CTSL1 / Cathepsin L antibody IHC of human liver. Immunohistochemistry of formalin-fixed, paraffin-embedded tissue after heat-induced antigen retrieval. Antibody concentration 5 ug/ml.