

Datasheet for ABIN364361
anti-14-3-3 theta antibody (AA 1-245)

3 Images

[Go to Product page](#)

Overview

| | |
|----------------------|---|
| Quantity: | 50 µg |
| Target: | 14-3-3 theta (YWHAQ) |
| Binding Specificity: | AA 1-245 |
| Reactivity: | Human |
| Host: | Mouse |
| Clonality: | Monoclonal |
| Conjugate: | This 14-3-3 theta antibody is un-conjugated |
| Application: | Western Blotting (WB), ELISA, Immunohistochemistry (IHC), Immunohistochemistry (Paraffin-embedded Sections) (IHC (p)) |

Product Details

| | |
|---------------|--|
| Brand: | IHC-plus™ |
| Immunogen: | Recombinant human 14-3-3 tau (1-245aa) purified from E. coli. NCBI Accession No.: NP_006817. Type of Immunogen: Recombinant protein |
| Clone: | AT1A1 |
| Isotype: | IgG1 |
| Purification: | Protein G purified |

Target Details

| | |
|-------------------|---|
| Target: | 14-3-3 theta (YWHAQ) |
| Alternative Name: | YWHAQ / 14-3-3 Theta (YWHAQ Products) |
| Background: | Name/Gene ID: YWHAQ Synonyms: YWHAQ, 14-3-3 protein T-cell, 14-3-3 protein theta, 14-3-3 protein tau, 14-3-3, 14-3-3 Tau, 1C5, Protein HS1, HS1, Protein tau |
| Gene ID: | 10971 |
| NCBI Accession: | NP_006817 |
| UniProt: | P27348 |
| Pathways: | Apoptosis , Myometrial Relaxation and Contraction |

Application Details

| | |
|--------------------|---|
| Application Notes: | Approved: ELISA, IHC, IHC-P (10 µg/mL), WB (1:1000 - 1:2000) Usage: Immunohistochemistry: This antibody was validated for use in immunohistochemistry on a panel of 21 formalin-fixed, paraffin-embedded (FFPE) human tissues after heat induced antigen retrieval in pH 6.0 citrate buffer. After incubation with the primary antibody, slides were incubated with biotinylated secondary antibody, followed by alkaline phosphatase-streptavidin and chromogen. The stained slides were evaluated by a pathologist to confirm staining specificity. The optimal working concentration for this antibody was determined to be 10 µg/mL. |
| Comment: | Target Species of Antibody: Human |
| Restrictions: | For Research Use only |

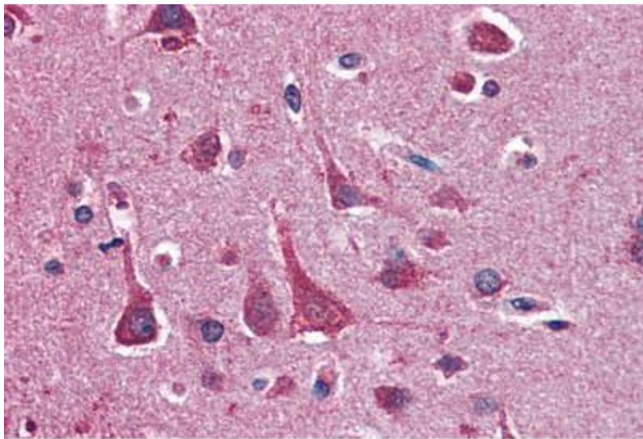
Handling

| | |
|--------------------|--|
| Format: | Liquid |
| Concentration: | Lot specific |
| Buffer: | PBS, pH 7.4, 0.1 % sodium azide. Sourced in Ascites. |
| Preservative: | Sodium azide |
| Precaution of Use: | This product contains Sodium azide: a POISONOUS AND HAZARDOUS SUBSTANCE which should be handled by trained staff only. |

Handling

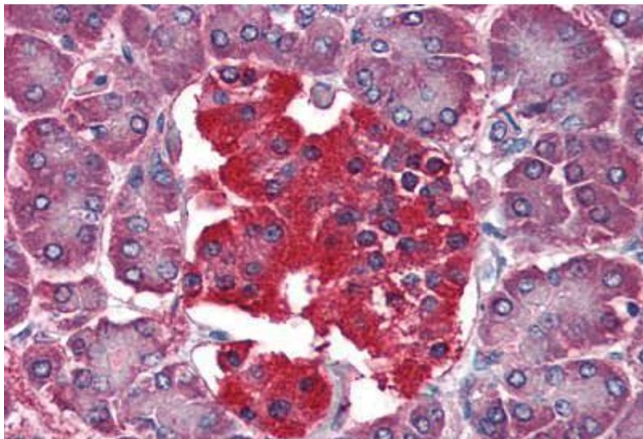
| | |
|------------------|---|
| Handling Advice: | avoid freeze thaw cycles. |
| Storage: | 4 °C,-20 °C |
| Storage Comment: | Short term 4°C, long term aliquot and store at -20°C, avoid freeze-thaw cycles. |

Images



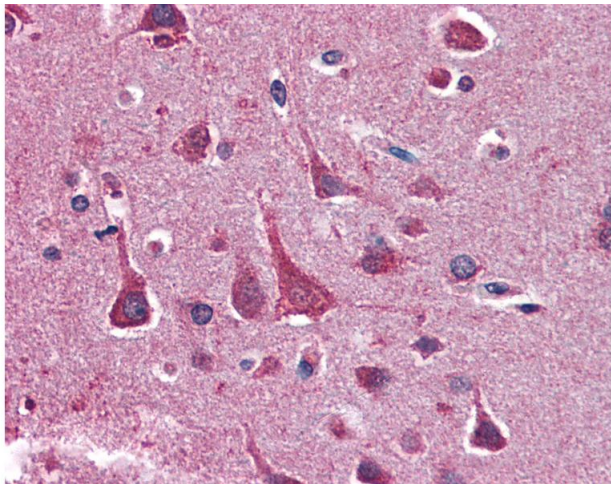
Immunohistochemistry (Paraffin-embedded Sections)

Image 1. Human Brain, Cortex (formalin-fixed, paraffin-embedded) stained with YWHAQ antibody ABIN364361 at 10 ug/ml followed by biotinylated anti-mouse IgG secondary antibody ABIN481714, alkaline phosphatase-streptavidin and chromogen.



Immunohistochemistry (Paraffin-embedded Sections)

Image 2. Human Pancreas (formalin-fixed, paraffin-embedded) stained with YWHAQ antibody ABIN364361 at 10 ug/ml followed by biotinylated anti-mouse IgG secondary antibody ABIN481714, alkaline phosphatase-streptavidin and chromogen.



Immunohistochemistry

Image 3. Anti-YWHAQ antibody IHC of human brain, cortex. Immunohistochemistry of formalin-fixed, paraffin-embedded tissue after heat-induced antigen retrieval. Antibody concentration 10 ug/ml.