

Datasheet for ABIN364379

anti-Septin 5 antibody**2** Images[Go to Product page](#)

Overview

Quantity:	50 µg
Target:	Septin 5 (SEPT5)
Reactivity:	Human, Rat, Mouse
Host:	Mouse
Clonality:	Monoclonal
Application:	Western Blotting (WB), Immunohistochemistry (IHC), Immunohistochemistry (Paraffin-embedded Sections) (IHC (p))

Product Details

Brand:	IHC-plus™
Immunogen:	Immunoprecipitate of human brain. Type of Immunogen: Purified protein
Clone:	SP18
Isotype:	IgG1
Purification:	Protein G purified

Target Details

Target:	Septin 5 (SEPT5)
Alternative Name:	SEPT5 / Septin 5 (SEPT5 Products)
Background:	Name/Gene ID: SEPT5

Target Details

Synonyms: SEPT5, CDCREL-1, CDCREL1, H5, HCDCREL-1, Peanut-like 1 (Drosophila), Peanut-like 1, Peanut-like protein 1, Septin 5, Septin-5, CDCREL, PNUTL1

Gene ID: 5413

UniProt: [Q99719](#)

Pathways: [Synaptic Vesicle Exocytosis](#)

Application Details

Application Notes: Approved: IHC, IHC-P (20 µg/mL), WB (1 µg/mL)

Usage: Immunohistochemistry: This antibody was validated for use in immunohistochemistry on a panel of 21 formalin-fixed, paraffin-embedded (FFPE) human tissues after heat induced antigen retrieval in pH 6.0 citrate buffer. After incubation with the primary antibody, slides were incubated with biotinylated secondary antibody, followed by alkaline phosphatase-streptavidin and chromogen. The stained slides were evaluated by a pathologist to confirm staining specificity. The optimal working concentration for this antibody was determined to be 20 µg/mL.

Comment: Target Species of Antibody: Human

Restrictions: For Research Use only

Handling

Format: Liquid

Concentration: Lot specific

Buffer: PBS, pH 7.2, 50 % glycerol, 0.09 % azide.

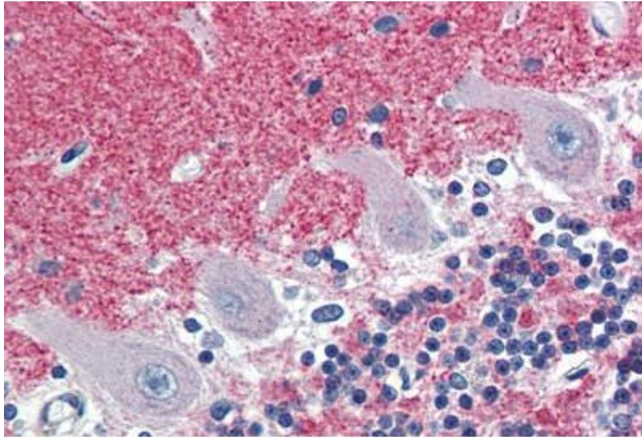
Preservative: Sodium azide

Precaution of Use: This product contains Sodium azide: a POISONOUS AND HAZARDOUS SUBSTANCE which should be handled by trained staff only.

Handling Advice: Avoid repeated freezing and thawing.

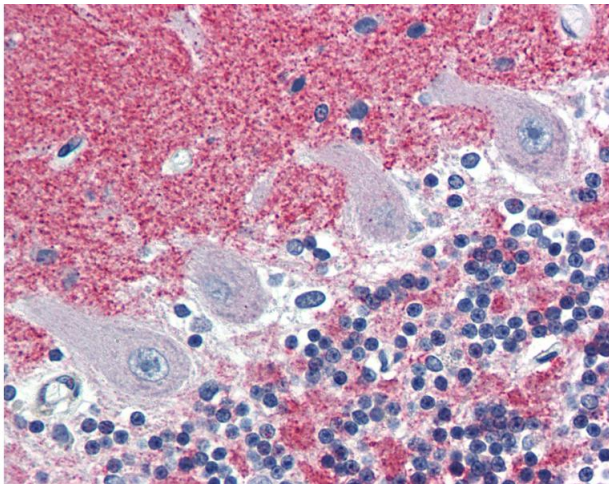
Storage: 4 °C, -20 °C

Storage Comment: 4°C or -20°C, Avoid freeze-thaw cycles.



Immunohistochemistry (Paraffin-embedded Sections)

Image 1. Human Brain, Cerebellum (formalin-fixed, paraffin-embedded) stained with SEPT5 antibody ABIN364379 at 20 ug/ml followed by biotinylated anti-mouse IgG secondary antibody ABIN481714, alkaline phosphatase-streptavidin and chromogen.



Immunohistochemistry

Image 2. Anti-SEPT5 / Septin 5 antibody IHC of human brain, cerebellum. Immunohistochemistry of formalin-fixed, paraffin-embedded tissue after heat-induced antigen retrieval. Antibody concentration 20 ug/ml.