

Datasheet for ABIN364385
anti-STX2 antibody (AA 1-19)

2 Images

[Go to Product page](#)

Overview

Quantity:	50 µg
Target:	STX2
Binding Specificity:	AA 1-19
Reactivity:	Human, Mouse, Rat, Rabbit, Cow, Pig, Monkey, Chicken, Drosophila melanogaster, Hamster, Sheep, Xenopus laevis, Insect
Host:	Rabbit
Clonality:	Polyclonal
Application:	Western Blotting (WB), Immunohistochemistry (IHC), Immunoprecipitation (IP), Immunohistochemistry (Paraffin-embedded Sections) (IHC (p))

Product Details

Brand:	IHC-plus™
Immunogen:	Rat syntaxin 2 synthetic peptide, corresponding to amino acid residues 1-19, conjugated to KLH. Type of Immunogen: Synthetic peptide - KLH conjugated
Specificity:	Detects an ~35 kD protein, corresponding to the apparent molecular mass of syntaxin 2 on SDS-PAGE immunoblots, in samples from human, mouse, rat, bovine, canine, chicken, Drosophila, hamster, insect, monkey, pig, rabbit, sheep and Xenopus origins. The antibody specificity has been confirmed by specific peptide inhibition in immunoblotting studies.
Purification:	Immunoaffinity purified

Target Details

Target:	STX2
Alternative Name:	STX2 / Syntaxin 2 (STX2 Products)
Background:	Name/Gene ID: STX2 Family: Syntaxin/epimorphin Synonyms: STX2, Epimorphin, EPM, EPIM, STX2B, Syntaxin-2, Stx2A, STX2C, Syntaxin 2
Gene ID:	2054
UniProt:	P32856

Application Details

Application Notes:	Approved: IHC, IHC-P (10 µg/mL), IP (10 µg/mL), WB (1 µg/mL) Usage: Immunohistochemistry: This antibody was validated for use in immunohistochemistry on a panel of 21 formalin-fixed, paraffin-embedded (FFPE) human tissues after heat induced antigen retrieval in pH 6.0 citrate buffer. After incubation with the primary antibody, slides were incubated with biotinylated secondary antibody, followed by alkaline phosphatase-streptavidin and chromogen. The stained slides were evaluated by a pathologist to confirm staining specificity. The optimal working concentration for this antibody was determined to be 10 µg/mL.
Comment:	Target Species of Antibody: Rat
Restrictions:	For Research Use only

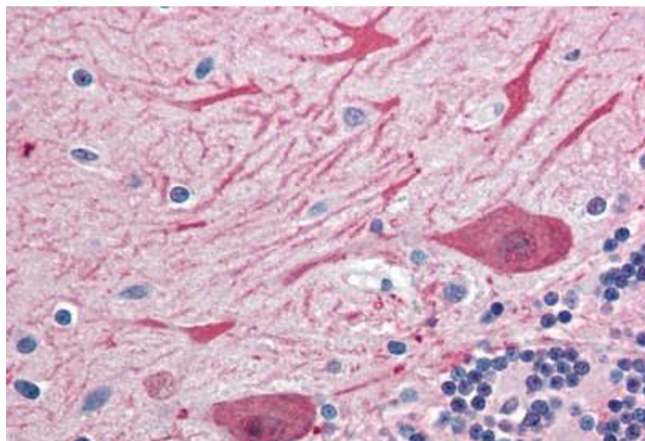
Handling

Format:	Liquid
Concentration:	Lot specific
Buffer:	PBS, pH 7.2, 0.09 % sodium azide, 50 % glycerol.
Preservative:	Sodium azide
Precaution of Use:	This product contains Sodium azide: a POISONOUS AND HAZARDOUS SUBSTANCE which should be handled by trained staff only.
Handling Advice:	Avoid freeze-thaw cycles.
Storage:	-20 °C

Handling

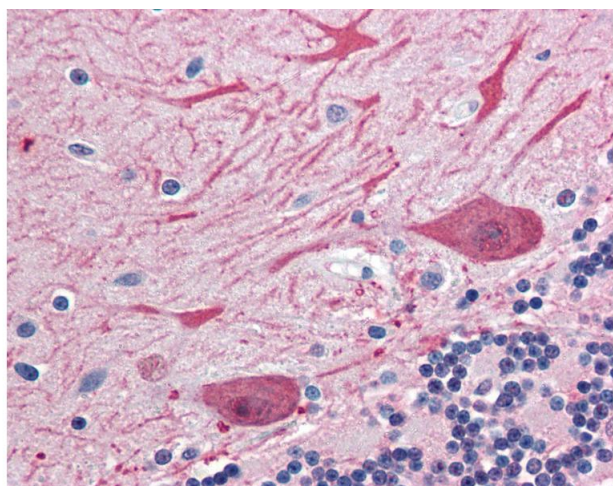
Storage Comment: Short term: -20°C
Long term: -20°C.

Images



Immunohistochemistry (Paraffin-embedded Sections)

Image 1. Human Brain, Cerebellum (formalin-fixed, paraffin-embedded) stained with STX2 antibody ABIN364385 at 10 ug/ml followed by biotinylated goat anti-rabbit IgG secondary antibody ABIN481713, alkaline phosphatase-streptavidin and chromogen.



Immunohistochemistry

Image 2. Anti-STX2 / Syntaxin 2 antibody IHC of human brain, cerebellum. Immunohistochemistry of formalin-fixed, paraffin-embedded tissue after heat-induced antigen retrieval. Antibody concentration 10 ug/ml.