

Datasheet for ABIN364396

anti-EPH Receptor A2 antibody (AA 559-976)[Go to Product page](#)**3** Images

Overview

Quantity:	50 µg
Target:	EPH Receptor A2 (EPHA2)
Binding Specificity:	AA 559-976
Reactivity:	Human, Mouse
Host:	Mouse
Clonality:	Monoclonal
Application:	Western Blotting (WB), ELISA, Immunohistochemistry (IHC), Immunohistochemistry (Paraffin-embedded Sections) (IHC (p))

Product Details

Brand:	IHC-plus™
Immunogen:	Recombinant human EphA2 (559-976aa) purified from E. coli. NCBI Accession No.: NP_004422. Type of Immunogen: Recombinant protein
Clone:	3D7
Isotype:	IgG2b kappa
Purification:	Protein G purified

Target Details

Target:	EPH Receptor A2 (EPHA2)
Alternative Name:	EPHA2 / EPH Receptor A2 (EPHA2 Products)

Target Details

Background:	Name/Gene ID: EPHA2
	Subfamily: Ephrin Receptor
	Family: Protein Kinase
	Synonyms: EPHA2, CTPA, EPH receptor A2, Ephrin type-A receptor 2, Epithelial cell kinase, ECK, Sek-2, ARCC2, Soluble EPHA2 variant 1, CTPP1
Gene ID:	1969
NCBI Accession:	NP_004422
UniProt:	P29317
Pathways:	RTK Signaling

Application Details

Application Notes:	Approved: ELISA, IHC, IHC-P (5 µg/mL), WB (1:500 - 1:2000)
	Usage: Immunohistochemistry: This antibody was validated for use in immunohistochemistry on a panel of 21 formalin-fixed, paraffin-embedded (FFPE) human tissues after heat induced antigen retrieval in pH 6.0 citrate buffer. After incubation with the primary antibody, slides were incubated with biotinylated secondary antibody, followed by alkaline phosphatase-streptavidin and chromogen. The stained slides were evaluated by a pathologist to confirm staining specificity. The optimal working concentration for this antibody was determined to be 5 µg/mL.
Comment:	Target Species of Antibody: Human
Restrictions:	For Research Use only

Handling

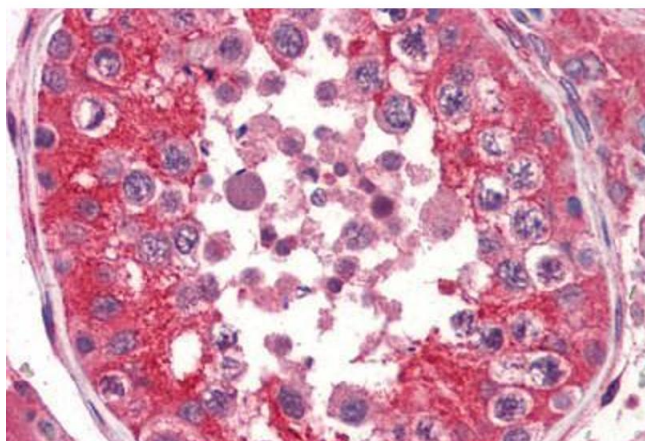
Format:	Liquid
Concentration:	Lot specific
Buffer:	PBS, pH 7.4, 0.1 % sodium azide. Sourced in Ascites.
Preservative:	Sodium azide
Precaution of Use:	This product contains Sodium azide: a POISONOUS AND HAZARDOUS SUBSTANCE which should be handled by trained staff only.
Handling Advice:	Avoid freeze-thaw cycles.

Handling

Storage: 4 °C, -20 °C

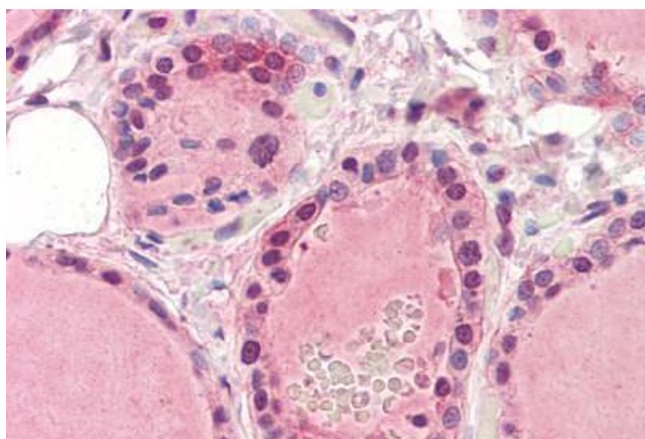
Storage Comment: Short term: 4°C. Long term: Store at -20°C. Avoid freeze-thaw cycles.

Images



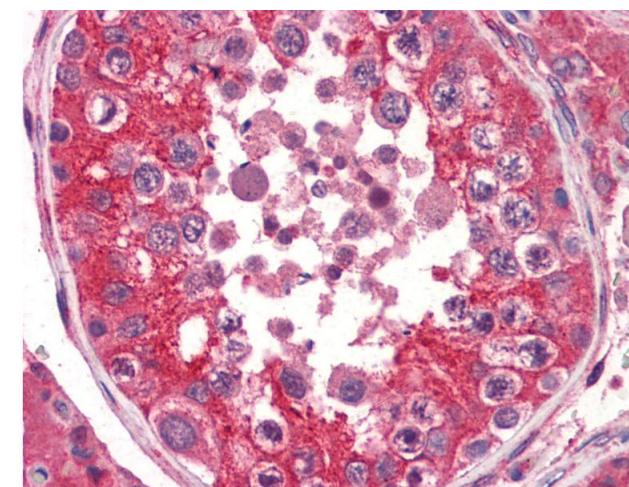
Immunohistochemistry (Paraffin-embedded Sections)

Image 1. Human Testis (formalin-fixed, paraffin-embedded) stained with EPHA2 antibody ABIN364396 at 5 ug/ml followed by biotinylated anti-mouse IgG secondary antibody ABIN481714, alkaline phosphatase-streptavidin and chromogen.



Immunohistochemistry (Paraffin-embedded Sections)

Image 2. Human Thyroid (formalin-fixed, paraffin-embedded) stained with EPHA2 antibody ABIN364396 at 5 ug/ml followed by biotinylated anti-mouse IgG secondary antibody ABIN481714, alkaline phosphatase-streptavidin and chromogen.



Immunohistochemistry

Image 3. Anti-EPHA2 antibody IHC of human testis. Immunohistochemistry of formalin-fixed, paraffin-embedded tissue after heat-induced antigen retrieval. Antibody concentration 5 ug/ml.