

Datasheet for ABIN364397  
**anti-STEAP1 antibody (AA 1-70)**



[Go to Product page](#)

3 Images

## Overview

Quantity:	50 µg
Target:	STEAP1
Binding Specificity:	AA 1-70
Reactivity:	Human
Host:	Mouse
Clonality:	Monoclonal
Application:	Western Blotting (WB), ELISA, Immunohistochemistry (IHC), Immunohistochemistry (Paraffin-embedded Sections) (IHC (p)), Immunofluorescence (IF), Immunocytochemistry (ICC)

## Product Details

Brand:	IHC-plus™
Immunogen:	Recombinant human STEAP1 (1-70aa) purified from E. coli. NCBI Accession No: NP_036581. Type of Immunogen: Recombinant protein
Clone:	J2D2
Isotype:	IgG2b kappa
Purification:	Protein G purified

## Target Details

Target:	STEAP1
Alternative Name:	STEAP1 / STEAP ( <a href="#">STEAP1 Products</a> )

## Target Details

---

Background:	Name/Gene ID: STEAP1  Synonyms: STEAP1, Metalloreductase STEAP1, PRSS24, STEAP
Gene ID:	26872
NCBI Accession:	<a href="#">NP_036581</a>
UniProt:	<a href="#">Q9UHE8</a>
Pathways:	<a href="#">Transition Metal Ion Homeostasis</a>

## Application Details

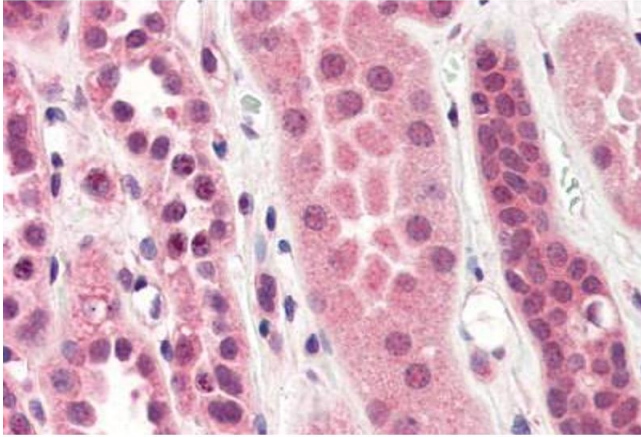
---

Application Notes:	Approved: ELISA, ICC, IF, IHC, IHC-P (10 µg/mL), WB (1:500 - 1:1000)  Usage: Immunohistochemistry: This antibody was validated for use in immunohistochemistry on a panel of 21 formalin-fixed, paraffin-embedded (FFPE) human tissues after heat induced antigen retrieval in pH 6.0 citrate buffer. After incubation with the primary antibody, slides were incubated with biotinylated secondary antibody, followed by alkaline phosphatase-streptavidin and chromogen. The stained slides were evaluated by a pathologist to confirm staining specificity. The optimal working concentration for this antibody was determined to be 10 µg/mL.
Comment:	Target Species of Antibody: Human
Restrictions:	For Research Use only

## Handling

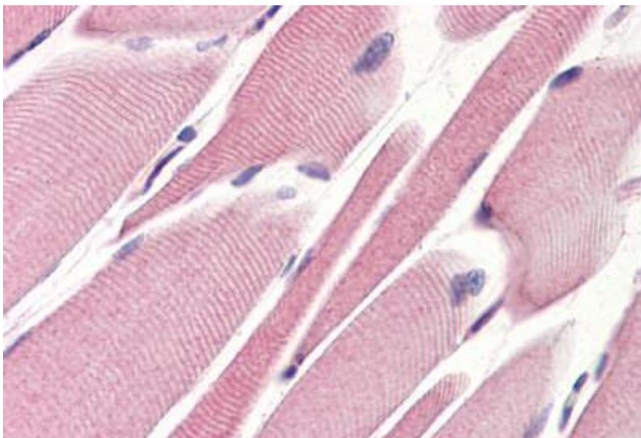
---

Format:	Liquid
Concentration:	Lot specific
Buffer:	PBS, pH 7.4, 0.1 % sodium azide. Sourced in Ascites.
Preservative:	Sodium azide
Precaution of Use:	This product contains Sodium azide: a POISONOUS AND HAZARDOUS SUBSTANCE which should be handled by trained staff only.
Handling Advice:	Avoid freeze-thaw cycles.
Storage:	4 °C, -20 °C



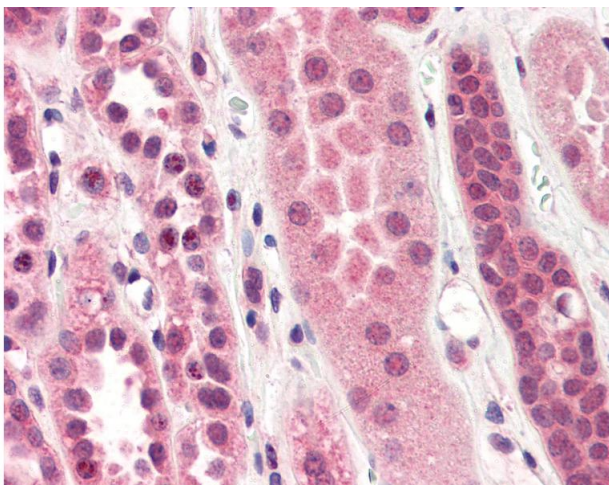
**Immunohistochemistry (Paraffin-embedded Sections)**

**Image 1.** Human Kidney (formalin-fixed, paraffin-embedded) stained with STEAP1 antibody ABIN364397 at 10 ug/ml followed by biotinylated anti-mouse IgG secondary antibody ABIN481714, alkaline phosphatase-streptavidin and chromogen.



**Immunohistochemistry (Paraffin-embedded Sections)**

**Image 2.** Human Skeletal Muscle (formalin-fixed, paraffin-embedded) stained with STEAP1 antibody ABIN364397 at 10 ug/ml followed by biotinylated anti-mouse IgG secondary antibody ABIN481714, alkaline phosphatase-streptavidin and chromogen.



**Immunohistochemistry**

**Image 3.** Anti-STEAP1 antibody IHC of human kidney. Immunohistochemistry of formalin-fixed, paraffin-embedded tissue after heat-induced antigen retrieval. Antibody concentration 10 ug/ml.