

Datasheet for ABIN364403
anti-GHRL antibody (AA 103-117)



[Go to Product page](#)

3 Images

Overview

Quantity:	50 µg
Target:	GHRL
Binding Specificity:	AA 103-117
Reactivity:	Human, Monkey
Host:	Goat
Clonality:	Polyclonal
Application:	ELISA, Immunohistochemistry (IHC), Immunohistochemistry (Paraffin-embedded Sections) (IHC (p))

Product Details

Brand:	IHC-plus™
Immunogen:	Synthetic peptide C-QDILWEEAKEAPADK from the C-terminus of human GHRL / Ghrelin (NP_057446.1, NP_001128413.1, NP_001128416.1, NP_001128417.1, NP_001128418.1). Percent identity by BLAST analysis: Human, Gibbon, Baboon, Monkey, Elephant (100%), Gorilla, Mouse, Hamster (93%), Marmoset, Rat, Pig (87%), Horse (80%). Type of Immunogen: Synthetic peptide
Specificity:	Human GHRL / Ghrelin. This antibody is expected to recognise all reported isoforms.
Predicted Reactivity:	Percent identity by BLAST analysis: Human, Gibbon, Baboon, Monkey, Elephant (100%) Gorilla, Mouse, Hamster (93%) Marmoset, Rat, Pig (87%) Horse (80%).
Purification:	Immunoaffinity purified

Target Details

Target:	GHRL
Alternative Name:	GHRL / Ghrelin Preproprotein (GHRL Products)
Background:	Name/Gene ID: GHRL Synonyms: GHRL, Ghrelin, Growth hormone secretagogue, Motilin-related peptide, Obestatin, Appetite-regulating hormone, MTLRP, Protein M46
Gene ID:	51738
NCBI Accession:	NP_057446 , NP_001128413 , NP_001128416 , NP_001128417 , NP_001128418
UniProt:	Q9UBU3

Application Details

Application Notes:	Approved: IHC, IHC-P (2 µg/mL), Peptide-ELISA (1:8000) Usage: Immunohistochemistry: This antibody was validated for use in immunohistochemistry on a panel of 21 formalin-fixed, paraffin-embedded (FFPE) human tissues after heat induced antigen retrieval in pH 6.0 citrate buffer. After incubation with the primary antibody, slides were incubated with biotinylated secondary antibody, followed by alkaline phosphatase-streptavidin and chromogen. The stained slides were evaluated by a pathologist to confirm staining specificity. The optimal working concentration for this antibody was determined to be 2 µg/mL.
Comment:	Target Species of Antibody: Human
Restrictions:	For Research Use only

Handling

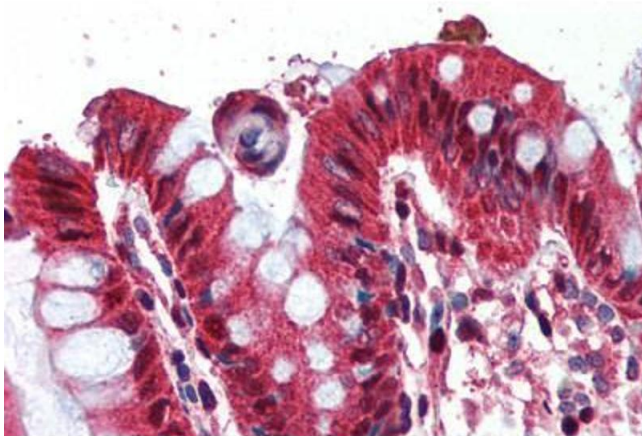
Format:	Liquid
Concentration:	Lot specific
Buffer:	Tris-buffered saline, pH 7.3, 0.5 % BSA, 0.02 % sodium azide
Preservative:	Sodium azide
Precaution of Use:	This product contains Sodium azide: a POISONOUS AND HAZARDOUS SUBSTANCE which should be handled by trained staff only.
Handling Advice:	Minimize freezing and thawing.

Handling

Storage: -20 °C

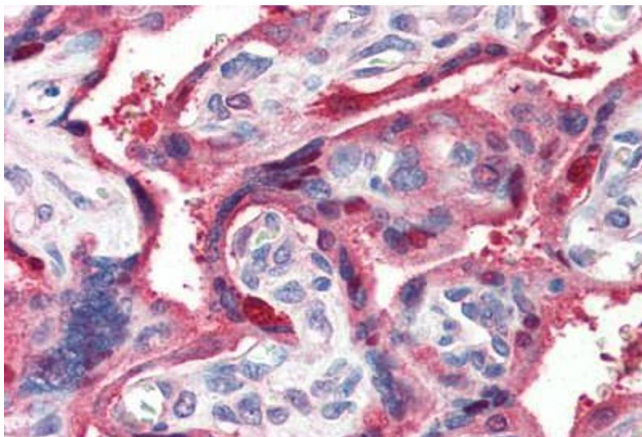
Storage Comment: Store at -20°C. Avoid freeze-thaw cycles.

Images



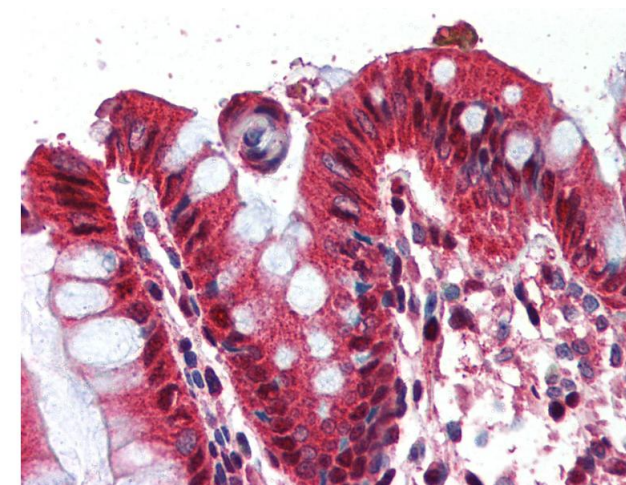
Immunohistochemistry (Paraffin-embedded Sections)

Image 1. Human Colon (formalin-fixed, paraffin-embedded) stained with GHRL antibody ABIN364403 at 2 ug/ml followed by biotinylated anti-goat IgG secondary antibody ABIN481715, alkaline phosphatase-streptavidin and chromogen.



Immunohistochemistry (Paraffin-embedded Sections)

Image 2. Human Placenta (formalin-fixed, paraffin-embedded) stained with GHRL antibody ABIN364403 at 2 ug/ml followed by biotinylated anti-goat IgG secondary antibody ABIN481715, alkaline phosphatase-streptavidin and chromogen.



Immunohistochemistry

Image 3. Anti-Ghrelin antibody IHC of human colon. Immunohistochemistry of formalin-fixed, paraffin-embedded tissue after heat-induced antigen retrieval. Antibody concentration 2 ug/ml.