

Datasheet for ABIN364408
anti-Catalase antibody (AA 498-511)



[Go to Product page](#)

3 Images

Overview

Quantity:	50 µg
Target:	Catalase (CAT)
Binding Specificity:	AA 498-511
Reactivity:	Human, Mouse, Dog, Horse, Monkey, Hamster, Bat
Host:	Goat
Clonality:	Polyclonal
Application:	Western Blotting (WB), Immunohistochemistry (IHC), ELISA, Immunohistochemistry (Paraffin-embedded Sections) (IHC (p))

Product Details

Brand:	IHC-plus™
Immunogen:	Synthetic peptide C-DKYNAEKPKNAIHT from an internal region of human CAT / Catalase (NP_001743.1). Percent identity by BLAST analysis: Human, Gorilla, Orangutan, Gibbon, Monkey, Marmoset, Mouse, Hamster, Panda, Bat, Dog, Horse (100%), Elephant, Pig, Guinea pig (93%), Sheep, Goat, Bovine (86%). Type of Immunogen: Synthetic peptide
Specificity:	Human CAT / Catalase.
Predicted Reactivity:	Percent identity by BLAST analysis: Human, Gorilla, Orangutan, Gibbon, Monkey, Marmoset, Mouse, Hamster, Panda, Bat, Dog, Horse (100%) Elephant, Pig, Guinea pig (93%) Sheep, Goat, Bovine (86%).

Product Details

Purification: Immunoaffinity purified

Target Details

Target: Catalase (CAT)

Alternative Name: CAT / Catalase ([CAT Products](#))

Background: Name/Gene ID: CAT

Synonyms: CAT, Catalase

Gene ID: 847

NCBI Accession: [NP_001743](#)

UniProt: [P04040](#)

Pathways: [Cellular Glucan Metabolic Process](#), [Cell RedoxHomeostasis](#), [Photoperiodism](#)

Application Details

Application Notes: Approved: IHC, IHC-P (2 µg/mL), Peptide-ELISA (1:32000), WB (0.3 - 1 µg/mL)

Usage: Immunohistochemistry: This antibody was validated for use in immunohistochemistry on a panel of 21 formalin-fixed, paraffin-embedded (FFPE) human tissues after heat induced antigen retrieval in pH 6.0 citrate buffer. After incubation with the primary antibody, slides were incubated with biotinylated secondary antibody, followed by alkaline phosphatase-streptavidin and chromogen. The stained slides were evaluated by a pathologist to confirm staining specificity. The optimal working concentration for this antibody was determined to be 2 µg/mL.

Comment: Target Species of Antibody: Human

Restrictions: For Research Use only

Handling

Format: Liquid

Concentration: Lot specific

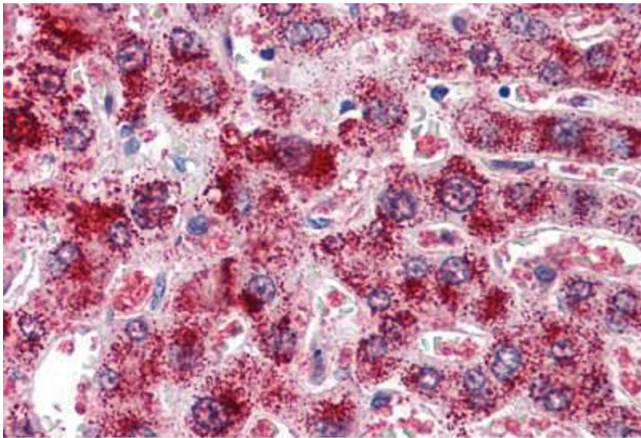
Buffer: Tris-buffered saline, pH 7.3, 0.5 % BSA, 0.02 % sodium azide

Preservative: Sodium azide

Handling

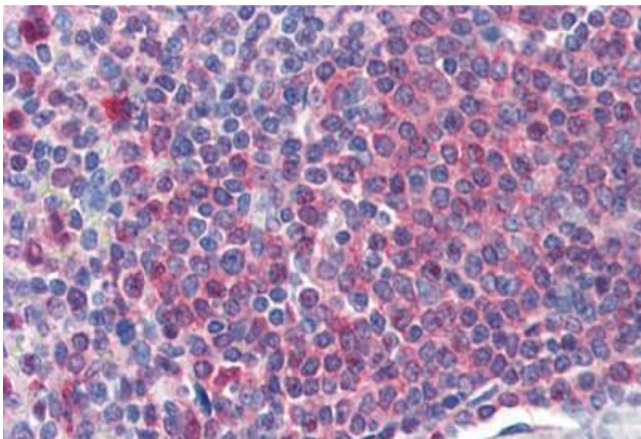
Precaution of Use:	This product contains Sodium azide: a POISONOUS AND HAZARDOUS SUBSTANCE which should be handled by trained staff only.
Handling Advice:	Minimize freezing and thawing.
Storage:	-20 °C
Storage Comment:	Store at -20°C. Avoid freeze-thaw cycles.

Images



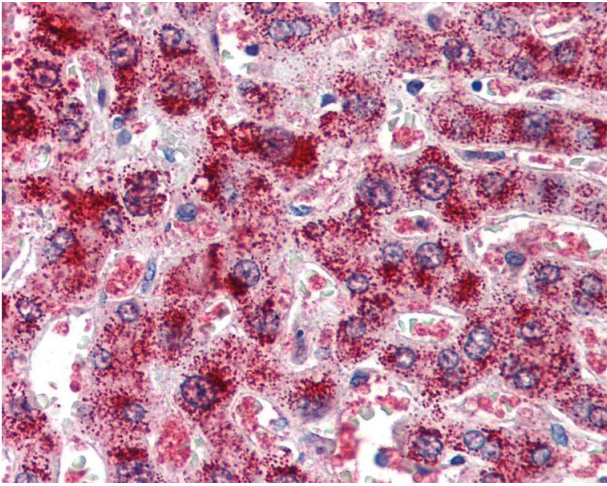
Immunohistochemistry (Paraffin-embedded Sections)

Image 1. Human Liver (formalin-fixed, paraffin-embedded) stained with CAT antibody ABIN364408 at 2 ug/ml followed by biotinylated anti-goat IgG secondary antibody ABIN481715, alkaline phosphatase-streptavidin and chromogen.



Immunohistochemistry (Paraffin-embedded Sections)

Image 2. Human Spleen (formalin-fixed, paraffin-embedded) stained with CAT antibody ABIN364408 at 2 ug/ml followed by biotinylated anti-goat IgG secondary antibody ABIN481715, alkaline phosphatase-streptavidin and chromogen.



Immunohistochemistry

Image 3. Anti-Catalase antibody IHC of human liver. Immunohistochemistry of formalin-fixed, paraffin-embedded tissue after heat-induced antigen retrieval. Antibody concentration 2 ug/ml.