

Datasheet for ABIN364438
anti-APOA1 antibody



[Go to Product page](#)

3 Images

Overview

| | |
|--------------|--|
| Quantity: | 50 µg |
| Target: | APOA1 |
| Reactivity: | Human |
| Host: | Mouse |
| Clonality: | Monoclonal |
| Conjugate: | This APOA1 antibody is un-conjugated |
| Application: | ELISA, Immunohistochemistry (IHC), Radioimmunoassay (RIA), Immunohistochemistry (Paraffin-embedded Sections) (IHC (p)) |

Product Details

| | |
|---------------|--|
| Brand: | IHC-plus™ |
| Immunogen: | Human high density lipoprotein. Type of Immunogen: Purified protein |
| Clone: | 057-10029 |
| Isotype: | IgG2a kappa |
| Specificity: | Recognizes Apolipoprotein A-I (Apo A-I). This antibody does not cross-react with Apo A-II or Apo B in competitive RIA. |
| Purification: | Protein A purified |

Target Details

| | |
|-------------------|--|
| Target: | APOA1 |
| Alternative Name: | APOA1 / Apolipoprotein A 1 (APOA1 Products) |
| Background: | Name/Gene ID: APOA1 Synonyms: APOA1, ApoA-I, APOAI, Apolipoprotein A-I, Apolipoprotein A1, Apo-AI |
| Gene ID: | 335 |
| UniProt: | P02647 |
| Pathways: | Regulation of Lipid Metabolism by PPARalpha , Production of Molecular Mediator of Immune Response , Lipid Metabolism |

Application Details

| | |
|--------------------|--|
| Application Notes: | Approved: ELISA, IHC, IHC-P (10 µg/mL), RIA Usage: Immunohistochemistry: This antibody was validated for use in immunohistochemistry on a panel of 21 formalin-fixed, paraffin-embedded (FFPE) human tissues after heat induced antigen retrieval in pH 6.0 citrate buffer. After incubation with the primary antibody, slides were incubated with biotinylated secondary antibody, followed by alkaline phosphatase-streptavidin and chromogen. The stained slides were evaluated by a pathologist to confirm staining specificity. The optimal working concentration for this antibody was determined to be 10 µg/mL. |
| Comment: | Target Species of Antibody: Human |
| Restrictions: | For Research Use only |

Handling

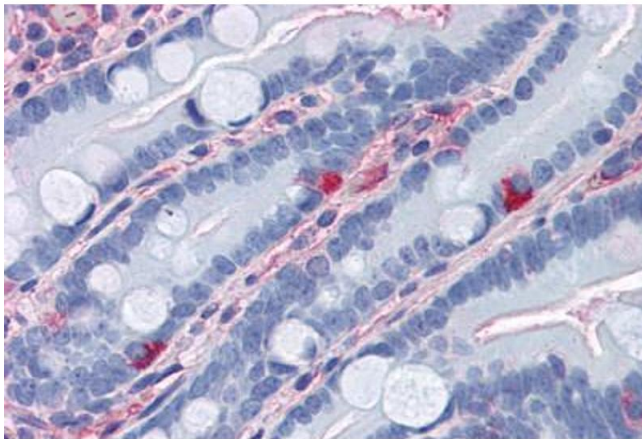
| | |
|--------------------|--|
| Format: | Liquid |
| Concentration: | Lot specific |
| Buffer: | PBS, 0.1 % sodium azide. |
| Preservative: | Sodium azide |
| Precaution of Use: | This product contains Sodium azide: a POISONOUS AND HAZARDOUS SUBSTANCE which should be handled by trained staff only. |
| Handling Advice: | Avoid repeated freezing and thawing. |

Handling

Storage: 4 °C, -20 °C

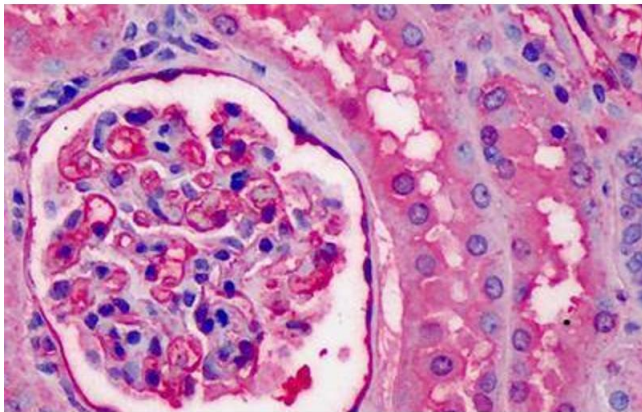
Storage Comment: 4°C or -20°C, Avoid freeze-thaw cycles.

Images



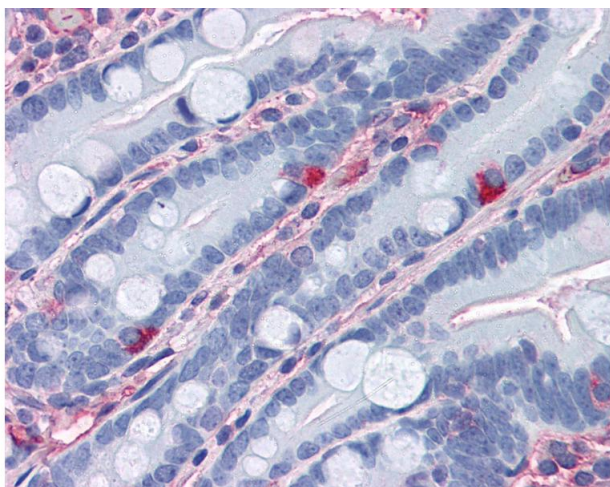
Immunohistochemistry (Paraffin-embedded Sections)

Image 1. Human Small Intestine (formalin-fixed, paraffin-embedded) stained with APOA1 antibody ABIN364438 at 10 ug/ml followed by biotinylated anti-mouse IgG secondary antibody ABIN481714, alkaline phosphatase-streptavidin and chromogen.



Immunohistochemistry (Formalin-fixed Paraffin-embedded Sections)

Image 2. Human Kidney: Formalin-Fixed, Paraffin-Embedded (FFPE)



Immunohistochemistry

Image 3. Anti-Apolipoprotein A I antibody IHC of human small intestine. Immunohistochemistry of formalin-fixed, paraffin-embedded tissue after heat-induced antigen retrieval. Antibody concentration 10 ug/ml.