

Datasheet for ABIN364443
anti-CRABP2 antibody (AA 1-138)[Go to Product page](#)

2 Images

Overview

Quantity:	50 µL
Target:	CRABP2
Binding Specificity:	AA 1-138
Reactivity:	Human
Host:	Mouse
Clonality:	Monoclonal
Conjugate:	This CRABP2 antibody is un-conjugated
Application:	Western Blotting (WB), ELISA, Immunohistochemistry (IHC), Immunohistochemistry (Paraffin-embedded Sections) (IHC (p))

Product Details

Brand:	IHC-plus™
Immunogen:	Recombinant human CRABP2 (1-138aa) purified from E. coli. Type of Immunogen: Recombinant protein
Clone:	AT2E11
Isotype:	IgG2a kappa
Purification:	Protein G purified

Target Details

Target:	CRABP2
---------	--------

Target Details

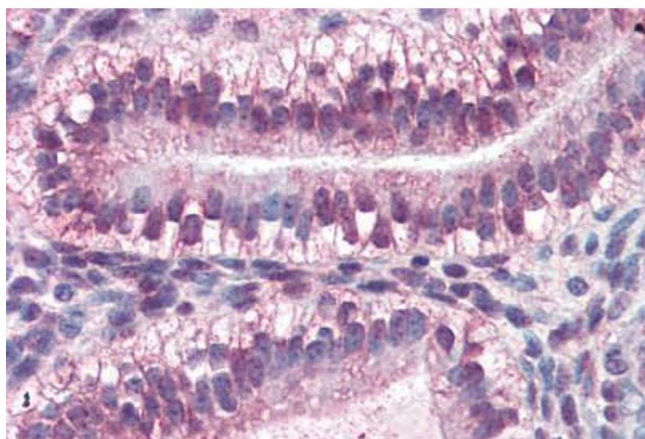
Alternative Name:	CRABP2 (CRABP2 Products)
Background:	Name/Gene ID: CRABP2
	Synonyms: CRABP2, CRABP-II, RBP6
Gene ID:	1382
UniProt:	P29373

Application Details

Application Notes:	Approved: ELISA, IHC, IHC-P (10 µg/mL), WB (1:250 - 1:1000)
	Usage: Immunohistochemistry: This antibody was validated for use in immunohistochemistry on a panel of 21 formalin-fixed, paraffin-embedded (FFPE) human tissues after heat induced antigen retrieval in pH 6.0 citrate buffer. After incubation with the primary antibody, slides were incubated with biotinylated secondary antibody, followed by alkaline phosphatase-streptavidin and chromogen. The stained slides were evaluated by a pathologist to confirm staining specificity. The optimal working concentration for this antibody was determined to be 10 µg/mL.
Comment:	Target Species of Antibody: Human
Restrictions:	For Research Use only

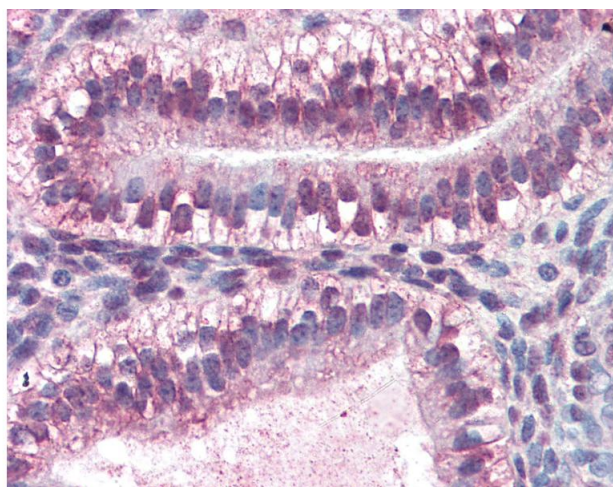
Handling

Format:	Liquid
Concentration:	Lot specific
Buffer:	PBS, pH 7.4, 0.1 % sodium azide. Sourced in Ascites.
Preservative:	Sodium azide
Precaution of Use:	This product contains Sodium azide: a POISONOUS AND HAZARDOUS SUBSTANCE which should be handled by trained staff only.
Handling Advice:	avoid freeze thaw cycles.
Storage:	4 °C,-20 °C
Storage Comment:	Short term 4°C, long term aliquot and store at -20°C, avoid freeze-thaw cycles.



Immunohistochemistry (Paraffin-embedded Sections)

Image 1. Human Uterus (formalin-fixed, paraffin-embedded) stained with CRABP2 antibody ABIN364443 at 10 ug/ml followed by biotinylated anti-mouse IgG secondary antibody ABIN481714, alkaline phosphatase-streptavidin and chromogen.



Immunohistochemistry

Image 2. Anti-CRABP2 antibody IHC of human uterus. Immunohistochemistry of formalin-fixed, paraffin-embedded tissue after heat-induced antigen retrieval. Antibody concentration 10 ug/ml.