



Datasheet for ABIN364458

## anti-Adenosine A2a Receptor antibody (AA 373-391)



[Go to Product page](#)

### 3 Images

#### Overview

Quantity:	50 µL
Target:	Adenosine A2a Receptor (ADORA2A)
Binding Specificity:	AA 373-391
Reactivity:	Human, Dog
Host:	Rabbit
Clonality:	Polyclonal
Conjugate:	This Adenosine A2a Receptor antibody is un-conjugated
Application:	Western Blotting (WB), Immunohistochemistry (IHC), Immunohistochemistry (Paraffin-embedded Sections) (IHC (p)), Immunoprecipitation (IP)

#### Product Details

Brand:	IHC-plus™
Immunogen:	Synthetic peptide: ESHGDMGLPDVELLSHELK, corresponding to amino acids 373-391 of Dog Adenosine Receptor A2a. Percent identity by BLAST analysis: Dog (100%), Gorilla, Marmoset, Panda (89%), Human, Horse (84%).  Type of Immunogen: Synthetic peptide
Isotype:	IgG
Specificity:	Detects adenosine receptor A2a. This antibody does not detect other AR subtypes. Species cross-reactivity: human. Not yet tested in other species.
Predicted Reactivity:	Percent identity by BLAST analysis: Dog (100%) Gorilla, Marmoset, Panda (89%) Human, Horse

## Product Details

---

(84%).

Purification: Immunoaffinity purified

## Target Details

---

Target: Adenosine A2a Receptor (ADORA2A)

Alternative Name: ADORA2A/Adenosine A2A Receptor ([ADORA2A Products](#))

Background: Name/Gene ID: ADORA2A

Subfamily: Adenosine

Family: GPCR

Synonyms: ADORA2A, Adenosine receptor A2a, ADORA2, A2a receptor, Adenosine A2a receptor, Adenosine A2 receptor, Adenosine receptor subtype A2a, HA2aR, RDC8

Gene ID: 135

UniProt: [P29274](#)

Pathways: [Neurotrophin Signaling Pathway](#), [cAMP Metabolic Process](#), [Synaptic Membrane](#), [Feeding Behaviour](#), [Cancer Immune Checkpoints](#)

## Application Details

---

Application Notes: Approved: IHC, IHC-P (1:50), IP, WB

Usage: Immunohistochemistry: This antibody was validated for use in immunohistochemistry on a panel of 21 formalin-fixed, paraffin-embedded (FFPE) human tissues after heat induced antigen retrieval in pH 6.0 citrate buffer. After incubation with the primary antibody, slides were incubated with biotinylated secondary antibody, followed by alkaline phosphatase-streptavidin and chromogen. The stained slides were evaluated by a pathologist to confirm staining specificity. The optimal working concentration for this antibody was determined to be 1:50. Western Blot: 1:1000 detects an ~45kD protein from canine striatum representing A2aAR. Immunohistochemistry (paraffin-embedded sections): 1:100. Staining of A2aAR in human hippocampus yields a pattern consistent with plasma membrane staining.

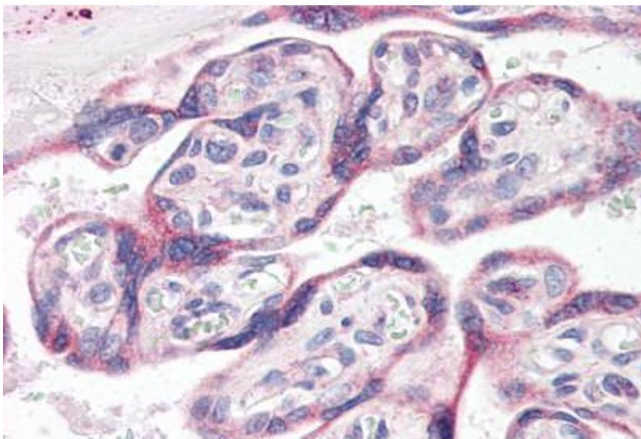
Comment: Target Species of Antibody: Dog

Restrictions: For Research Use only

## Handling

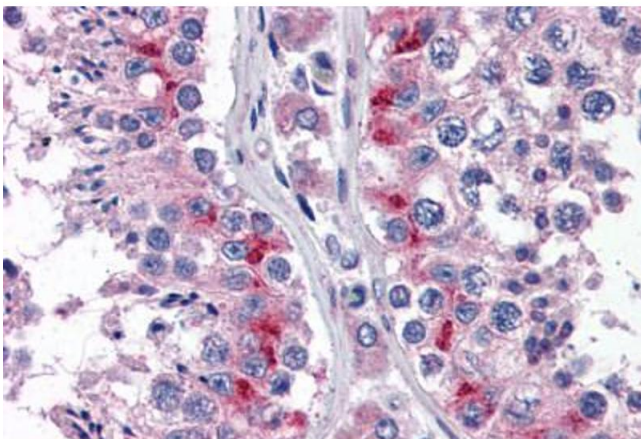
Format:	Liquid
Concentration:	Lot specific
Buffer:	PBS, 1 mg/mL BSA, 0.05 % sodium azide.
Preservative:	Sodium azide
Precaution of Use:	This product contains Sodium azide: a POISONOUS AND HAZARDOUS SUBSTANCE which should be handled by trained staff only.
Handling Advice:	Avoid repeated freezing and thawing.
Storage:	4 °C, -20 °C
Storage Comment:	4°C or -20°C, Avoid freeze-thaw cycles.

## Images



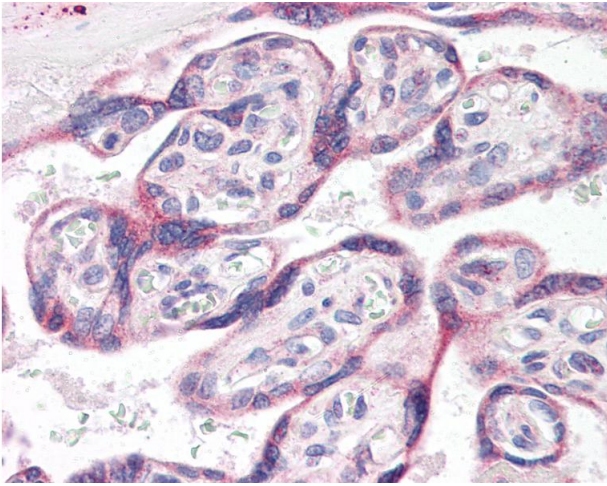
### Immunohistochemistry (Paraffin-embedded Sections)

**Image 1.** Human Placenta (formalin-fixed, paraffin-embedded) stained with ADORA2A antibody ABIN364458 at 1:50 followed by biotinylated goat anti-rabbit IgG secondary antibody ABIN481713, alkaline phosphatase-streptavidin and chromogen.



### Immunohistochemistry (Paraffin-embedded Sections)

**Image 2.** Human Testis (formalin-fixed, paraffin-embedded) stained with ADORA2A antibody ABIN364458 at 1:50 followed by biotinylated goat anti-rabbit IgG secondary antibody ABIN481713, alkaline phosphatase-streptavidin and chromogen.



### Immunohistochemistry

**Image 3.** Anti-ADORA2A antibody IHC of human placenta. Immunohistochemistry of formalin-fixed, paraffin-embedded tissue after heat-induced antigen retrieval. Antibody dilution 1:50.