



Datasheet for ABIN364459

anti-GRB2 antibody

3 Images



[Go to Product page](#)

Overview

Quantity:	50 µg
Target:	GRB2
Reactivity:	Human, Mouse, Rat, Cow, Hamster
Host:	Mouse
Clonality:	Monoclonal
Application:	Western Blotting (WB), Immunohistochemistry (IHC), Immunohistochemistry (Paraffin-embedded Sections) (IHC (p))

Product Details

Brand:	IHC-plus™
Immunogen:	Recombinant rat GRB2/Ash. Type of Immunogen: Recombinant protein
Isotype:	IgG1 kappa
Specificity:	Recognizes the N-terminal SH3 region of rat Grb2 at 23-25kD.
Purification:	Protein A purified

Target Details

Target:	GRB2
Alternative Name:	GRB2 (GRB2 Products)
Background:	Name/Gene ID: GRB2

Target Details

Synonyms: GRB2, Abundant SRC homology, Adapter protein GRB2, ASH, EGFRBP-GRB2, MST084, MSTP084, Protein Ash, SH2/SH3 adapter GRB2, Grb3-3, HT027, NCKAP2

Gene ID: 2885

UniProt: [P62993](#)

Pathways: [RTK Signaling](#), [TCR Signaling](#), [Fc-epsilon Receptor Signaling Pathway](#), [EGFR Signaling Pathway](#), [Neurotrophin Signaling Pathway](#), [Regulation of Actin Filament Polymerization](#), [Hepatitis C, Signaling Events mediated by VEGFR1 and VEGFR2](#), [Signaling of Hepatocyte Growth Factor Receptor](#), [EGFR Downregulation](#)

Application Details

Application Notes: Approved: IHC, IHC-P (5 µg/mL), WB (0.5 - 2 µg/mL)

Usage: Immunohistochemistry: This antibody was validated for use in immunohistochemistry on a panel of 21 formalin-fixed, paraffin-embedded (FFPE) human tissues after heat induced antigen retrieval in pH 6.0 citrate buffer. After incubation with the primary antibody, slides were incubated with biotinylated secondary antibody, followed by alkaline phosphatase-streptavidin and chromogen. The stained slides were evaluated by a pathologist to confirm staining specificity. The optimal working concentration for this antibody was determined to be 5 µg/mL. Western Blot: 0.5-2 mg/mL. Detects GRB2 (23-25kD) in RIPA lysates of non-stimulated human A431 carcinoma cells. Previous lots detected GRB2 in RIPA lysates of mouse 3T3 fibroblasts, rat L6 myoblasts, Chinese hamster ovary cells and bovine brain extract.

Comment: Target Species of Antibody: Rat

Restrictions: For Research Use only

Handling

Format: Liquid

Concentration: Lot specific

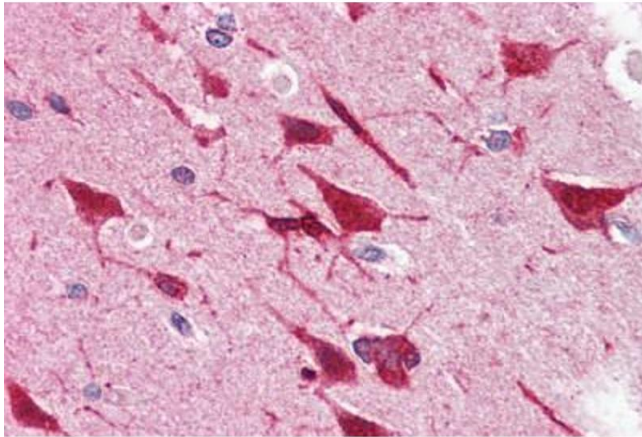
Buffer: PBS, 50 % glycerol.

Handling Advice: Avoid repeat freeze-thaw cycles.

Storage: 4 °C, -20 °C

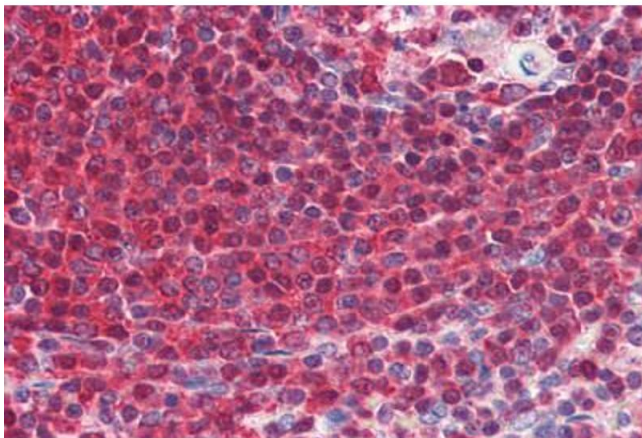
Storage Comment: Short term: 4°C. Long term: Store at -20°C. Avoid freeze-thaw cycles.

Validation report #029603 for ELISA (ELISA)



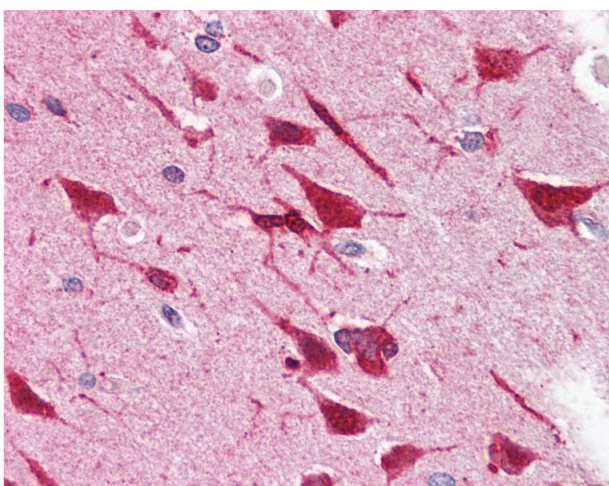
Immunohistochemistry (Paraffin-embedded Sections)

Image 1. Human Brain, Cortex (formalin-fixed, paraffin-embedded) stained with GRB2 antibody ABIN364459 at 5 ug/ml followed by biotinylated anti-mouse IgG secondary antibody ABIN481714, alkaline phosphatase-streptavidin and chromogen.



Immunohistochemistry (Paraffin-embedded Sections)

Image 2. Human Spleen (formalin-fixed, paraffin-embedded) stained with GRB2 antibody ABIN364459 at 5 ug/ml followed by biotinylated anti-mouse IgG secondary antibody ABIN481714, alkaline phosphatase-streptavidin and chromogen.



Immunohistochemistry

Image 3. Anti-GRB2 antibody IHC of human brain, cortex. Immunohistochemistry of formalin-fixed, paraffin-embedded tissue after heat-induced antigen retrieval. Antibody concentration 5 ug/ml.