

Datasheet for ABIN364478

**anti-SIM1 antibody****2** Images[Go to Product page](#)

## Overview

Quantity:	50 µg
Target:	SIM1
Reactivity:	Human, Cow, Monkey
Host:	Rabbit
Clonality:	Polyclonal
Application:	Immunohistochemistry (IHC), Immunohistochemistry (Paraffin-embedded Sections) (IHC (p)), Immunocytochemistry (ICC)

## Product Details

Brand:	IHC-plus™
Immunogen:	Synthetic peptide: (13aa) 423-435: ADRPGSQHDASCA. Percent identity by BLAST analysis: Human, Chimpanzee, Gorilla, Gibbon, Monkey, Marmoset, Bovine (100%), Orangutan, Rabbit, Pig (92%), Elephant, Panda, Bat, Dog, Horse (85%).  Type of Immunogen: Synthetic peptide
Specificity:	Recognizes Sim1. Species cross-reactivity: Human and rodent. MW: 85508.7D.
Predicted Reactivity:	Percent identity by BLAST analysis: Human, Chimpanzee, Gorilla, Gibbon, Monkey, Marmoset, Bovine (100%) Orangutan, Rabbit, Pig (92%) Elephant, Panda, Bat, Dog, Horse (85%).
Purification:	Immunoaffinity purified

## Target Details

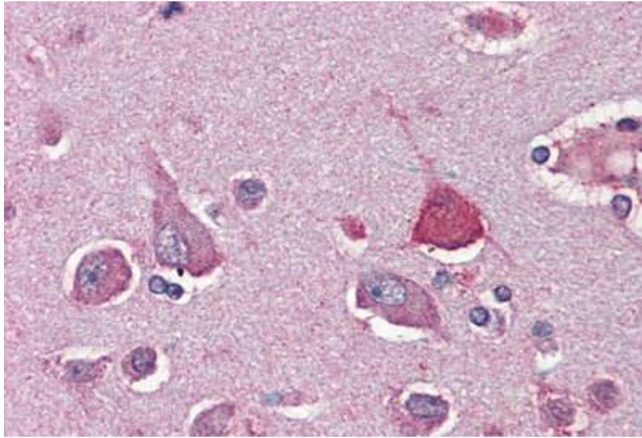
Target:	SIM1
Alternative Name:	SIM1 ( <a href="#">SIM1 Products</a> )
Background:	Name/Gene ID: SIM1  Synonyms: SIM1, BHLHe14, Single-minded homolog 1
Gene ID:	6492
UniProt:	<a href="#">P81133</a>

## Application Details

Application Notes:	Approved: ICC, IHC, IHC-P (5 µg/mL)  Usage: Immunohistochemistry: This antibody was validated for use in immunohistochemistry on a panel of 21 formalin-fixed, paraffin-embedded (FFPE) human tissues after heat induced antigen retrieval in pH 6.0 citrate buffer. After incubation with the primary antibody, slides were incubated with biotinylated secondary antibody, followed by alkaline phosphatase-streptavidin and chromogen. The stained slides were evaluated by a pathologist to confirm staining specificity. The optimal working concentration for this antibody was determined to be 5 µg/mL.
Comment:	Target Species of Antibody: Human
Restrictions:	For Research Use only

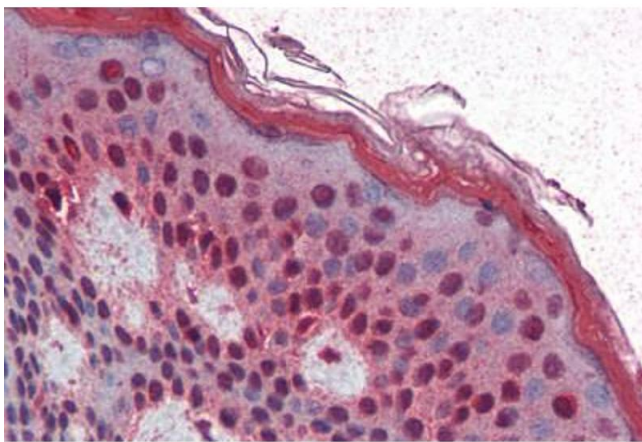
## Handling

Format:	Liquid
Concentration:	Lot specific
Buffer:	PBS, pH 7.2
Handling Advice:	Avoid repeat freeze-thaw cycles.
Storage:	4 °C,-20 °C
Storage Comment:	Short term: 4°C. Long term: Store at -20°C. Avoid freeze-thaw cycles.



#### Immunohistochemistry (Paraffin-embedded Sections)

**Image 1.** Human Brain, Cortex (formalin-fixed, paraffin-embedded) stained with SIM1 antibody ABIN364478 at 5 ug/ml followed by biotinylated goat anti-rabbit IgG secondary antibody ABIN481713, alkaline phosphatase-streptavidin and chromogen.



#### Immunohistochemistry (Paraffin-embedded Sections)

**Image 2.** Human Skin (formalin-fixed, paraffin-embedded) stained with SIM1 antibody ABIN364478 at 5 ug/ml followed by biotinylated goat anti-rabbit IgG secondary antibody ABIN481713, alkaline phosphatase-streptavidin and chromogen.