



Datasheet for ABIN364499  
**anti-ACPP antibody**



[Go to Product page](#)

2 Images

Overview

Quantity:	50 µg
Target:	ACPP
Reactivity:	Human
Host:	Mouse
Clonality:	Monoclonal
Application:	Immunohistochemistry (IHC), ELISA, Immunohistochemistry (Paraffin-embedded Sections) (IHC (p)), Immunoradiometric Assay (IRMA)

Product Details

Brand:	IHC-plus™
Immunogen:	Highly pure human PAP.
Isotype:	IgG1
Specificity:	PAP 100 %
Purification:	Protein A purified

Target Details

Target:	ACPP
Alternative Name:	ACPP / PAP ( <a href="#">ACPP Products</a> )
Background:	Name/Gene ID: ACPP

Synonyms: ACPP, ACP3, 5-NT, 5-nucleotidase, Acid phosphatase, prostate, ACP-3, Ecto-5-

## Target Details

---

nucleotidase, PAP, Prostatic acid phosphatase, Thiamine monophosphatase, Prostatic acid phosphatase, TMPase

Gene ID: 55

UniProt: [P15309](#)

Pathways: [Synaptic Membrane](#), [Ribonucleoside Biosynthetic Process](#)

## Application Details

---

Application Notes: Approved: ELISA, IHC, IHC-P (5 µg/mL), IRMA

Usage: Immunohistochemistry: This antibody was validated for use in immunohistochemistry on a panel of 21 formalin-fixed, paraffin-embedded (FFPE) human tissues after heat induced antigen retrieval in pH 6.0 citrate buffer. After incubation with the primary antibody, slides were incubated with biotinylated secondary antibody, followed by alkaline phosphatase-streptavidin and chromogen. The stained slides were evaluated by a pathologist to confirm staining specificity. The optimal working concentration for this antibody was determined to be 5 µg/mL. ELISA: Can be used as the capture antibody in a sandwich ELISA along with LS-C84714 as the detection antibody.

Comment: Target Species of Antibody: Human

Restrictions: For Research Use only

## Handling

---

Format: Liquid

Concentration: Lot specific

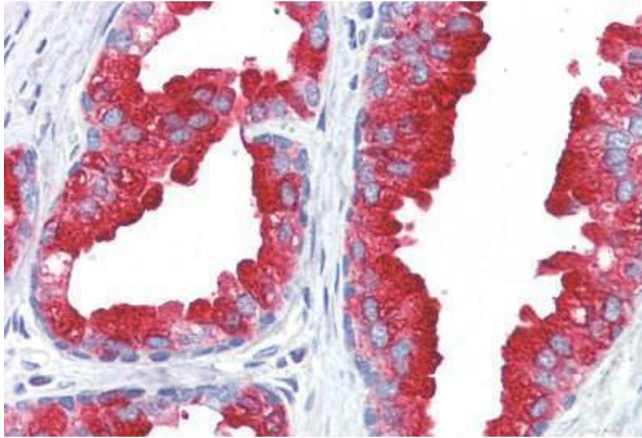
Buffer: PBS, pH 7.5 with 0.1 % Sodium azide

Preservative: Sodium azide

Precaution of Use: This product contains Sodium azide: a POISONOUS AND HAZARDOUS SUBSTANCE which should be handled by trained staff only.

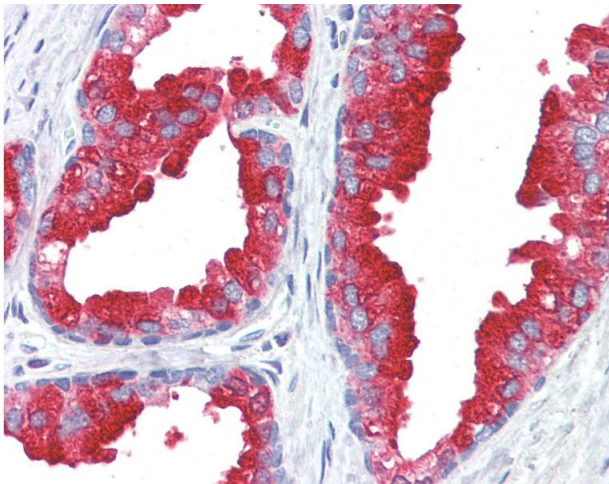
Storage: 4 °C

Storage Comment: Store at 4°C.



#### Immunohistochemistry (Paraffin-embedded Sections)

**Image 1.** Human Prostate (formalin-fixed, paraffin-embedded) stained with ACPP antibody ABIN364499 at 5 ug/ml followed by biotinylated anti-mouse IgG secondary antibody ABIN481714, alkaline phosphatase-streptavidin and chromogen.



#### Immunohistochemistry

**Image 2.** Anti-Prostatic Acid Phosphatase antibody IHC of human prostate. Immunohistochemistry of formalin-fixed, paraffin-embedded tissue after heat-induced antigen retrieval. Antibody concentration 5 ug/ml.