



[Go to Product page](#)

Datasheet for ABIN364556
anti-SNAP alpha/beta antibody

1 Image

Overview

Quantity:	100 µg
Target:	SNAP alpha/beta
Reactivity:	Human, Rat, Chicken, Cow
Host:	Mouse
Clonality:	Monoclonal
Application:	Western Blotting (WB), ELISA

Product Details

Isotype: IgG2b

Target Details

Target: SNAP alpha/beta
Abstract: [SNAP alpha/beta Products](#)

Application Details

Application Notes: Optimal working dilution should be determined by the investigator.
Comment: Target Species of Antibody: Human
Restrictions: For Research Use only

Handling

Format: Liquid

Handling

Concentration: Lot specific

Buffer: 20 mM sodium phosphate, 150 mM sodium chloride, 50 % glycerol, pH 7.5

Images

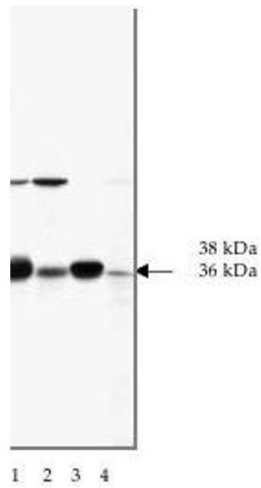


Image 1.