



[Go to Product page](#)

Datasheet for ABIN368865

phosphodiesterase 4B, cAMP-Specific (PDE4B) Peptide

2 Images

Overview

Quantity:	100 µg
Target:	PDE4B
Origin:	Human, Mouse, Rat
Source:	Synthetic
Application:	Blocking Peptide (BP), Immunogen (Imm)

Product Details

Sequence:	DIDIATEDKS PVDT
Characteristics:	The peptide was used in the production of ABIN368865 - Goat Anti-Phosphodiesterase 4B Antibody. It is currently untested in blocking applications.

Target Details

Target:	PDE4B
---------	-------

Application Details

Application Notes:	When peptides are reconstituted in 200ul water, the concentration would be also 0.5mg/ml. To start, the best ratio would be 1:1 (which means molar excess of peptides relative to antibodies when identical volumes are mixed). Please mix equal volumes of peptide and antibody at the required dilution and leave at ambient temperature. Best is to have two identical blots, to be incubated with equal amount of antibodies, but one with the antibodies pre-adsorbed to the peptide for 20min. Then incubate and develop in parallel the two blots.
--------------------	---

Restrictions:	For Research Use only
---------------	-----------------------

Handling

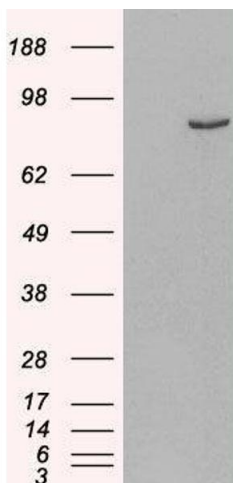
Format:	Lyophilized
Reconstitution:	Reconstitute pellet in distilled water where required. For Blocking studies, reconstitute pellet in 200µl distilled water to obtain a 0.5mg/ml peptide solution.
Buffer:	100µg of Lyophilised peptide, formulation De-ionized (DI) water.
Storage:	-20 °C
Storage Comment:	Shipped at ambient temperature, store at -20°C.

Images



Western Blotting

Image 1.



Western Blotting

Image 2.