

Datasheet for ABIN372198
anti-MDH1 antibody



[Go to Product page](#)

2 Images

Overview

Quantity:	50 µL
Target:	MDH1
Reactivity:	Human, Pig
Host:	Sheep
Clonality:	Polyclonal
Conjugate:	This MDH1 antibody is un-conjugated
Application:	Western Blotting (WB), Immunoprecipitation (IP), Enzyme Immunoassay (EIA), Immunohistochemistry (Paraffin-embedded Sections) (IHC (p))

Product Details

Immunogen:	Purified Malate Dehydrogenase from pig heart.
Isotype:	IgG
Specificity:	This antibody is specific to Malate Dehydrogenase, Cytoplasmic (MDH1).
Purification:	IgG Fractionation.

Target Details

Target:	MDH1
Alternative Name:	MDHA (MDH1 Products)
Background:	Malate dehydrogenase catalyzes the reversible oxidation of malate to oxaloacetate, utilizing the NAD/NADH cofactor system in the citric acid cycle. Malate dehydrogenase 1 (MDH1) is localized to the cytoplasm and may play pivotal roles in the malate-aspartate shuttle that

Target Details

	operates in the metabolic coordination between cytosol and mitochondria.Synonyms: MDH1, Malate dehydrogenase, cytoplasmic
Gene ID:	4190
NCBI Accession:	NP_001186040
UniProt:	P40925

Application Details

Application Notes:	Immunohistochemistry on Paraffin Sections: 5 µg/mL. Western Blot. Immunoprecipitation. ELISA. Other applications not tested. Optimal dilutions are dependent on conditions and should be determined by the user.
Restrictions:	For Research Use only

Handling

Format:	Liquid
Concentration:	10.0 mg/mL
Buffer:	0.02 M Potassium Phosphate, 0.15 M Sodium Chloride, pH 7.2, 0.01 % Sodium Azide as preservative.
Preservative:	Sodium azide
Precaution of Use:	This product contains sodium azide: a POISONOUS AND HAZARDOUS SUBSTANCE which should be handled by trained staff only.
Handling Advice:	Avoid repeated freezing and thawing.
Storage:	4 °C/-20 °C
Storage Comment:	Store the antibody undiluted at 2-8 °C for one month or (in aliquots) at -20 °C for longer.

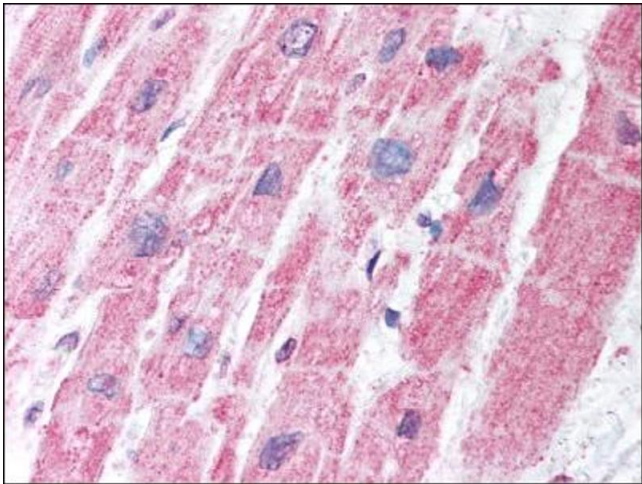


Image 1.

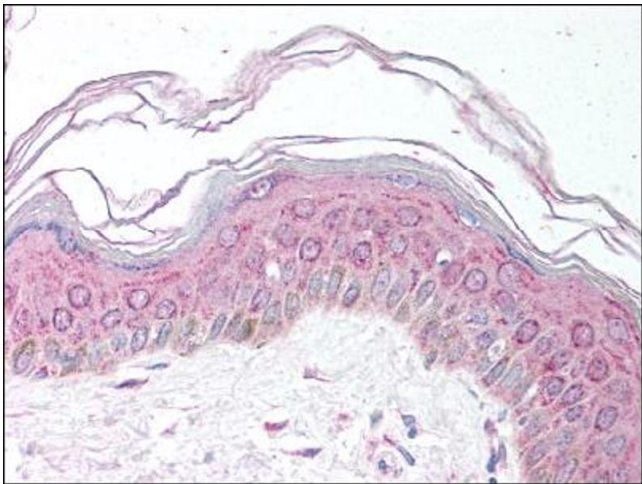


Image 2.