

Datasheet for ABIN372262

anti-FAM3C antibody (AA 40-80)[Go to Product page](#)**1** Image

Overview

Quantity:	50 µg
Target:	FAM3C
Binding Specificity:	AA 40-80
Reactivity:	Human, Rat, Mouse, Cow, Dog, Chicken, Chimpanzee, Opossum, Pufferfish
Host:	Rabbit
Clonality:	Polyclonal
Conjugate:	This FAM3C antibody is un-conjugated
Application:	Western Blotting (WB), Immunohistochemistry (Paraffin-embedded Sections) (IHC (p))

Product Details

Immunogen:	Synthetic peptide corresponding to a portion of the amino acids 40-80 of human FAM3C.
Isotype:	IgG
Specificity:	This antibody recognizes FAM3C.
Cross-Reactivity (Details):	Species reactivity (expected):Bovine, Chimpanzee, Chicken, Dog (Canine), Monkey, Mouse, Opossum, Pufferfish and Rat. Species reactivity (tested):Human.
Purification:	Immunoaffinity Chromatography.

Target Details

Target:	FAM3C
---------	-------

Target Details

Alternative Name:	FAM3C (FAM3C Products)
Background:	FAM3C is a secreted protein with a GG domain. A change in expression of this protein has been noted in pancreatic cancer-derived cells. This gene is a member of the family with sequence similarity 3 (FAM3) family and encodes a secreted protein with a GG domain. A change in expression of this protein has been noted in pancreatic cancer-derived cells. Alternate transcriptional splice variants which encode the same protein have been characterized. Synonyms: GS3786, ILEI, Interleukin-like EMT inducer
Gene ID:	10447
NCBI Accession:	NP_001035109
UniProt:	Q92520

Application Details

Application Notes:	Immunohistochemistry on Paraffin Sections: 5-10 µg/mL. Western Blot: 0.5-1.0 µg/mL. Other applications not tested. Optimal dilutions are dependent on conditions and should be determined by the user.
Restrictions:	For Research Use only

Handling

Concentration:	0.5 mg/mL
Buffer:	PBS containing 0.05 % Sodium Azide as preservative and 0.2 % Gelatin as stabilizer.
Preservative:	Sodium azide
Precaution of Use:	This product contains sodium azide: a POISONOUS AND HAZARDOUS SUBSTANCE which should be handled by trained staff only.
Handling Advice:	Avoid repeated freezing and thawing.
Storage:	4 °C/-20 °C
Storage Comment:	Store the antibody undiluted at 2-8 °C for one month or (in aliquots) at -20 °C for longer.

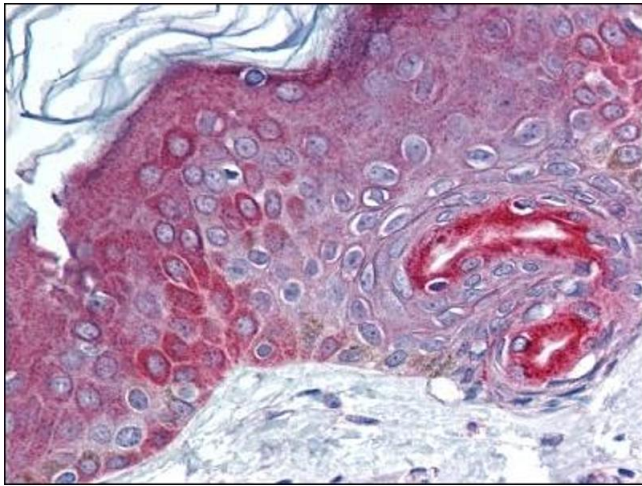


Image 1.