

Datasheet for ABIN372270  
**anti-PPP1R1A antibody (AA 50-100)**[Go to Product page](#)

## 1 Image

## Overview

Quantity:	50 µg
Target:	PPP1R1A
Binding Specificity:	AA 50-100
Reactivity:	Human, Rat, Mouse, Dog, Monkey, Cow, Xenopus laevis, Horse, Chimpanzee
Host:	Rabbit
Clonality:	Polyclonal
Conjugate:	This PPP1R1A antibody is un-conjugated
Application:	Western Blotting (WB), Immunohistochemistry (Paraffin-embedded Sections) (IHC (p))

## Product Details

Immunogen:	Synthetic peptide corresponding to a portion of the amino acids 50-100 of human IPP-1.
Isotype:	IgG
Specificity:	This antibody recognizes Protein Phosphatase-1 Inhibitor (PPP1R1A).
Cross-Reactivity (Details):	Species reactivity (expected):Bovine, Chimpanzee, Dog (Canine), Xenopus, Horse, Monkey, Mouse and Rat. Species reactivity (tested):Human.
Purification:	Immunoaffinity Chromatography.

## Target Details

Target:	PPP1R1A
---------	---------

## Target Details

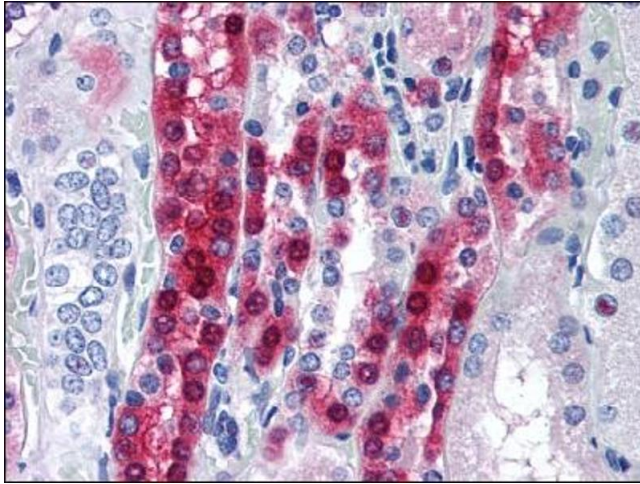
Alternative Name:	PPP1R1A ( <a href="#">PPP1R1A Products</a> )
Background:	Protein phosphatase inhibitor 1 (IPP1) may be important in hormonal control of glycogen metabolism. Hormones that elevate intracellular cAMP increase IPP1 activity in many tissues. IPP1 activation may impose cAMP control over proteins that are not directly phosphorylated by PKA. Following a rise in intracellular calcium, IPP1 is inactivated by calcineurin (or PP2B). Does not inhibit type-2 phosphatases.Synonyms: IPP-1, IPP1, Protein phosphatase 1 regulatory subunit 1A, Protein phosphatase inhibitor 1
Molecular Weight:	19 kDa
Gene ID:	5502
NCBI Accession:	<a href="#">NP_006732</a>
UniProt:	<a href="#">Q13522</a>
Pathways:	<a href="#">Cellular Glucan Metabolic Process</a>

## Application Details

Application Notes:	Immunohistochemistry on Paraffin Sections: 10 µg/mL. Western Blot: 0.5-2.0 µg/mL. Other applications not tested. Optimal dilutions are dependent on conditions and should be determined by the user.
Restrictions:	For Research Use only

## Handling

Concentration:	0.5 mg/mL
Buffer:	PBS containing 0.05 % Sodium Azide as preservative and 0.2 % Gelatin as stabilizer.
Preservative:	Sodium azide
Precaution of Use:	This product contains sodium azide: a POISONOUS AND HAZARDOUS SUBSTANCE which should be handled by trained staff only.
Handling Advice:	Avoid repeated freezing and thawing.
Storage:	4 °C/-20 °C
Storage Comment:	Store the antibody undiluted at 2-8 °C for one month or (in aliquots) at -20 °C for longer.



**Image 1.**