

Datasheet for ABIN372272

## anti-ARHGEF11 antibody (N-Term)



[Go to Product page](#)

### 1 Image

#### Overview

Quantity:	50 µg
Target:	ARHGEF11
Binding Specificity:	AA 1-50, N-Term
Reactivity:	Human, Rat, Mouse, Chicken, Cow, Dog, Horse, Monkey, Chimpanzee
Host:	Rabbit
Clonality:	Polyclonal
Conjugate:	This ARHGEF11 antibody is un-conjugated
Application:	Western Blotting (WB), Immunohistochemistry (Paraffin-embedded Sections) (IHC (p))

#### Product Details

Immunogen:	Synthetic peptide corresponding to a portion of the amino acids 1-50 of Human ARHGEF11.
Isotype:	IgG
Specificity:	This antibody recognizes Rho Guanine Exchange Factor (GEF) 11 (ARHGEF11).
Cross-Reactivity (Details):	Species reactivity (expected):Bovine, Chimpanzee, Chicken, Dog (Canine), Horse, Monkey, Mouse and Rat. Species reactivity (tested):Human.
Purification:	Immunoaffinity Chromatography.

#### Target Details

Target:	ARHGEF11
---------	----------

## Target Details

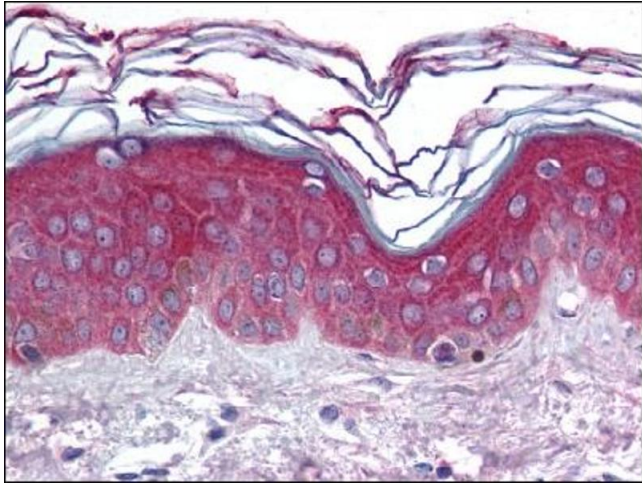
Alternative Name:	ARHGEF11 ( <a href="#">ARHGEF11 Products</a> )
Background:	ARHGEF11 (Rho guanine nucleotide exchange factor 11) acts as a guanine nucleotide exchange factor (GEF) for RhoA GTPase and may act as GTPase-activating protein (GAP) for GNA12 and GNA13. It exhibits transforming ability, associates with and modulates the actin cytoskeleton, regulates neurite outgrowth, and mediates activation of Rho in response to stimulation by activated Galpha12/13. Rat ARHGEF11 interacts with glutamate transporter EAAT4 and modulates its glutamate transport activity. ARHGEF11 is also thought to be involved in a pathway known to play a role in both insulin secretion and action.Synonyms: GTRAP48, KIAA0380, PDZ-RhoGEF, Rho guanine nucleotide exchange factor 11, RhoGEF glutamate transport modulator GTRAP48
Gene ID:	9826
NCBI Accession:	<a href="#">NP_055599</a>
UniProt:	<a href="#">O15085</a>
Pathways:	<a href="#">Neurotrophin Signaling Pathway</a> , <a href="#">Regulation of G-Protein Coupled Receptor Protein Signaling</a>

## Application Details

Application Notes:	Immunohistochemistry on Paraffin Sections: 10 µg/mL. Western Blot: 0.1-0.5 µg/mL. Other applications not tested. Optimal dilutions are dependent on conditions and should be determined by the user.
Restrictions:	For Research Use only

## Handling

Concentration:	0.5 mg/mL
Buffer:	PBS containing 0.05 % Sodium Azide as preservative and 0.2 % Gelatin as stabilizer.
Preservative:	Sodium azide
Precaution of Use:	This product contains sodium azide: a POISONOUS AND HAZARDOUS SUBSTANCE which should be handled by trained staff only.
Handling Advice:	Avoid repeated freezing and thawing.
Storage:	4 °C/-20 °C
Storage Comment:	Store the antibody undiluted at 2-8 °C for one month or (in aliquots) at -20 °C for longer.



**Image 1.**