

Datasheet for ABIN372659

**anti-Tamalin/GRASP antibody (C-Term)**[Go to Product page](#)**1** Image

## Overview

Quantity:	0.1 mL
Target:	Tamalin/GRASP (GRASP)
Binding Specificity:	C-Term
Reactivity:	Mouse, Rat, Human, Cow, Dog
Host:	Rabbit
Clonality:	Polyclonal
Conjugate:	This Tamalin/GRASP antibody is un-conjugated
Application:	Western Blotting (WB)

## Product Details

Immunogen:	Peptide corresponding to amino acid residues from the C-terminal region of rat GRASP, conjugated to keyhole limpet hemocyanin (KLH).
Isotype:	IgG
Specificity:	This antibody is specific for the ~95k GRASP protein.
Cross-Reactivity (Details):	Species reactivity (expected):Bovine, Canine, Human and Mouse. Species reactivity (tested):Rat.
Purification:	Affinity Chromatography.

## Target Details

Target:	Tamalin/GRASP (GRASP)
---------	-----------------------

## Target Details

Alternative Name:	GRASP ( <a href="#">GRASP Products</a> )
Background:	PDZ domain-containing proteins, such as PSD-95 and GRIP are thought to play key roles in glutamate receptor plasticity. GRIP-associated proteins (GRASPs) that bind to distinct PDZ domains within GRIP also play key roles in regulation of glutamate receptor function. GRASP-1 is a neuronal rasGEF associated with GRIP and AMPA receptors in vivo (Scannevin and Huganir, 2000). Recent work suggests that GRASP-1 may regulate neuronal ras signaling and contribute to the regulation of AMPA receptor distribution by NMDA receptor activity (Ye et al., 2000).Synonyms: GRP1-associated scaffold protein, General receptor for phosphoinositides 1-associated scaffold protein
Gene ID:	192254
NCBI Accession:	<a href="#">NP_620249</a>
UniProt:	<a href="#">Q8R4T5</a>

## Application Details

Application Notes:	Western blot: 1/1000. Other applications not tested. Optimal dilutions are dependent on conditions and should be determined by the user.
Restrictions:	For Research Use only

## Handling

Format:	Liquid
Buffer:	10 mM HEPES ( pH 7.5), 150 mM NaCl, 100 µg/mL BSA and 50 % Glycerol.
Handling Advice:	Avoid repeated freezing and thawing.
Storage:	-20 °C
Storage Comment:	Store the antibody undiluted (in aliquots) at -20 °C.

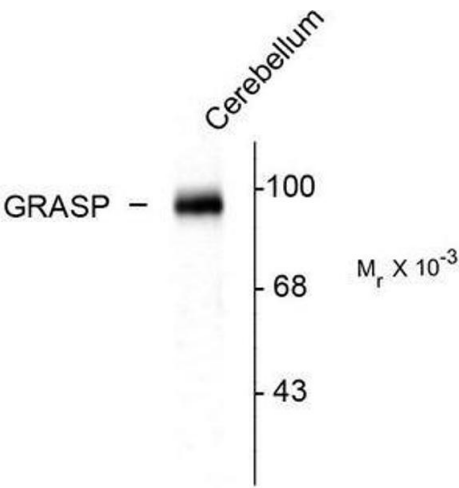


Image 1.