

Datasheet for ABIN372670
anti-GRM1a / GRM5 antibody (C-Term)



[Go to Product page](#)

1 Image

Overview

Quantity:	0.1 mL
Target:	GRM1a / GRM5 (GRM5/1a)
Binding Specificity:	C-Term
Reactivity:	Rat, Human, Mouse
Host:	Rabbit
Clonality:	Polyclonal
Conjugate:	This GRM1a / GRM5 antibody is un-conjugated
Application:	Western Blotting (WB), Immunohistochemistry (Frozen Sections) (IHC (fro))

Product Details

Immunogen:	Peptide from the C-terminal region of rat mGluR5 and rat mGluR1a.
Isotype:	IgG
Cross-Reactivity (Details):	Species reactivity (expected): Human and Mouse. Species reactivity (tested): Rat.
Purification:	Affinity Chromatography.

Target Details

Target:	GRM1a / GRM5 (GRM5/1a)
Alternative Name:	mGluR5/1a (GRM5/1a Products)
Background:	The metabotropic glutamate receptors (mGluRs) are key receptors in the modulation of

Target Details

excitatory synaptic transmission in the central nervous system. They are implicated in many forms of neural plasticity as well as learning and memory and drug abuse (Bhattacharya et al., 2004, Francesconi et al., 2004, Wilson and Nicoll, 2001). Group I metabotropic glutamate receptors (consisting of mGluR1 and mGluR5) are G-protein-coupled neurotransmitter receptors that are localized in the perisynaptic region of the postsynaptic membrane. When activated, Group I mGluRs lead to stimulation of phospholipase and activation of Protein Kinase C. In contrast, activation of Group II metabotropic receptors (mGluR2 and mGluR3) leads to inhibition of adenylate cyclase. The mGluR1 receptor may also be critically involved in limiting the deleterious effects of excitotoxicity (Blaabjerg et al., 2003). In contrast, the mGluR5 receptor appears to be essential for late phase LTP in area CA1 of the hippocampus (Francesconi et al., 2004). Synonyms: GRM1A, GRM5, MGLUR1a, MGLUR5, Metabotropic Glutamate Receptor 5/1a

Application Details

Application Notes: Western blot: 1/1000. Immunohistochemistry: 1/500.
Other applications not tested.
Optimal dilutions are dependent on conditions and should be determined by the user.

Restrictions: For Research Use only

Handling

Format: Liquid

Buffer: 10 mM HEPES (pH 7.5), 150 mM NaCl, 100 µg/mL BSA and 50 % Glycerol.

Handling Advice: Avoid repeated freezing and thawing.

Storage: -20 °C

Storage Comment: Store the antibody undiluted (in aliquots) at -20 °C.

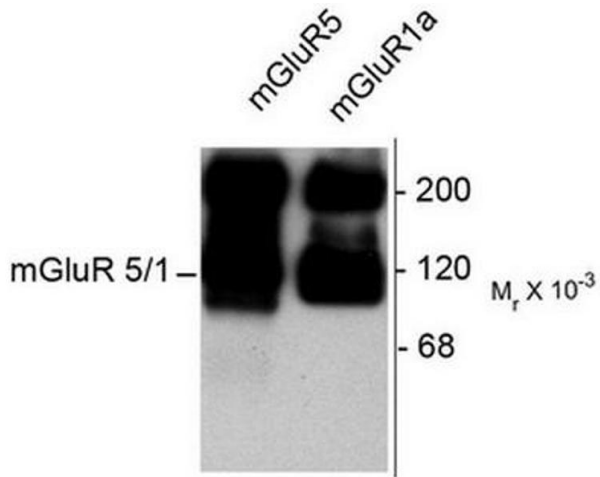


Image 1.