

Datasheet for ABIN372710
anti-RPH3A antibody (pSer234)



[Go to Product page](#)

2 Images

Overview

Quantity:	0.1 mL
Target:	RPH3A
Binding Specificity:	pSer234
Reactivity:	Mouse, Rat
Host:	Rabbit
Clonality:	Polyclonal
Conjugate:	This RPH3A antibody is un-conjugated
Application:	Western Blotting (WB), Immunohistochemistry (Frozen Sections) (IHC (fro))

Product Details

Immunogen:	Phosphopeptide corresponding to amino acid residues surrounding the phospho-Ser234 of Rabphilin 3A.
Isotype:	IgG
Specificity:	This antibody recognizes the ~82k Rabphilin protein phosphorylated at Ser234. The immunolabeling of the Rabphilin band was completely blocked by the phosphopeptide used as antigen while the dephosphopeptide had no effect on the immunolabeling.
Cross-Reactivity (Details):	Species reactivity (expected):Mouse. Species reactivity (tested):Rat.
Purification:	Sequential Chromatography on phospho- and dephosphopeptide affinity columns.

Target Details

Target:	RPH3A
Alternative Name:	Rabphilin-3A / RPH3A (RPH3A Products)
Background:	<p>Rabphilin-3A is a peripheral membrane protein that binds Ca²⁺ and phospholipids and is attached to synaptic vesicle membranes (Geppert et al., 1994, Li et al., 1994). The expression of rabphilin 3A is reduced in an animal model of Huntington's disease(Smith et al., 2005).</p> <p>Rabphilin can be phosphorylated at Ser234 by both CAM kinase II and PKA and this phosphorylation has been suggested to regulate neuronal activity during development in a synapse-specific manner (Fykse et al., 1995,Foletti and Scheller, 2001).Synonyms: Exophilin 1, Exophilin-1, KIAA0985, Rabphilin 3A</p>
Gene ID:	171039
NCBI Accession:	NP_598202
UniProt:	P47709
Pathways:	Synaptic Vesicle Exocytosis

Application Details

Application Notes:	<p>Western blot: 1/1,000. Immunohistochemistry: 1/400.</p> <p>Other applications not tested.</p> <p>Optimal dilutions are dependent on conditions and should be determined by the user.</p>
Restrictions:	For Research Use only

Handling

Format:	Liquid
Buffer:	10 mM HEPES (pH 7.5), 150 mM NaCl, 100 µg/mL BSA and 50 % Glycerol.
Handling Advice:	Avoid repeated freezing and thawing.
Storage:	-20 °C
Storage Comment:	Store the antibody undiluted (in aliquots) at-20 °C.

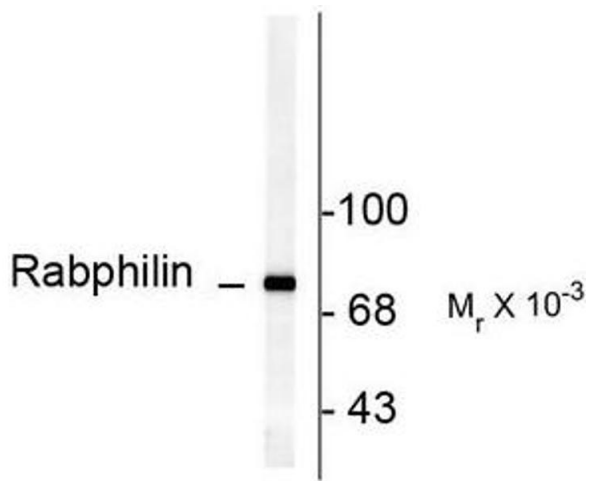


Image 1.

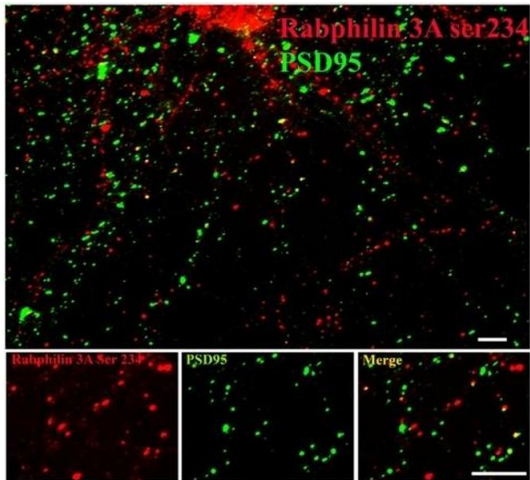


Image 2.