

Datasheet for ABIN372726

## anti-TAO Kinase 2 antibody (pSer181)



[Go to Product page](#)

### 1 Image

#### Overview

Quantity:	0.1 mL
Target:	TAO Kinase 2 (TAOK2)
Binding Specificity:	pSer181
Reactivity:	Human, Mouse, Rat, Dog, Xenopus laevis, Finch, Zebrafish (Danio rerio)
Host:	Rabbit
Clonality:	Polyclonal
Conjugate:	This TAO Kinase 2 antibody is un-conjugated
Application:	Western Blotting (WB)

#### Product Details

Immunogen:	Phosphopeptide corresponding to amino acid residues surrounding the phospho-Ser181 of TAO2.
Isotype:	IgG
Specificity:	Specific for the ~120k TAO2 phosphorylated at Ser181 in Western blots. Immunolabeling is completely eliminated by treatment with lambda-phosphatase.
Cross-Reactivity (Details):	Species reactivity (expected): Canine, Finch, Xenopus and Zebrafish. Species reactivity (tested): Human, Mouse and Rat.
Purification:	Affinity Chromatography via sequential chromatography on phospho- and dephosphopeptide affinity columns.

## Target Details

Target:	TAO Kinase 2 (TAOK2)
Abstract:	<a href="#">TAOK2 Products</a>
Background:	<p>In vitro, TAO (thousand and one amino acid) protein kinase 2 (TAO2) activates MAP/ERK kinases (MEKs) 3, 4, and 6 toward their substrates p38 MAP kinase JNK/SAPK (Chen et al., 1999, Chen and Cobb, 2001). This and more recent work has led to the proposal that the TAO protein kinases play an essential role in signaling from physiological agonists to the stress-responsive p38 MAPKs (Chen et al., 2003). Autophosphorylation of TAO may play a role in the mechanism of TAO activation. The MEK binding domain of TAO is autophosphorylated on both serine and threonine residues and Ser181 is located within this domain. Synonyms: KFC-C, KIAA0881, Kinase from chicken homolog C, MAP3K17, PSK-1, PSK1, Prostate-derived STE20-like kinase 1, Serine/threonine-protein kinase TAO2, Thousand and one amino acid protein 2, UNQ2971/PRO7431</p>
Gene ID:	9344
NCBI Accession:	<a href="#">NP_004774</a>
UniProt:	<a href="#">Q9UL54</a>
Pathways:	<a href="#">Cell-Cell Junction Organization</a>

## Application Details

Application Notes:	<p>Western blot: 1/1,000.</p> <p>Other applications not tested.</p> <p>Optimal dilutions are dependent on conditions and should be determined by the user.</p>
Restrictions:	For Research Use only

## Handling

Format:	Liquid
Buffer:	10 mM HEPES ( pH 7.5), 150 mM NaCl, 100 µg/mL BSA and 50 % Glycerol.
Handling Advice:	Avoid repeated freezing and thawing.
Storage:	-20 °C
Storage Comment:	Store the antibody undiluted (in aliquots) at -20 °C.

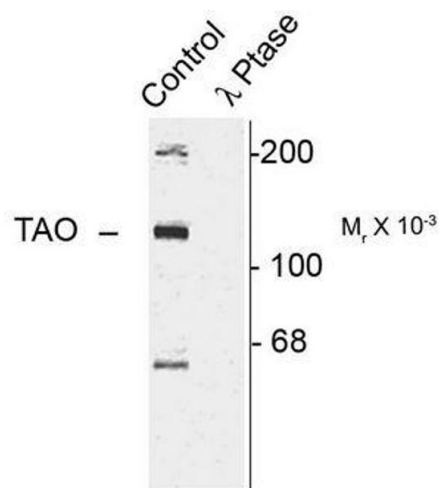


Image 1.