

Datasheet for ABIN372889

**anti-CAMK2A antibody (pThr286)****2** Images[Go to Product page](#)

## Overview

Quantity:	50 µL
Target:	CAMK2A
Binding Specificity:	pThr286
Reactivity:	Human, Mouse, Rat, Xenopus laevis
Host:	Rabbit
Clonality:	Polyclonal
Conjugate:	This CAMK2A antibody is un-conjugated
Application:	Western Blotting (WB), Immunohistochemistry (Paraffin-embedded Sections) (IHC (p))

## Product Details

Immunogen:	Phosphopeptide corresponding to amino acid residues surrounding the phosphoThr286 found in Rat brain CaM Kinase II.
Isotype:	IgG
Specificity:	This antibody recognizes Calcium/Calmodulin-dependent Protein Kinase Type II (CAMK2). Specific for the ~50k α-CaM Kinase II and the ~60k R-CaM Kinase II proteins phosphorylated at Thr286. Immunolabeling is blocked by the X-phosphatase treatment.
Cross-Reactivity (Details):	Species reactivity (expected): Human, Mouse, Xenopus. Species reactivity (tested): Rat.
Purification:	Immunoaffinity Chromatography

## Target Details

Target:	CAMK2A
Alternative Name:	CAMK2A ( <a href="#">CAMK2A Products</a> )
Background:	CaMKII (Calcium/calmodulin-dependent protein kinase II) is a ubiquitous serine/threonine protein kinase that is abundant in the brain as a major constituent of the postsynaptic density (PSD). The enzyme is an oligomeric protein composed of distinct but related subunits, alpha, beta, gamma, and delta, each encoded by a separate gene. CAMK2A assembles into heterooligomeric complexes with other CAMK2 subunits. CaMKII is a prominent kinase in the central nervous system that may function in long term potentiation and neurotransmitter release.Synonyms: CAMK2A, CAMK2B, CAMKA, CaM kinase II subunit alpha, CaM kinase II subunit beta, CaM-kinase II alpha chain, CaM-kinase II beta chain, CaMK-II subunit alpha, CaMK-II subunit beta, Calcium/Calmodulin-dependent Protein Kinase Type II, KIAA0968
Gene ID:	815
NCBI Accession:	<a href="#">NP_741960</a>
UniProt:	<a href="#">Q9UQM7</a>
Pathways:	<a href="#">WNT Signaling</a> , <a href="#">Interferon-gamma Pathway</a> , <a href="#">Myometrial Relaxation and Contraction</a>

## Application Details

Application Notes:	Immunohistochemistry on paraffin sections: 1/200. Western blot: 1/1000. Other applications not tested. Optimal dilutions are dependent on conditions and should be determined by the user.
Restrictions:	For Research Use only

## Handling

Format:	Liquid
Buffer:	10 mM HEPES ( pH 7.5), 150 mM NaCl, 100 µg/mL BSA and 50 % Glycerol
Handling Advice:	Avoid repeated freezing and thawing.
Storage:	4 °C/-20 °C
Storage Comment:	Store the antibody undiluted at 2-8 °C for one month or (in aliquots) at-20 °C for longer.

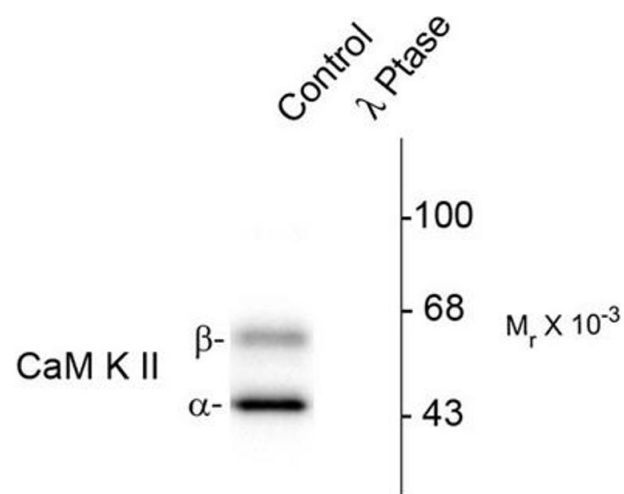


Image 1.

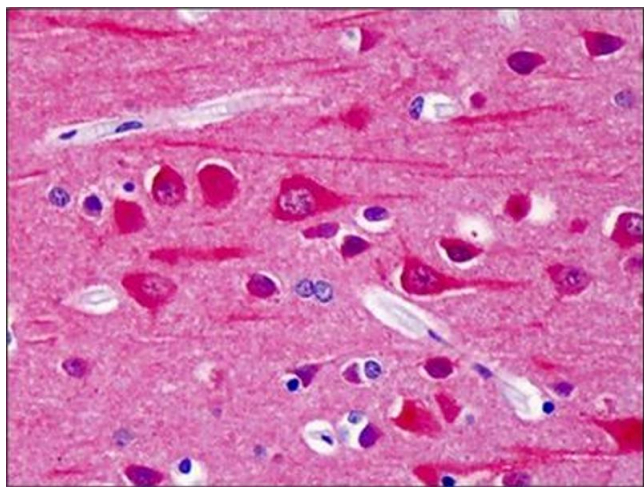


Image 2.