

Datasheet for ABIN372915
anti-KIF5A antibody (Center)[Go to Product page](#)

3 Images

Overview

Quantity:	50 µg
Target:	KIF5A
Binding Specificity:	Center
Reactivity:	Human, Mouse, Rat
Host:	Rabbit
Clonality:	Polyclonal
Conjugate:	This KIF5A antibody is un-conjugated
Application:	Western Blotting (WB), Immunofluorescence (IF), Immunohistochemistry (Paraffin-embedded Sections) (IHC (p)), Enzyme Immunoassay (EIA)

Product Details

Immunogen:	Synthetic peptide - KLH conjugated corresponding to 20 amino acids from near the center of Human KIF5.
Isotype:	IgG
Specificity:	This antibody reacts to Kinesin Family Member 5A (KIF5A).
Cross-Reactivity (Details):	Species reactivity (expected): Mouse and Rat. Species reactivity (tested): Human.
Purification:	Immunoaffinity Chromatography.

Target Details

Target:	KIF5A
---------	-------

Target Details

Alternative Name: KIF5A ([KIF5A Products](#))

Background: Kinesins are microtubule-based motor proteins involved in the transport of organelles in eukaryotic cells. They typically consist of 2 identical, approximately 110- to 120-kD heavy chains and 2 identical, approximately 60- to 70-kD light chains. Kinesin heavy chain isoform 5A is a neuron-specific member of the kinesin 5 (Kif5) family, consisting of the heavy chains of conventional kinesins. Mutation in human homolog causes autosomal dominant spastic paraplegia 10. Kinesins are a superfamily of microtubule-associated motor proteins involved in a variety of cellular processes including membranous organelle transport and cell division. Kinesin has been found in a variety of organisms and cell types and is subject to spatial and temporal regulation. These proteins have a modular structure including a conserved motor domain of approximately 350 amino acids, which is responsible for microtubule binding and ATP hydrolysis. In addition to the motor domain, subfamily members share common domain organization, exhibit sequence similarity, motility properties, and cellular functions outside of the motor domain. There are currently three known Kinesin 5 family members denoted as A, B, and C. Kinesin 5A and kinesin 5C appear to be exclusively neuronal, whereas kinesin 5B appears to be ubiquitous in its expression. Synonyms: KIF5A, Kinesin heavy chain isoform 5A, Kinesin heavy chain neuron-specific 1, NKHC, NKHC1, Neuronal kinesin heavy chain

Molecular Weight: 110 kDa

Gene ID: 3798

NCBI Accession: [NP_004975](#)

UniProt: [Q12840](#)

Application Details

Application Notes: ELISA. Western blot: 0.5-1.0 µg/mL. Immunocytochemistry. Immunohistochemistry on Paraffin Sections: 5 µg/mL.
Other applications not tested.
Optimal dilutions are dependent on conditions and should be determined by the user.

Restrictions: For Research Use only

Handling

Concentration: 1.0 mg/mL

Buffer: PBS containing 0.02 % Sodium Azide as preservative.

Handling

Preservative:	Sodium azide
Precaution of Use:	This product contains sodium azide: a POISONOUS AND HAZARDOUS SUBSTANCE which should be handled by trained staff only.
Handling Advice:	Avoid repeated freezing and thawing.
Storage:	4 °C/-20 °C
Storage Comment:	Store the antibody undiluted at 2-8 °C for one month or (in aliquots) at-20 °C for longer.

Images

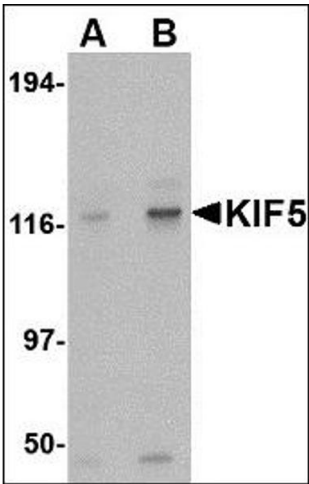


Image 1.

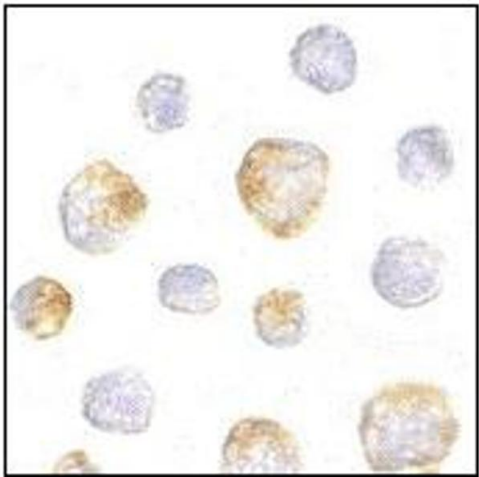


Image 2.

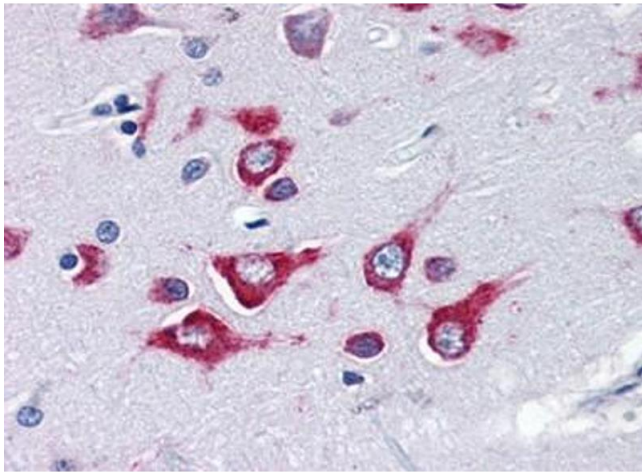


Image 3.