

Datasheet for ABIN372984
anti-LRRC7 antibody (N-Term)[Go to Product page](#)

1 Image

Overview

Quantity:	50 µg
Target:	LRRC7
Binding Specificity:	N-Term
Reactivity:	Human, Mouse, Rat
Host:	Rabbit
Clonality:	Polyclonal
Conjugate:	This LRRC7 antibody is un-conjugated
Application:	Western Blotting (WB), Immunohistochemistry (Paraffin-embedded Sections) (IHC (p)), Enzyme Immunoassay (EIA)

Product Details

Immunogen:	Synthetic peptide
Specificity:	This antibody reacts to Leucine Rich Repeat Containing 7 (LRRC7).
Cross-Reactivity (Details):	Species reactivity (expected):Mouse, Rat. Species reactivity (tested):Human.
Purification:	Immunoaffinity Chromatography

Target Details

Target:	LRRC7
Alternative Name:	LRRC7 (LRRC7 Products)

Target Details

Background:	The attachment of the lamins to the inner nuclear membrane appears to occur through their association with 4 related integral membrane proteins called Lamin Associated Polypeptides (LAPs). LAP 1A, 1B & 1C share a high degree of sequence homology while LAP 2 is distinct from the others. LAP1 is a brain specific protein that may be involved in the organization of synaptic cell-cell contacts. LAP1 interacts with CAMKII and CTNND2/Catenin delta-2 and forms a complex with N-cadherin through CTNND2. There are three named isoforms produced by alternative splicing. Synonyms: Densin-180, KIAA1365, LAP1, LRRC7, Leucine-rich repeat-containing protein 7
Gene ID:	57554
NCBI Accession:	NP_065845
UniProt:	Q96NW7
Pathways:	Synaptic Membrane

Application Details

Application Notes:	Immunohistochemistry on paraffin sections: 5 µg/mL. Western blot: 1 µg/mL. ELISA: 1 µg/mL. Other applications not tested. Optimal dilutions are dependent on conditions and should be determined by the user.
Restrictions:	For Research Use only

Handling

Buffer:	PBS, 0.01 % sodium azide, 50 % glycerol
Preservative:	Sodium azide
Precaution of Use:	This product contains sodium azide: a POISONOUS AND HAZARDOUS SUBSTANCE which should be handled by trained staff only.
Handling Advice:	Avoid repeated freezing and thawing.
Storage:	4 °C/-20 °C
Storage Comment:	Store the antibody undiluted at 2-8 °C for one month or (in aliquots) at -20 °C for longer.

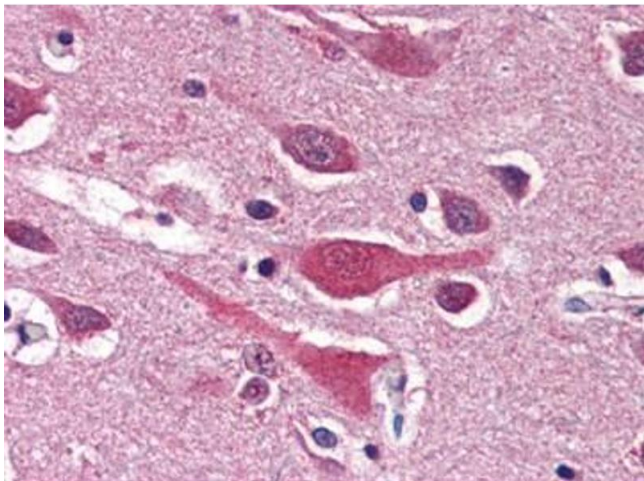


Image 1.