

Datasheet for ABIN375128

anti-CLEC16A antibody (C-Term)[Go to Product page](#)**1** Image

Overview

| | |
|----------------------|--|
| Quantity: | 0.1 mg |
| Target: | CLEC16A |
| Binding Specificity: | C-Term |
| Reactivity: | Human |
| Host: | Goat |
| Clonality: | Polyclonal |
| Conjugate: | This CLEC16A antibody is un-conjugated |
| Application: | Western Blotting (WB) |

Product Details

| | |
|-----------------------------|--|
| Immunogen: | Peptide with sequence from the C-Terminus of the protein sequence. |
| Sequence: | EEAACAEPVG TAED, |
| Specificity: | This antibody recognizes CLEC16A. |
| Cross-Reactivity (Details): | Species reactivity (tested):Human. |
| Purification: | Affinity Purified |

Target Details

| | |
|-------------------|---|
| Target: | CLEC16A |
| Alternative Name: | CLEC16A (CLEC16A Products) |
| Background: | CLEC16A is almost exclusively expressed in immune cells, including dendritic cells, B |

Target Details

| | |
|----------|--|
| | lymphocytes and natural killer cells. There are three isoforms.Synonyms: CLEC16A, KIAA0350 |
| Gene ID: | 23274, 9606 |
| UniProt: | Q2KHT3 |

Application Details

| | |
|--------------------|--|
| Application Notes: | Peptide ELISA: 1/1000. Western Blot: Use at 1-3 µg/mL. Approx.110 kDa band observed in Human Kidney and Liver lysates (calculated MW of110 kDa according to NP_056041.1). Other applications not tested. Optimal dilutions are dependent on conditions and should be determined by the user. |
| Restrictions: | For Research Use only |

Handling

| | |
|------------------|---|
| Concentration: | 0.5 mg/mL |
| Handling Advice: | Avoid repeated freezing and thawing. |
| Storage: | 4 °C/-20 °C |
| Storage Comment: | Store the antibody undiluted at 2-8 °C for one month or (in aliquots) at -20 °C for longer. |

Images

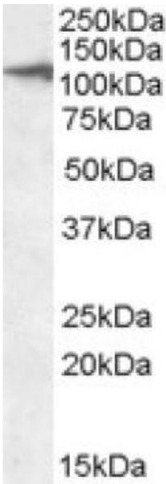


Image 1.