

Datasheet for ABIN375409

anti-Sca-1/Ly-6A/E antibody (APC)**1** Image**2** Publications[Go to Product page](#)

Overview

Quantity:	0.1 mg
Target:	Sca-1/Ly-6A/E (Ly6a)
Reactivity:	Mouse
Host:	Rat
Clonality:	Monoclonal
Conjugate:	This Sca-1/Ly-6A/E antibody is conjugated to APC
Application:	Flow Cytometry (FACS)

Product Details

Immunogen:	IL-2 dependent mouse (C57BL/6) cytotoxic T cell line CTL-L
Clone:	D7
Isotype:	IgG2a
Specificity:	Mouse Ly-6A/E (Ly-6A.2 & Ly-6E.1), Mr 18 kDa
Characteristics:	Rat Anti-Mouse Ly-6A/E-APC
Purification:	Purified

Target Details

Target:	Sca-1/Ly-6A/E (Ly6a)
Alternative Name:	Ly-6A/E (Ly6a Products)
Background:	Ly-6A/E, also known as Sca-1, is a member of the Ly-6 multigene family of type V

Target Details

glycophosphatidylinositol-anchored cell surface proteins. It is expressed on multipotent hematopoietic stem cells in bone marrow of mice with both the Ly-6.1 and Ly-6.2 allotypes. In the periphery, Ly-6A/E exhibits a pattern of expression which is based on differences between the two allotypes. Ly-6.1 strains (e.g., A, BALB/c, CBA, C3H/He, DBA/1, NZB) have few Ly-6A/E + resting peripheral lymphocytes, whereas Ly-6.2 strains (e.g., AKR, C57BL, C57BR, C57L, DBA/2, PL, SJL, SWR, 129) have relatively high numbers of Ly-6A/E + lymphocytes. The expression of Ly-6A/E is dramatically upregulated in all strains upon cellular activation.

Pathways: [Sensory Perception of Sound, Activated T Cell Proliferation](#)

Application Details

Application Notes:

- **Applications:** FC - Quality tested , IHC-FS - Reported in literature , IHC-PS - Reported in literature , IP - Reported in literature , WB - Reported in literature , Costim - Reported in literature
- **Working Dilutions:** Flow Cytometry FITC, BIOT, and AF488 conjugates 1 g/10⁶ cells PE, APC, SPRD, PE/CY5.5, PACBLU, and AF647 conjugates 0.2 g/10⁶ cells For flow cytometry, the suggested use of these reagents is in a final volume of 100 L

Comment: In vitro lymphocyte activation

Sample Volume: 1 mL

Restrictions: For Research Use only

Handling

Concentration: 0.1 mg/mL

Buffer: 0.1 mg in 1.0 mL of PBS/Sodium azide and a stabilizing agent

Preservative: Sodium azide

Precaution of Use: This product contains Sodium azide: a POISONOUS AND HAZARDOUS SUBSTANCE which should be handled by trained staff only.

Handling Advice: **Do not freeze!**
Protect conjugated products from light.
Each reagent is stable for the period shown on the bottle label if stored as directed.

Storage: 4 °C

Storage Comment: Store at 2-8°C

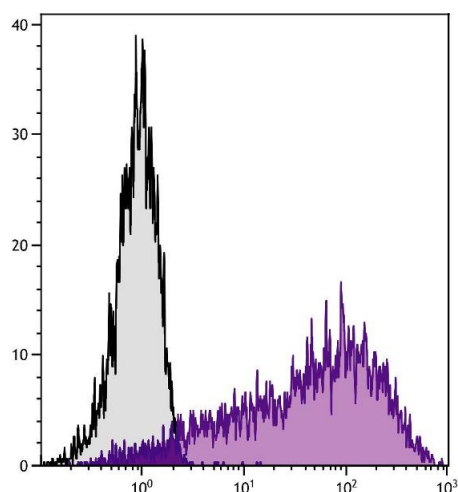
Publications

Product cited in: Guerriero, Palmieri, De Marco, Cossu, Remondelli, Capunzo, Turco, Rosati: "The anti-apoptotic BAG3 protein is involved in BRAF inhibitor resistance in melanoma cells." in: **Oncotarget**, Vol. 8, Issue 46, pp. 80393-80404, (2017) ([PubMed](#)).

Iorio, Festa, Rosati, Hahne, Tiberti, Capunzo, De Laurenzi, Turco: "BAG3 regulates formation of the SNARE complex and insulin secretion." in: **Cell death & disease**, Vol. 6, pp. e1684, (2015) ([PubMed](#)).

Aeckerle, Drummer, Debowski, Viebahn, Behr: "Primordial germ cell development in the marmoset monkey as revealed by pluripotency factor expression: suggestion of a novel model of embryonic germ cell translocation." in: **Molecular human reproduction**, Vol. 21, Issue 1, pp. 66-80, (2015) ([PubMed](#)).

Images



Flow Cytometry

Image 1. Con-A stimulated BALB/c mouse splenocytes were stained with Rat Anti-Mouse Ly-6A/E-APC.